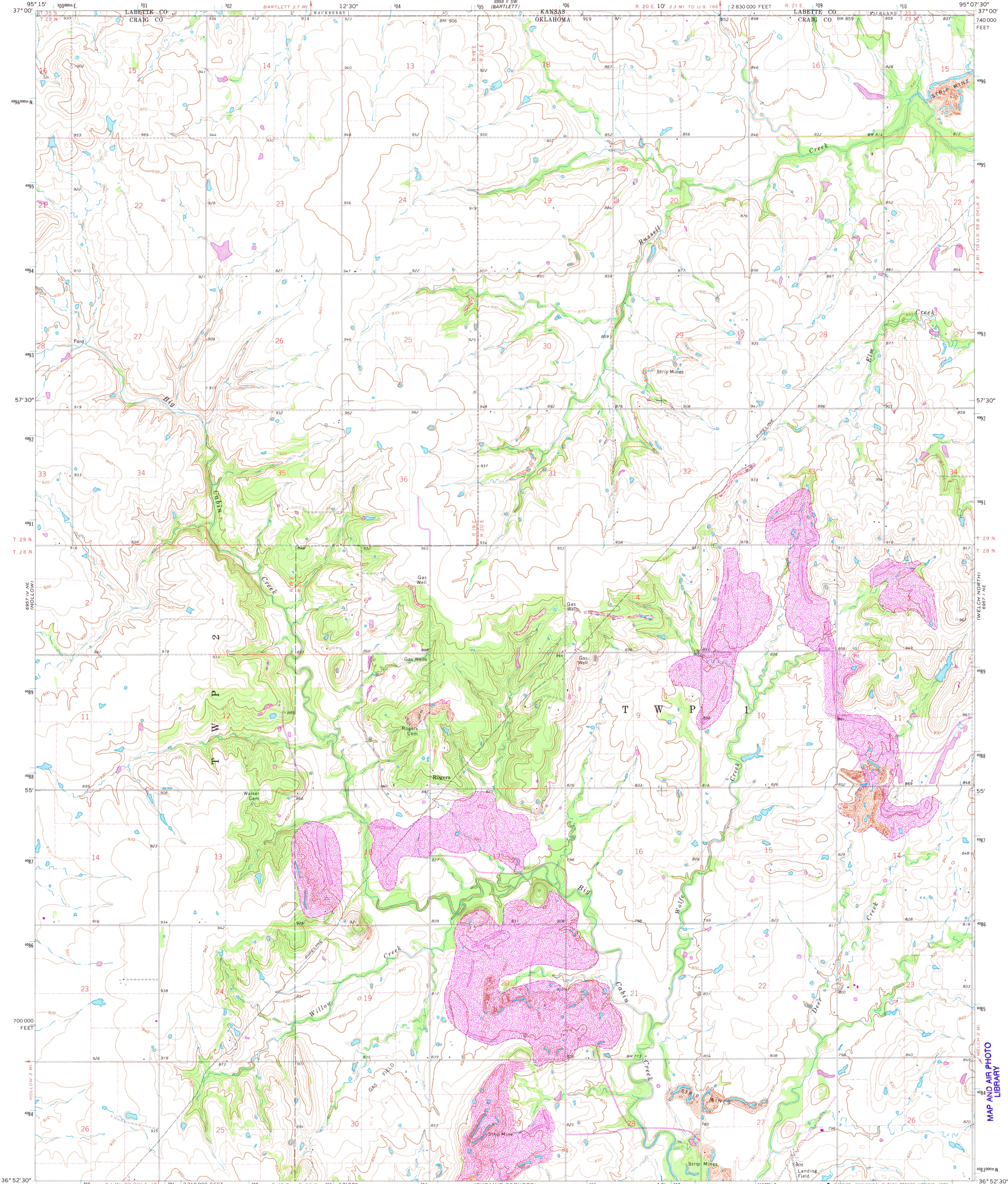
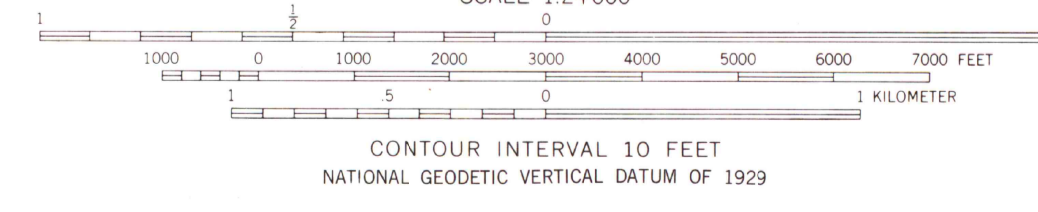
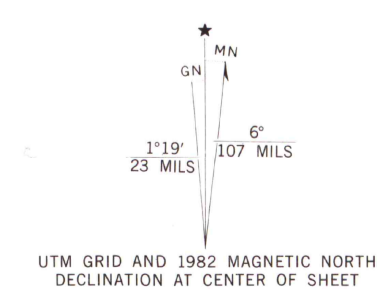


UNITED STATES
DEPARTMENT OF THE INTERIOR
GEOLOGICAL SURVEY

WELCH NW QUADRANGLE
OKLAHOMA-KANSAS
7.5 MINUTE SERIES (TOPOGRAPHIC)



Mapped, edited, and published by the Geological Survey
Control by USGS and USC&GS
Topography by photogrammetric methods from aerial photographs taken 1970. Field checked 1971.
Polyconic projection. 1927 North American datum 10,000-foot grid based on Oklahoma coordinate system, north zone 1000-meter Universal Transverse Mercator grid ticks, zone 15, shown in blue.
Fine red dashed lines indicate selected fence and field lines where generally visible on aerial photographs. This information is unchecked.
To place on the predicted North American Datum 1983 move the projection lines 3 meters south and 21 meters east as shown by dashed corner ticks



THIS MAP COMPLIES WITH NATIONAL MAP ACCURACY STANDARDS FOR SALE BY U. S. GEOLOGICAL SURVEY, DENVER, COLORADO 80225, OR RESTON, VIRGINIA 22092, AND STATE GEOLOGICAL SURVEY, LAWRENCE, KANSAS 66044. A FOLDER DESCRIBING TOPOGRAPHIC MAPS AND SYMBOLS IS AVAILABLE ON REQUEST.

ROAD CLASSIFICATION

Primary highway, hard surface	Light-duty road, hard or improved surface
Secondary highway, hard surface	Unimproved road
Interstate Route	U. S. Route
	State Route

QUADRANGLE LOCATION
Revisions shown in purple compiled from aerial photographs taken 1980 and other sources. Map edited 1982. This information not field checked.
Areas bounded by dashed purple lines and printed with disturbed surface pattern represent reclaimed mining areas.

WELCH NW, OKLA.-KANS.
N3652.5-W9507.5/7.5
1971
PHOTOREVISED 1982
DMA 6957 1 NW-SERIES V885

MAP AND AIR PHOTO LIBRARY
SEP 13 1982
University of Wisconsin
Madison