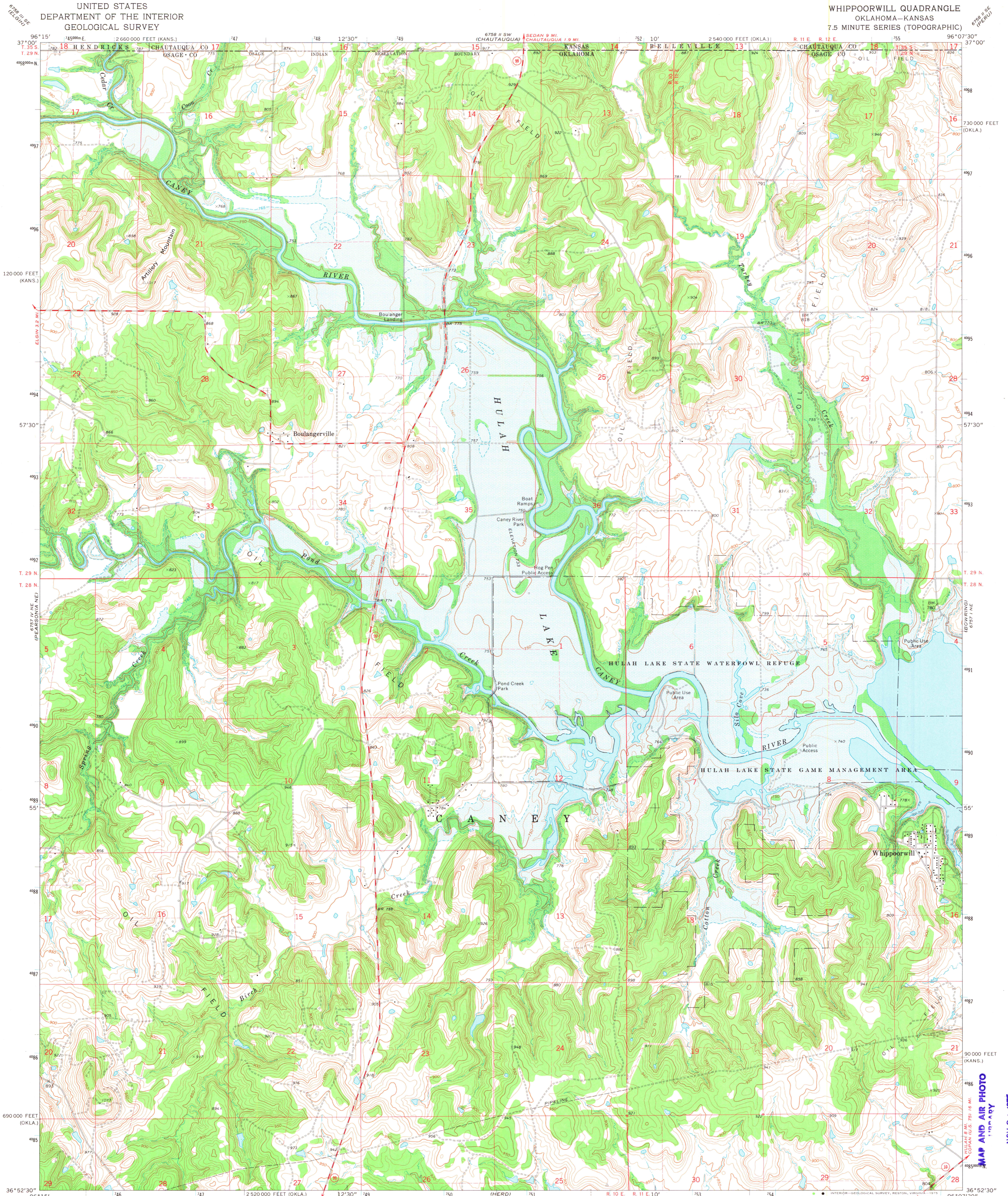
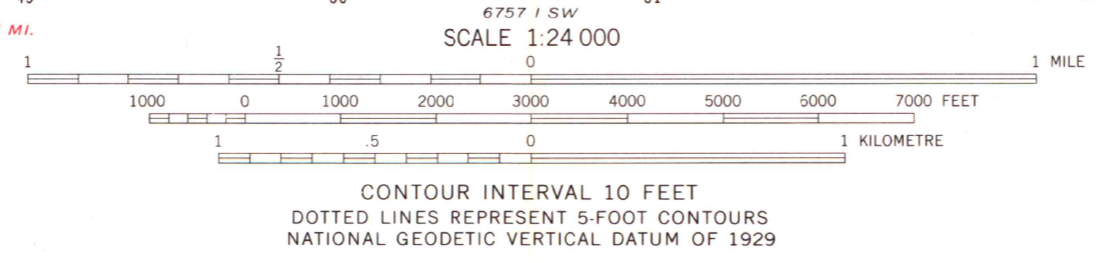
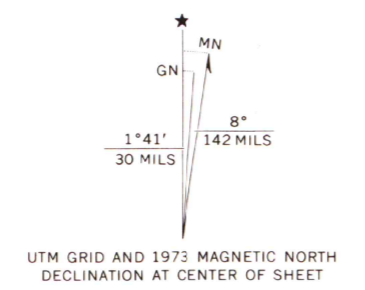


UNITED STATES  
DEPARTMENT OF THE INTERIOR  
GEOLOGICAL SURVEY

WHIPPOORWILL QUADRANGLE  
OKLAHOMA-KANSAS  
7.5 MINUTE SERIES (TOPOGRAPHIC)



Mapped, edited, and published by the Geological Survey  
Control by USGS and NOS/NOAA  
Topography by photogrammetric methods from aerial  
photographs taken 1972. Field checked 1973  
Projection: Oklahoma coordinate system, north zone  
(Lambert conformal conic)  
10,000-foot grid ticks based on Oklahoma coordinate  
system, north zone, and Kansas coordinate system, south zone  
100-metre Universal Transverse Mercator grid ticks,  
zone 14, shown in blue. 1927 North American datum  
Areas covered by dashed light-blue pattern  
are subject to controlled inundation  
Fine red dashed lines indicate selected fence and field lines where  
generally visible on aerial photographs. This information is unchecked



THIS MAP COMPLIES WITH NATIONAL MAP ACCURACY STANDARDS  
FOR SALE BY U. S. GEOLOGICAL SURVEY, DENVER, COLORADO 80225, OR RESTON, VIRGINIA 22092  
OKLAHOMA GEOLOGICAL SURVEY, NORMAN, OKLAHOMA 73069,  
AND STATE GEOLOGICAL SURVEY, LAWRENCE, KANSAS 66044  
A FOLDER DESCRIBING TOPOGRAPHIC MAPS AND SYMBOLS IS AVAILABLE ON REQUEST



ROAD CLASSIFICATION

Primary highway, hard surface	Light-duty road, hard or improved surface
Secondary highway, hard surface	Unimproved road
Interstate Route	U. S. Route
	State Route

WHIPPOORWILL, OKLA.—KANS.  
N 3652.5—W 9607.5/7.5  
1973  
AMS 6757 I NW—SERIES V883

MAP AND AIR PHOTO  
COPYRIGHT  
NOV 21 1975  
University of Wisconsin