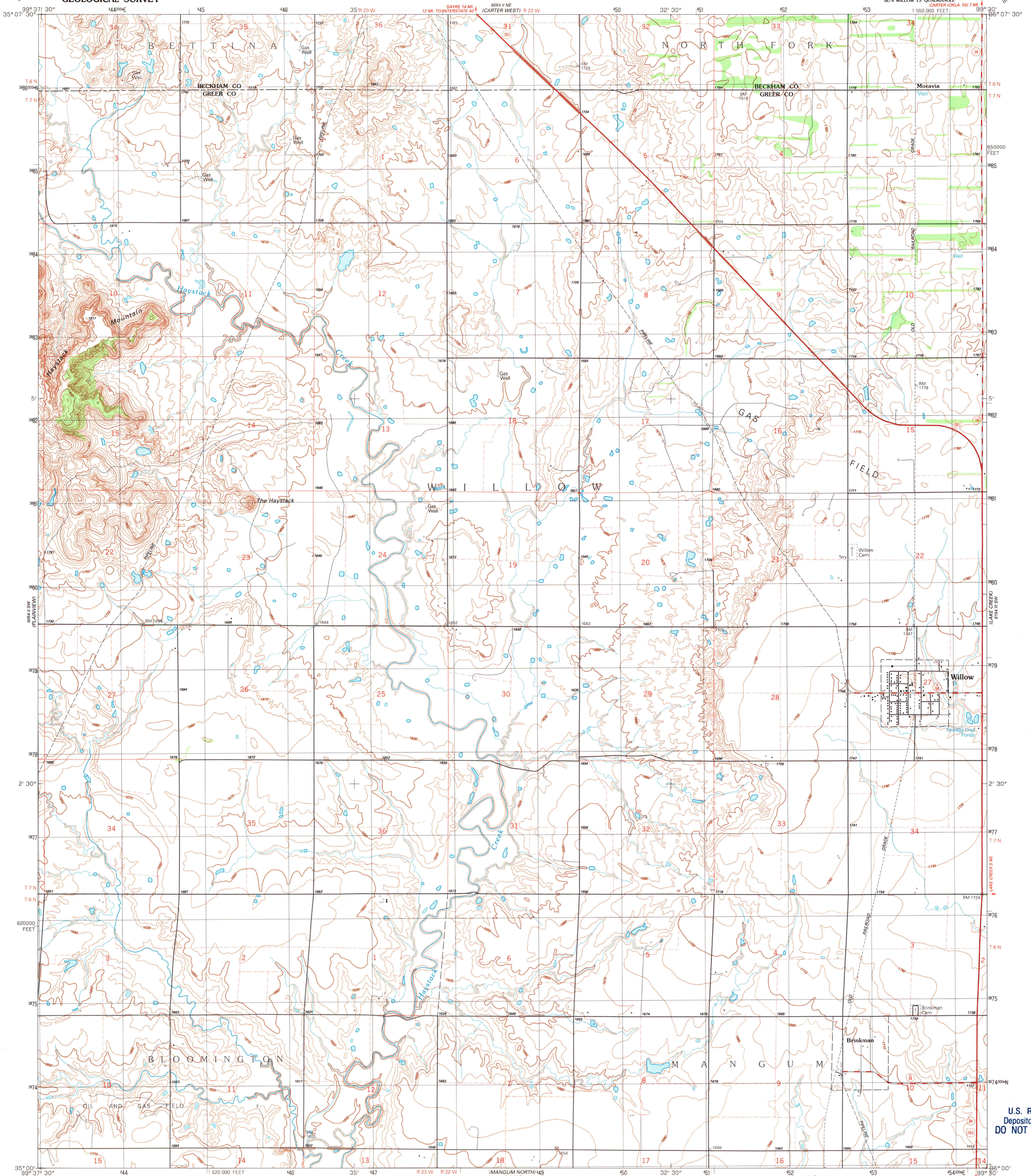
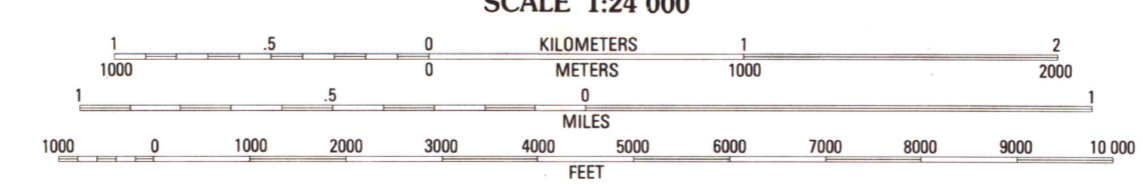
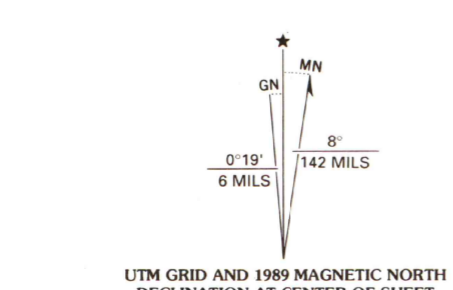


UNITED STATES
DEPARTMENT OF THE INTERIOR
GEOLOGICAL SURVEY

WILLOW QUADRANGLE
OKLAHOMA
7.5 MINUTE SERIES (TOPOGRAPHIC)

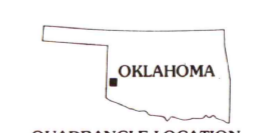


Produced by the United States Geological Survey
Control by USGS and NOS/NOAA
Topography by photogrammetric methods from aerial photographs taken 1958. Revised from aerial photographs taken 1984. Field checked 1989. Map edited 1989.
Projection and 10,000-foot grid ticks: Oklahoma coordinate system, south zone (Lambert conformal conic).
1000-meter Universal Transverse Mercator grid, zone 14 1927 North American Datum.
To place on the predicted North American Datum 1983, move the projection lines 3 meters south and 34 meters east as shown by dashed corner ticks.
Fine red dashed lines indicate selected fence and field lines where generally visible on aerial photographs. This information is unchecked.



CONTOUR INTERVAL 10 FEET
SUPPLEMENTARY CONTOUR INTERVAL 5 FEET
NATIONAL GEODETIC VERTICAL DATUM OF 1929

THIS MAP COMPLIES WITH NATIONAL MAP ACCURACY STANDARDS
FOR SALE BY U. S. GEOLOGICAL SURVEY, DENVER, COLORADO 80225, OR RESTON, VIRGINIA 22092
A FOLDER DESCRIBING TOPOGRAPHIC MAPS AND SYMBOLS IS AVAILABLE ON REQUEST



ROAD CLASSIFICATION

Primary highway, hard or improved surface
Secondary highway, hard surface
Interstate Route
U. S. Route
State Route

Light-duty road, hard or improved surface
Unimproved road

U.S. Regional
Depository Copy
DO NOT DISCARD

A. H. ROBINSON
MAP LIBRARY
MAY - 9 1990
University of Wisconsin
Madison

WILLOW, OKLA.
SE/4 WILLOW 15' QUADRANGLE
35099-A5-TT-024
1989
DMA 6054 II SE-SERIES V883