

Prepared under the direction of the Chief of Engineers by the Corps of Engineers, U. S. Army Map Service (AM), Washington, D. C. Compiled in 1948 from United States Quadrangles, 1:62,500, 1:125,000, U. S. Geological Survey, 1987-1940; County Highway Maps, 1936-1948; and intelligence data to 1948. Planimetric detail partially revised by photo-astrometric methods. Aerial photography 1938-1946. Aeronautical data (except Arkansas) road and railroad data verified by state authorities, 1949. Control by U. S. Coast and Geodetic Survey, U. S. Geological Survey and U. S. Engineers.

- LEGEND**
ROAD DATA 1949
- Hard surface, heavy duty road, more than two lanes wide
 - Hard surface, heavy duty road, two lanes wide
 - Hard surface, medium duty road, more than two lanes wide
 - Hard surface, medium duty road, two lanes wide
 - Loose surface, graded and drained road
 - Dirt road; Trail
 - Route markers: Federal; State
- RAILROADS**
- Standard gauge: Single track, Multiple track, Woodrack
 - Narrow gauge: Mine
- BOUNDARIES**
- International: Principal navigation light
 - State: Military airfield
 - County: Municipal or commercial airfield, Swamp, marsh
 - Park and reservation: Auxiliary airfield
 - Horizontal control point: Seaplane base
 - Spot elevation in feet: Seaplane anchorage
- POPULATED PLACES**
- 500,000 or over: BOSTON
 - 100,000 to 500,000: RICHMOND
 - 25,000 to 100,000: ALEXANDRIA
 - 5,000 to 25,000: Marion
 - 1,000 to 5,000: Old Dominion
 - 1,000 or less: Stowell

SECTIONIZED TOWNSHIP

6	5	4	3	2	1
7	8	9	10	11	12
18	17	16	15	14	13
19	20	21	22	23	24
30	29	28	27	26	25
31	32	33	34	35	36

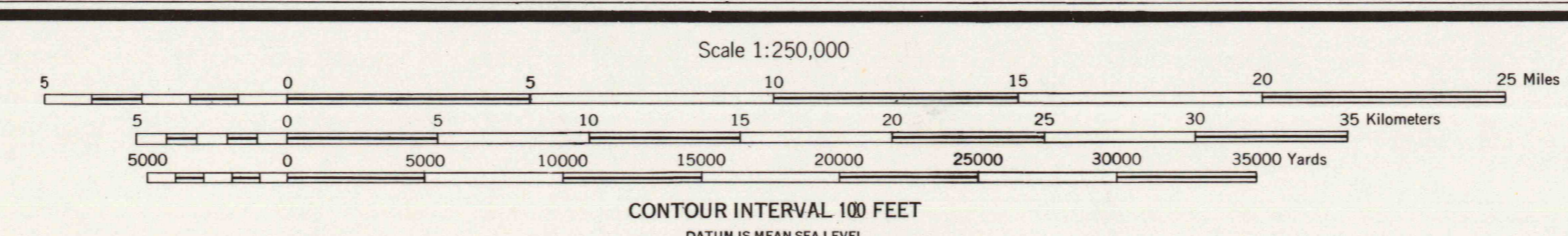
INDEX TO BOUNDARIES

11	10	9	8	7	6	5	4	3	2	1	
12	11	10	9	8	7	6	5	4	3	2	1

Arkansas Counties: 1. Sevier, 2. Howard, 3. Pike, 4. Scott, 5. Sebastian

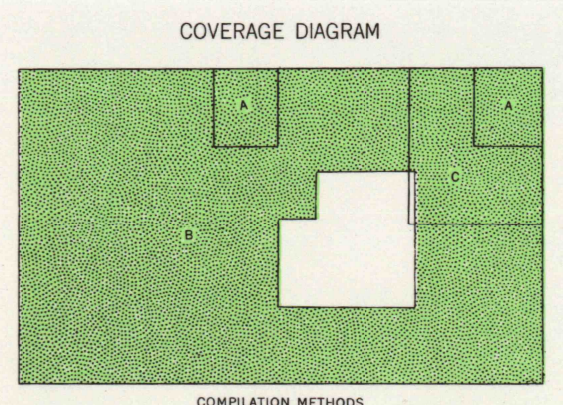
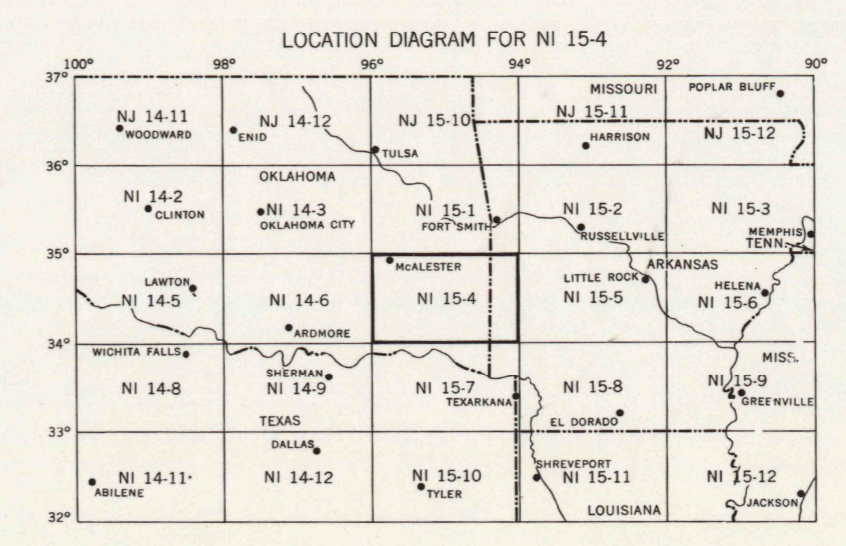
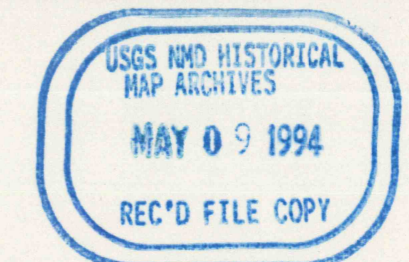
Oklahoma Counties: 6. Le Flore, 7. McClain, 8. Choctaw, 9. Pushmataha, 10. Latimer

Mississippi: 11. Pittsburg, 12. Atoka, 13. Brown



FOR SALE BY U. S. GEOLOGICAL SURVEY, DENVER, COLORADO 80225 OR WASHINGTON, D. C. 20242

TOWNSHIP OR RANGE LINE
LAND GRANT BOUNDARY



McALESTER, UNITED STATES - OK
N3400W9400E100X200