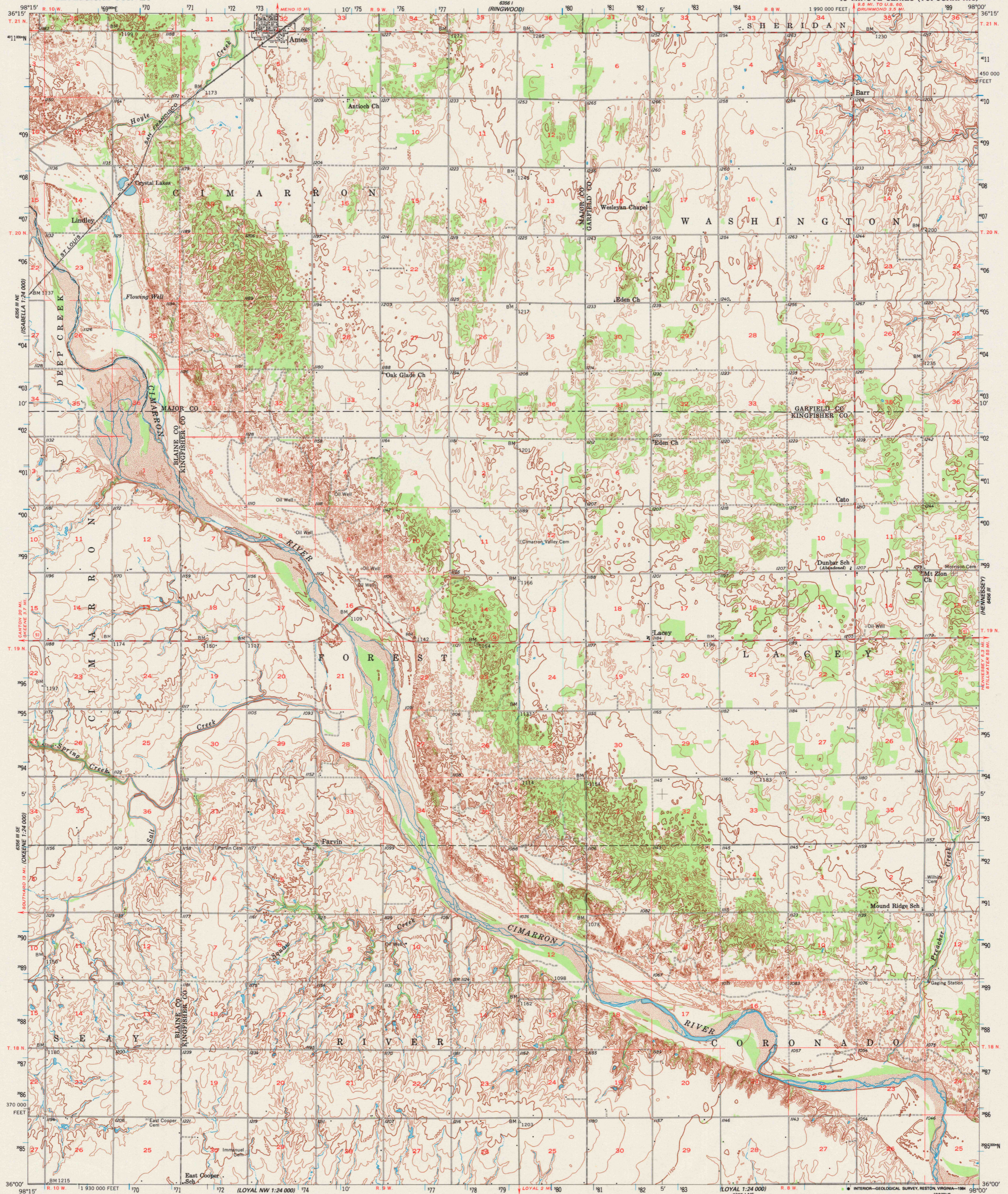


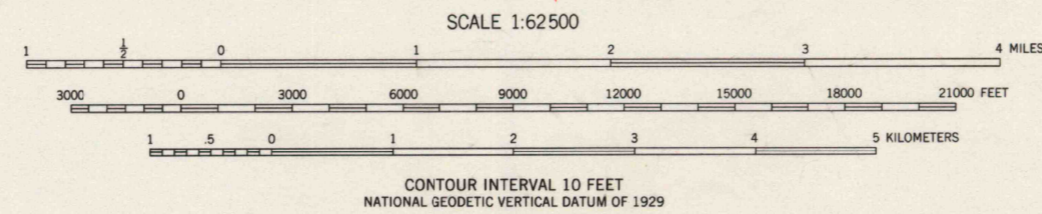
Scale 1:24,000
1:24,000
Scale 1:24,000

UNITED STATES
DEPARTMENT OF THE INTERIOR
GEOLOGICAL SURVEY

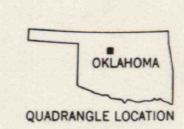
AMES QUADRANGLE
OKLAHOMA
15 MINUTE SERIES (TOPOGRAPHIC)



Maped, edited, and published by the Geological Survey
Control by USGS, USC&GS, and Oklahoma Geodetic Survey
Topography from aerial photographs by Kelsch plotters
Aerial photographs taken 1954. Field check 1956
Polyconic projection. 1927 North American datum
10,000-foot grid based on Oklahoma coordinate system, north zone
1000-meter Universal Transverse Mercator grid ticks,
zone 14, shown in blue
To place on the predicted North American Datum 1983,
move the projection lines 1 meter south and 30 meters east



ROAD CLASSIFICATION
Medium-duty — Light-duty
Unimproved dirt —
State Route
This area also covered by 7.5-minute, 1:24,000-scale
maps: Ames 1982, Barr 1982, Parvin 1982, and Lacey 1982



AMES, OKLA.
N3600-W9800/15

THIS MAP COMPLIES WITH NATIONAL MAP ACCURACY STANDARDS
FOR SALE BY U. S. GEOLOGICAL SURVEY, DENVER, COLORADO 80225, OR RESTON, VIRGINIA 22092
AND OKLAHOMA GEOLOGICAL SURVEY, NORMAN, OKLAHOMA 73069
A FOLDER DESCRIBING TOPOGRAPHIC MAPS AND SYMBOLS IS AVAILABLE ON REQUEST

1956
DMA 6356 II-SERIES V783

RETURN TO:
USGS NED HISTORICAL MAP ARCHIVES