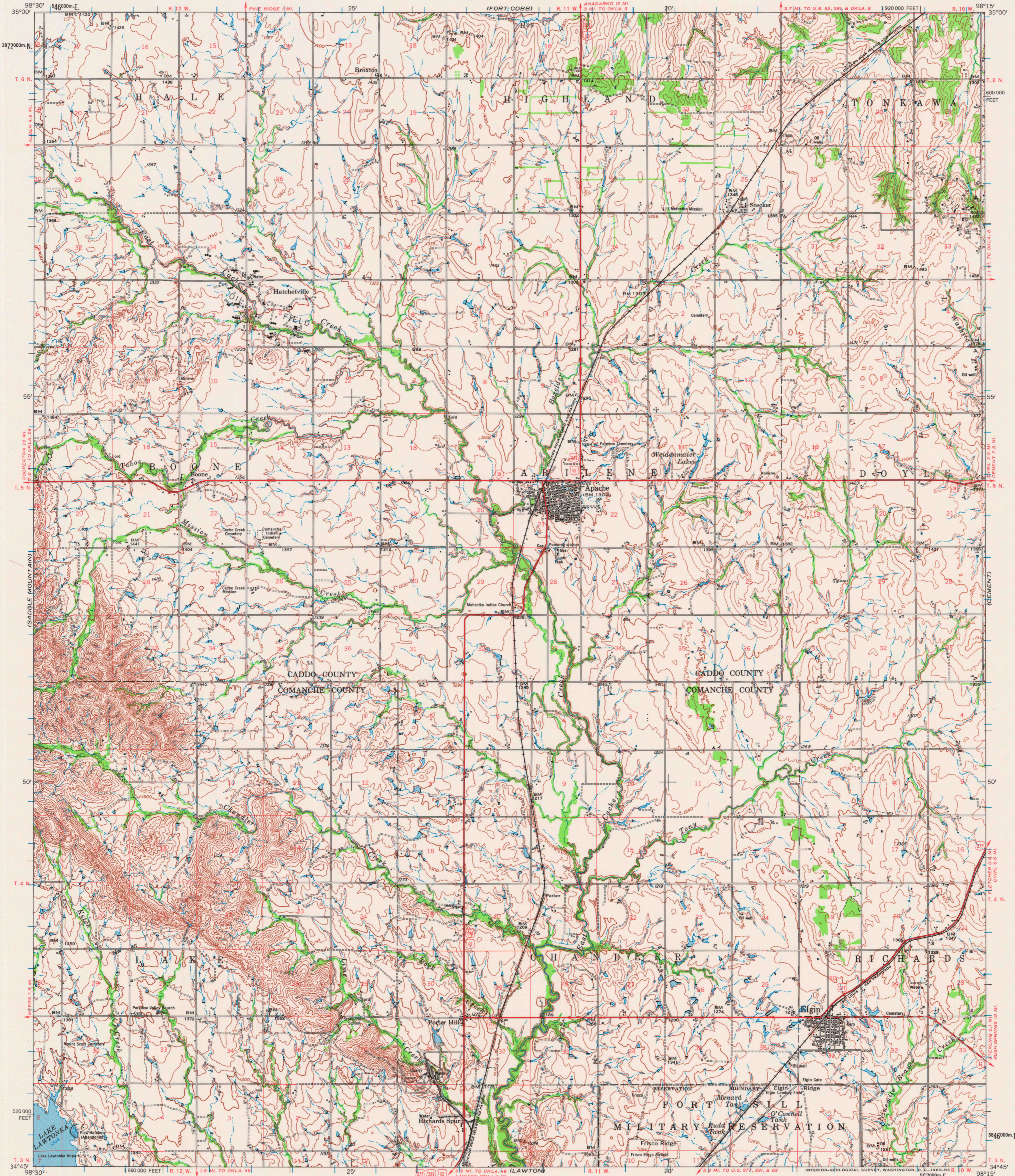
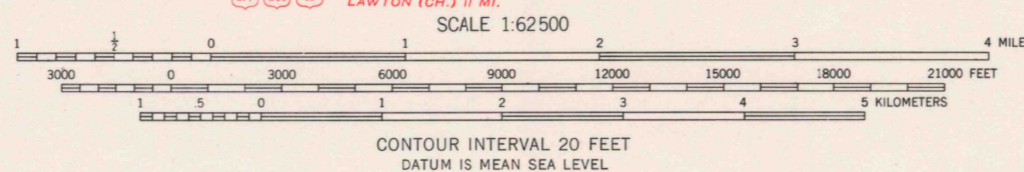


(ANADARKO)

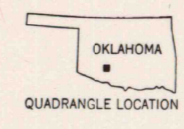


Mapped by the Army Map Service
Published for civil use by the Geological Survey
Control by USGS, USC&GS, USCE, and Oklahoma Geodetic Survey
Compiled by the Army Map Service from Apache, Boone,
Richards Spur, and Elgin 7.5-minute quadrangle maps,
surveyed 1949, revised 1956
Topography by photogrammetric methods from aerial photographs
taken 1947-1948. Culture and drainage revised from aerial
photographs taken 1954. Field check 1956
Polyconic projection. 1927 North American datum
10,000-foot grid based on Oklahoma coordinate system, south zone
1000-meter Universal Transverse Mercator grid ticks,
zone 14, shown in blue
Unchecked elevations are shown in brown



ROAD CLASSIFICATION
Heavy-duty ——— Light-duty ———
Medium-duty ——— Unimproved dirt ———
U.S. Route ——— State Route ———
This area also covered by 1:24,000-scale maps of
Apache, Boone, Richards Spur, and Elgin 7.5
minute quadrangles, surveyed 1956
APACHE, OKLA.
N 3445—W 9815/15
1956

THIS MAP COMPLIES WITH NATIONAL MAP ACCURACY STANDARDS
FOR SALE BY U. S. GEOLOGICAL SURVEY, DENVER 25, COLORADO OR WASHINGTON 25, D. C.
A FOLDER DESCRIBING TOPOGRAPHIC MAPS AND SYMBOLS IS AVAILABLE ON REQUEST



RETURN TO:
MND HISTORICAL MAP ARCHIVES
USGS NATIONAL CENTER, MS-522
RESTON, VA 22092

July 30 1982