



CLAYTON 36 MI.  
HONOLIA 4.2 MI.  
WINDING STAIR 1:125,000

34°45' (PAGE)

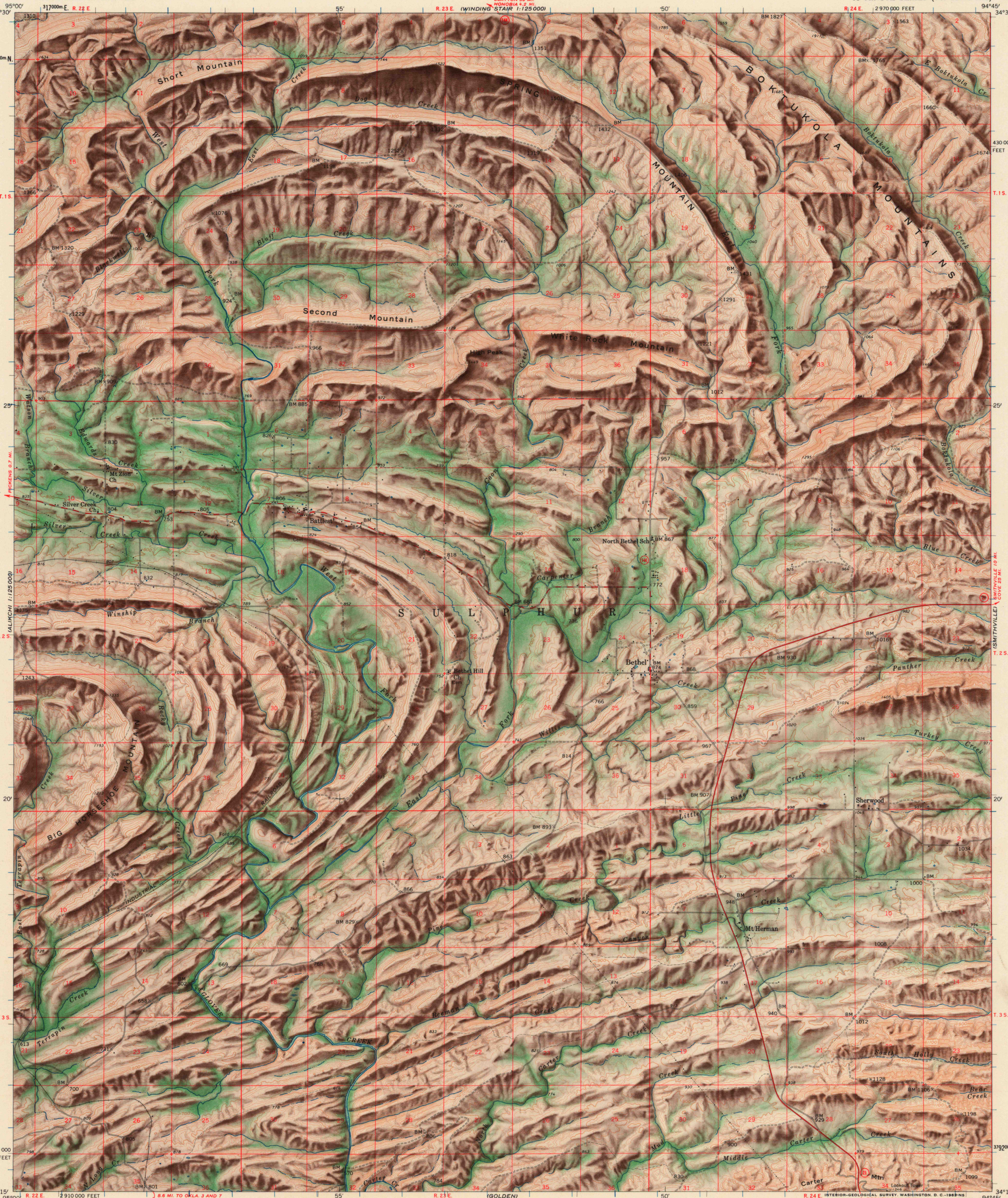
430 000  
FEET

IS (SMITHVILLE)  
3072 250 FEET

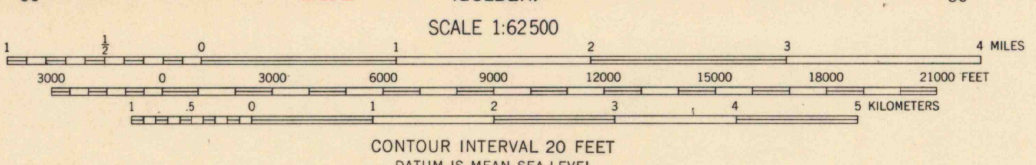
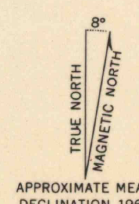
3792 000m N.

338000m E.

34°15'

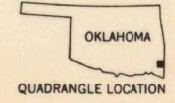


Mapped, edited, and published by the Geological Survey  
Control by USGS and USC&GS  
Topography from aerial photographs by photogrammetric methods  
Aerial photographs taken 1955. Field check 1960  
Polyconic projection. 1927 North American datum  
10,000-foot grid based on Oklahoma coordinate system, south zone  
1000-meter Universal Transverse Mercator grid ticks,  
zone 15, shown in blue



ROAD CLASSIFICATION

Heavy-duty	Light-duty
Medium-duty	Unimproved dirt
State Route	



USGS  
Historical File  
Topographic Division

BETHEL, OKLA.  
N3415—W9445/15

1960  
SHADED RELIEF ADDED 1963

FEB 25 1963  
2185

THIS MAP COMPLIES WITH NATIONAL MAP ACCURACY STANDARDS  
FOR SALE BY U. S. GEOLOGICAL SURVEY, DENVER 25, COLORADO OR WASHINGTON 25, D. C.  
A FOLDER DESCRIBING TOPOGRAPHIC MAPS AND SYMBOLS IS AVAILABLE ON REQUEST