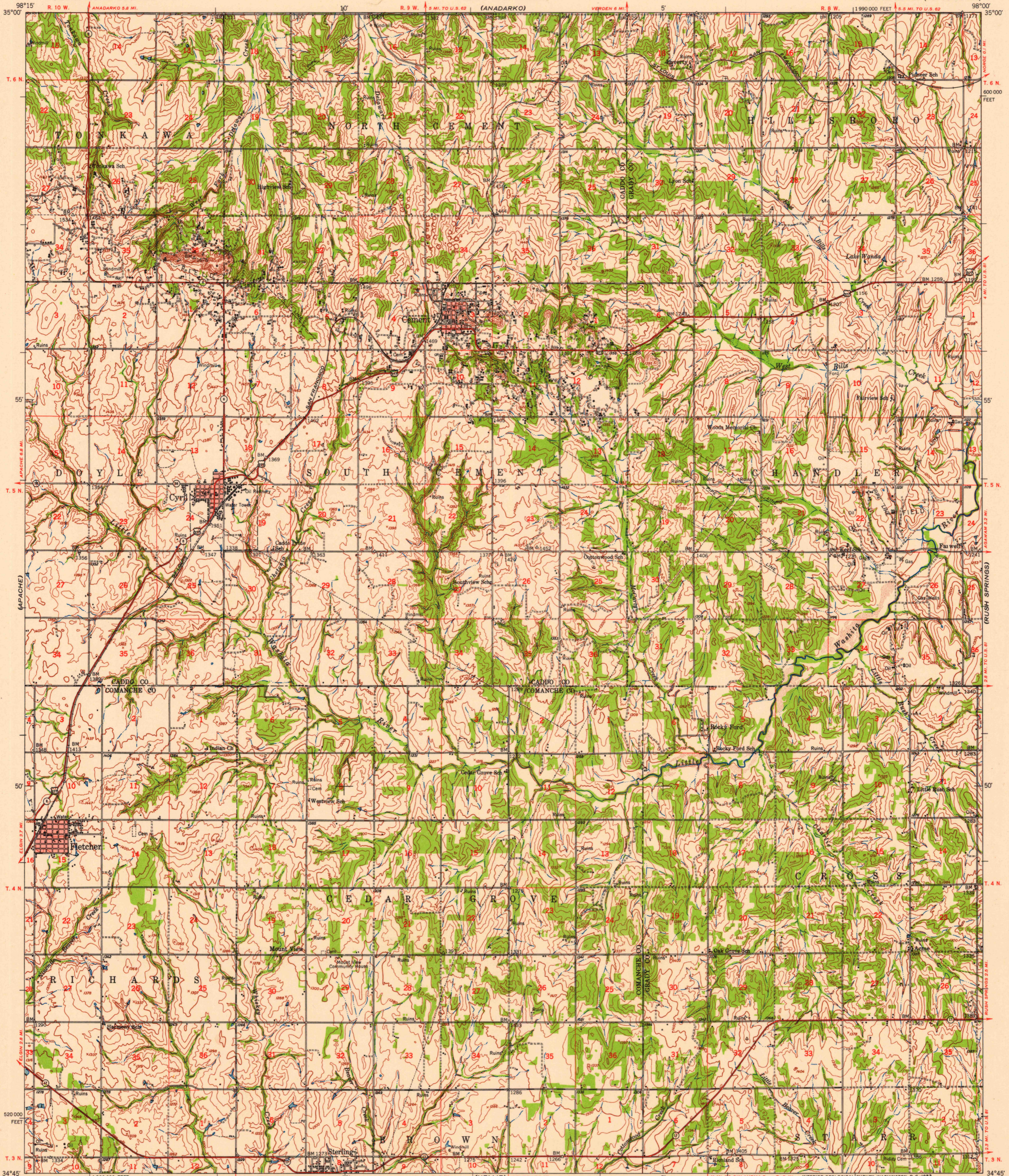
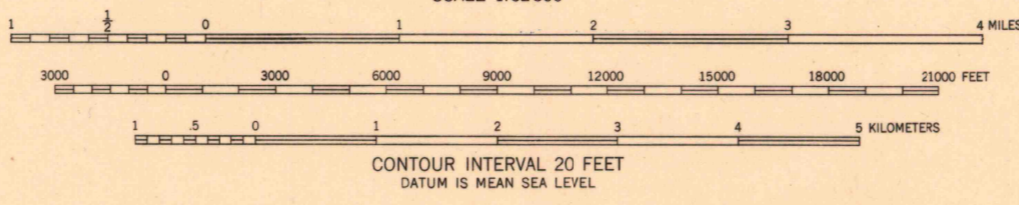


(1:250,000)
1:250,000

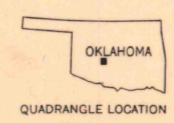


Mapped by the Army Map Service
Published for civil use by the Geological Survey
Control by USGS, USC&GS, USCE, and Oklahoma
Geodetic Survey
Topography from aerial photographs by multiplex methods
Aerial photographs taken 1947. Field check 1949
Polyconic projection. 1927 North American datum
10,000-foot grid based on Oklahoma coordinate system
south zone
Red tint indicates areas in which only
landmark buildings are shown
Unchecked elevations are shown in brown

TRUE NORTH
MAGNETIC NORTH
APPROXIMATE MEAN
DECLINATION, 1949



ROAD CLASSIFICATION
Heavy-duty 2 LANE 6 LANE Light-duty
Medium-duty 2 LANE 6 LANE Unimproved dirt
U. S. Route State Route



USGS
Historical File
Topographic Division

CEMENT, OKLA.
N3445-W9800/15
1949

FOR SALE BY U. S. GEOLOGICAL SURVEY, FEDERAL CENTER, DENVER, COLORADO OR WASHINGTON 25, D. C.
A FOLDER DESCRIBING TOPOGRAPHIC MAPS AND SYMBOLS IS AVAILABLE ON REQUEST

AUG 4 1953
2665