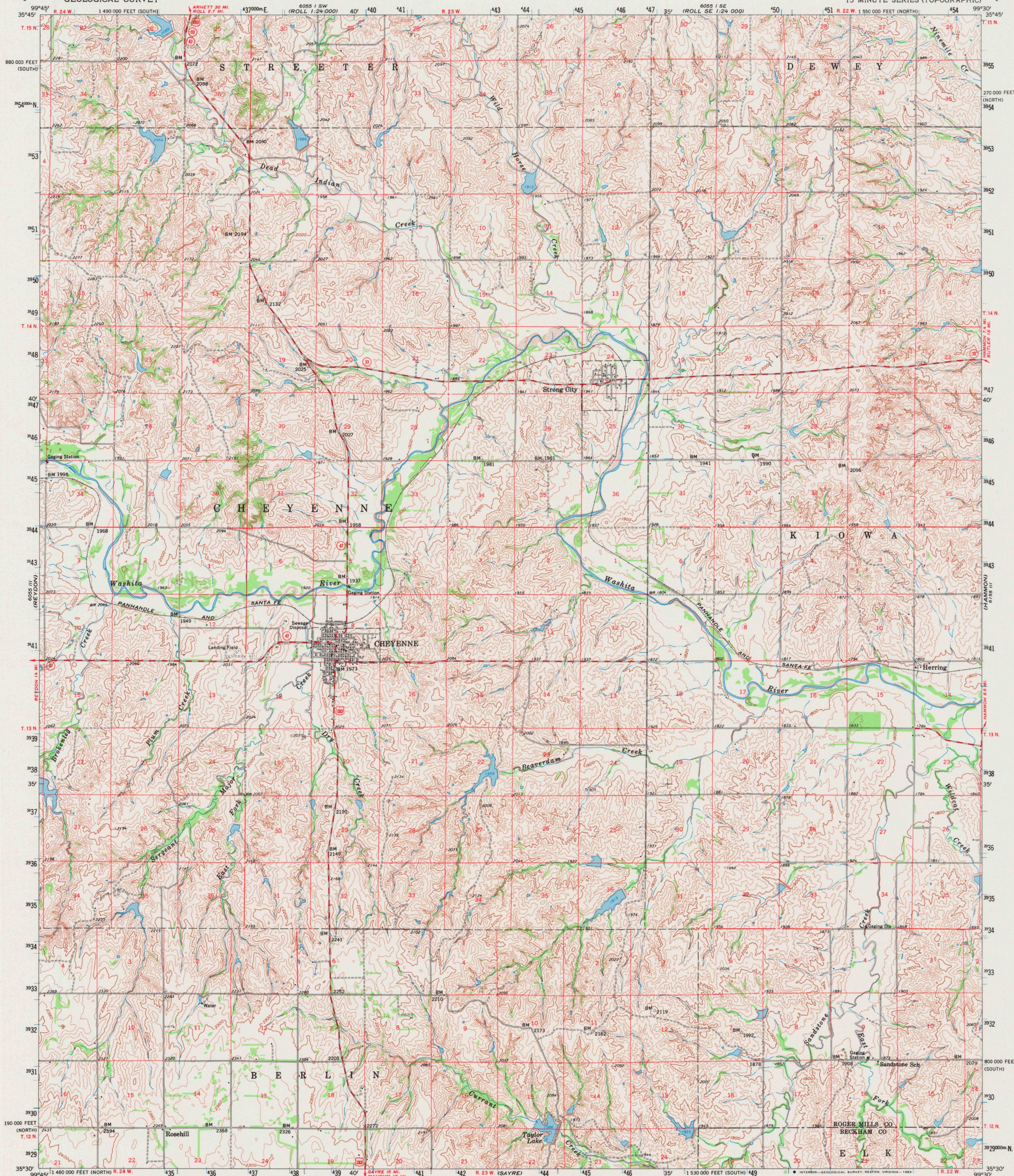
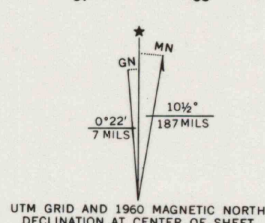


UNITED STATES
DEPARTMENT OF THE INTERIOR
GEOLOGICAL SURVEY

CHEYENNE QUADRANGLE
OKLAHOMA
15 MINUTE SERIES (TOPOGRAPHIC)



Maped, edited, and published by the Geological Survey
Control by USGS, USC&GS, and Oklahoma Geological Survey
Topography from aerial photographs by photogrammetric methods
Aerial photographs taken 1956. Field check 1960
Polyconic projection. 1927 North American datum
10,000-foot grid based on Oklahoma coordinate system,
north and south zones
1000-meter Universal Transverse Mercator grid ticks,
zone 14, shown in blue
To place on the predicted North American Datum 1983,
move the projection lines 2 meters south and 34 meters east



SCALE 1:62,500
CONTOUR INTERVAL 20 FEET
NATIONAL GEODETIC VERTICAL DATUM OF 1929

THIS MAP COMPLIES WITH NATIONAL MAP ACCURACY STANDARDS
FOR SALE BY U. S. GEOLOGICAL SURVEY, DENVER, COLORADO 80225, OR RESTON, VIRGINIA 22092
AND OKLAHOMA GEOLOGICAL SURVEY, NORMAN, OKLAHOMA 73069
A FOLDER DESCRIBING TOPOGRAPHIC MAPS AND SYMBOLS IS AVAILABLE ON REQUEST

ROAD CLASSIFICATION
Medium-duty ——— Light-duty ———
Unimproved dirt ———
U. S. Route ——— State Route ———



CHEYENNE, OKLA.
N 3530—W 9930/15
1960

AMS 6055 II—SERIES V783

RETURN TO:
USGS AND HISTORICAL MAP ARCHIVES