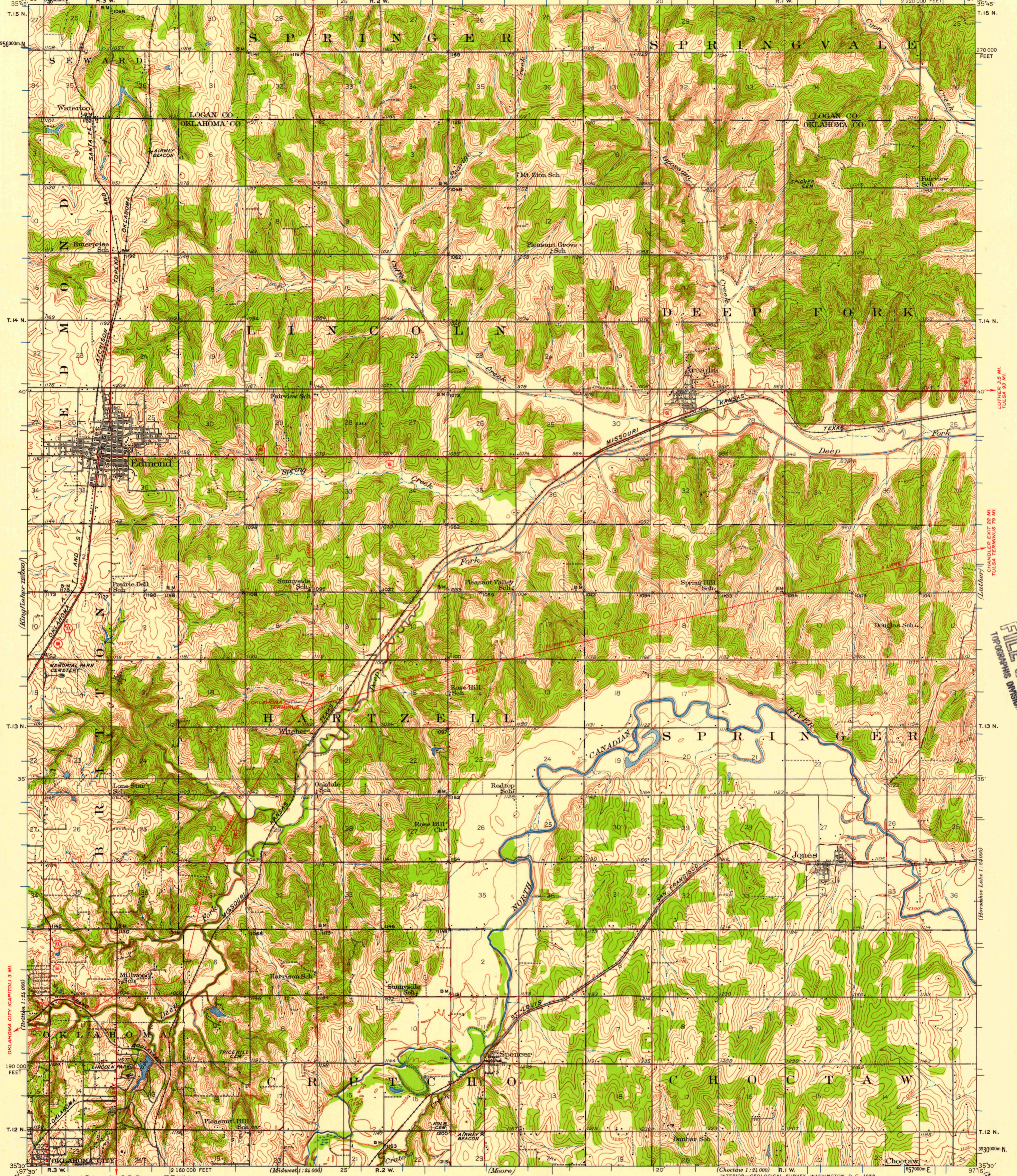


UNITED STATES  
DEPARTMENT OF THE INTERIOR  
GEOLOGICAL SURVEY

OKLAHOMA  
EDMOND QUADRANGLE  
2 220 000 FEET

38 MI. TO U.S. 64  
GUTHRIE 9 MI.

38 MI. TO U.S. 64  
GUTHRIE 9 MI.



38 MI. TO U.S. 64  
GUTHRIE 9 MI.

CHANDLER EXT 22 MI.  
TULSA TERMINUS 79 MI.

(Horseshoe Lake 1:25000)

(Midwest 1:24000)

(Choctaw 1:24000)

(Kingsfisher 1:25000)

(Kingsfisher 1:25000)

OKLAHOMA CITY (CAPITOL) 3 MI.  
(British 1:24000)

(Chickasha 1:25000)

U.S.G.S.  
FILE COPY  
TOPOGRAPHIC DIVISION

Topography by J.B. Leavitt, S.D. Farmer, T.T. White,  
Noel Evans, G.R. Richardson, R.W. Blackburn,  
D.M. Allen, T.B. Matthews, and L.H. Bray  
Surveyed in 1933-1935  
38 MI. TO U.S. 64 AND 870  
OKLAHOMA CITY (CAPITOL) 3 MI.  
ROAD CLASSIFICATION

Heavy-duty ——— Light-duty ———  
Medium-duty ——— Unimproved dirt ———  
U.S. Route      State Route

APPROXIMATE MEAN  
DECLINATION, 1936

SCALE 1:62500  
0 1 2 3 4 MILES  
0 3000 6000 9000 12000 15000 18000 21000 FEET  
0 1 2 3 4 5 KILOMETERS

CONTOUR INTERVAL 10 FEET  
DATUM IS MEAN SEA LEVEL

U.S.G.S.  
Historical File  
Topographic Division

Maps of Jones and Spencer quadrangles,  
scale 1:24000, from later (1955) and more  
detailed surveys of the southeast and  
southwest quarters of this area, are available

10,000-foot grid based on Oklahoma (North)  
rectangular coordinate system  
1000-meter Universal Transverse Mercator grid ticks,  
zone 14, shown in blue

EDMOND, OKLA.  
N 3530-W9715/15

1935

FOR SALE BY U.S. GEOLOGICAL SURVEY, DENVER 2, COLORADO OR WASHINGTON 25, D. C.  
A FOLDER DESCRIBING TOPOGRAPHIC MAPS AND SYMBOLS IS AVAILABLE ON REQUEST

U.S.G.S.  
FILE COPY

DEC 23 1935