

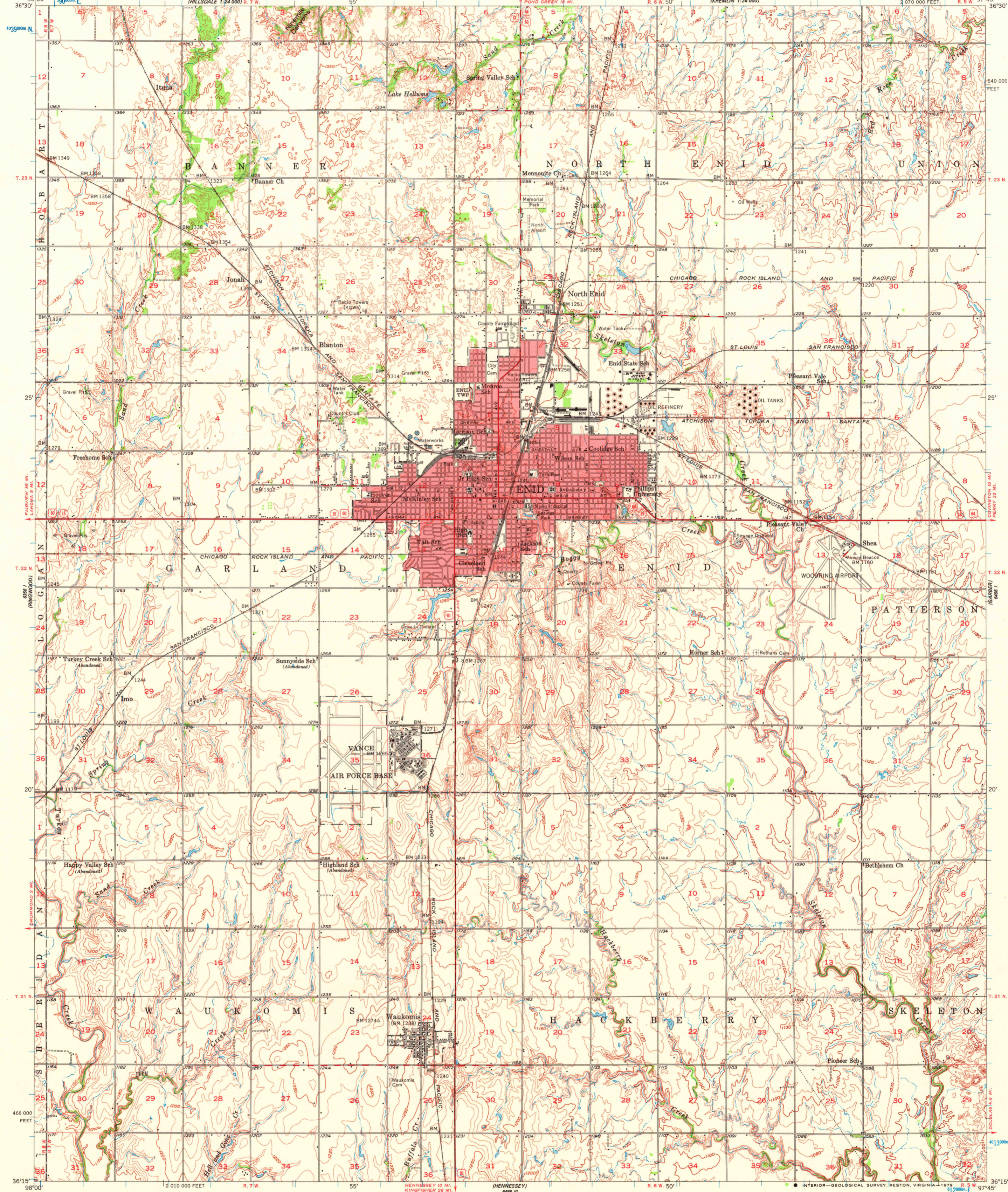
6467 III SW
(HILLSDALE 1:24 000) R. 7 W

UNITED STATES
DEPARTMENT OF THE INTERIOR
GEOLOGICAL SURVEY

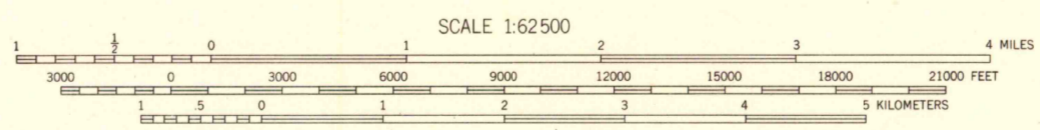
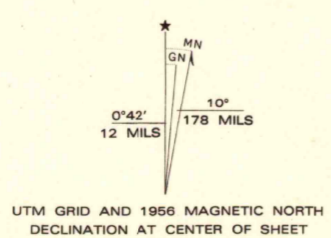


ENID QUADRANGLE
OKLAHOMA-GARFIELD CO.
15 MINUTE SERIES (TOPOGRAPHIC)

6467 III SE
(KREMLIN 1:24 000) R. 6 W 50'

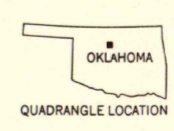


Mapped, edited, and published by the Geological Survey
Control by USGS, USC&GS, and Oklahoma Geodetic Survey
Topography from aerial photographs by Kelsch plotters
Aerial photographs taken 1954. Field check 1955 1956
Polyconic projection. 1927 North American datum
10,000-foot grid based on Oklahoma coordinate system, north zone
1000-meter Universal Transverse Mercator grid ticks,
zone 14, shown in blue
Red tint indicates area in which only
landmark buildings are shown



CONTOUR INTERVAL 10 FEET
NATIONAL GEODETIC VERTICAL DATUM OF 1929

ROAD CLASSIFICATION	
Heavy-duty	Light-duty
Medium-duty	Unimproved dirt
U.S. Route	State Route



The north half of this area also covered by
1:24 000 scale maps of Enid East and Enid West,
7.5 minute quadrangles, surveys 1955

ENID, OKLA.
N3615-W9745/15

THIS MAP COMPLIES WITH NATIONAL MAP ACCURACY STANDARDS
FOR SALE BY U. S. GEOLOGICAL SURVEY, DENVER, COLORADO 80225, OR RESTON, VIRGINIA 22092
A FOLDER DESCRIBING TOPOGRAPHIC MAPS AND SYMBOLS IS AVAILABLE ON REQUEST

USGS
Historical File
Topographic Division

1956
AMS 6456 IV-SERIES V783

APR 16 1978

1800