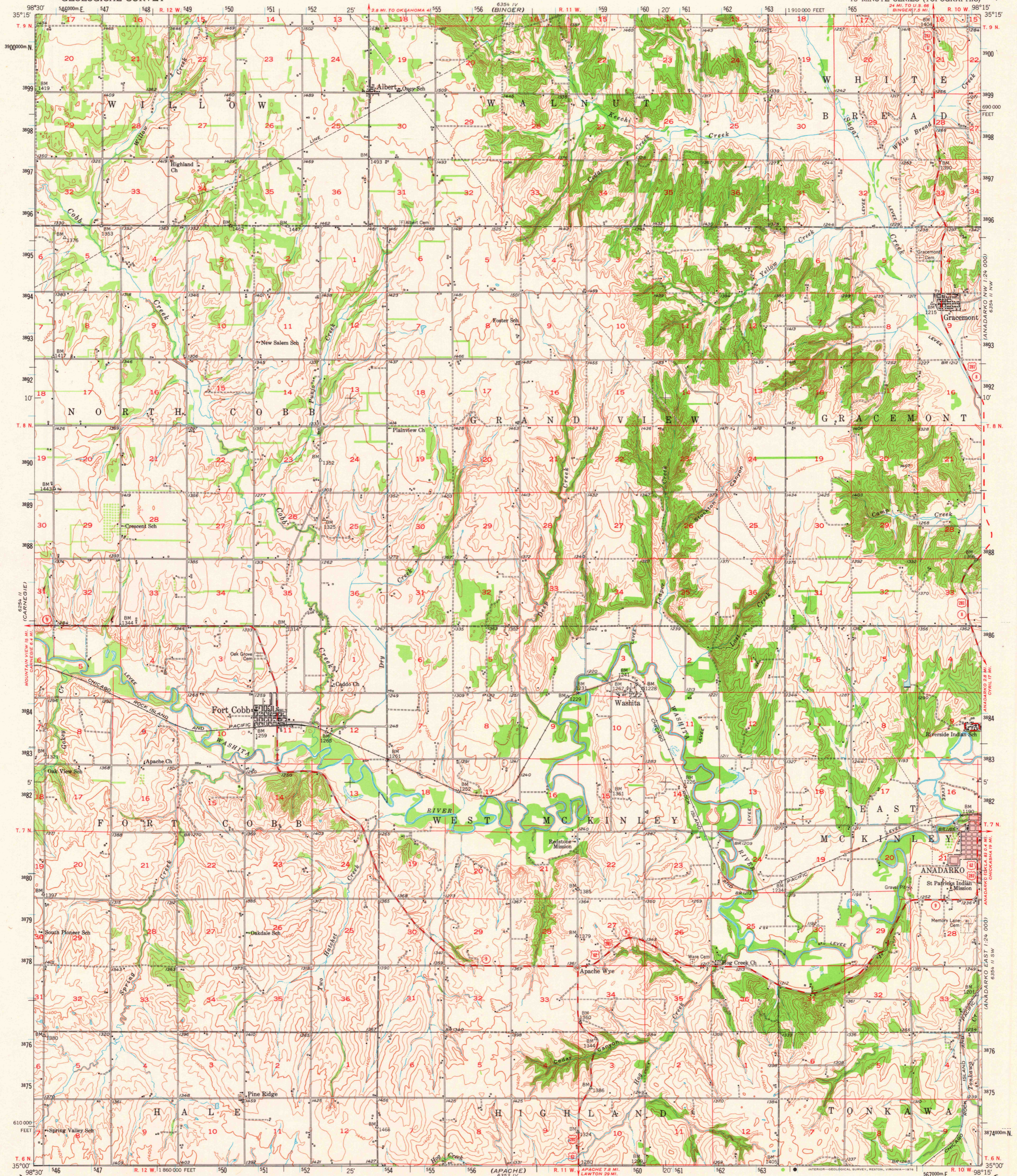


UNITED STATES
DEPARTMENT OF THE INTERIOR
GEOLOGICAL SURVEY

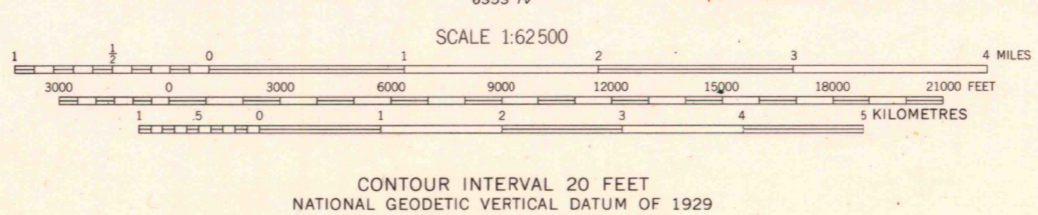
FORT COBB QUADRANGLE
OKLAHOMA-CADDO CO.
15 MINUTE SERIES (TOPOGRAPHIC)



Mapped, edited, and published by the Geological Survey
Control by USGS, USC&GS, and Oklahoma Geological Survey
Topography from aerial photographs by multiplex methods and by
plane-table surveys 1950-1951. Aerial photographs taken 1947.
Field check 1950-1951.

Polyconic projection. 1927 North American datum
10,000-foot grid based on Oklahoma coordinate system,
south zone

Red tint indicates area in which only
landmark buildings are shown
1000-metre Universal Transverse Mercator grid ticks,
zone 14, shown in blue



ROAD CLASSIFICATION
Heavy-duty ——— 4 LANE 16 LANE Light-duty ———
Medium-duty ——— 4 LANE 16 LANE Unimproved dirt ———
U. S. Route ——— State Route ———

THIS MAP COMPLIES WITH NATIONAL MAP ACCURACY STANDARDS
FOR SALE BY U. S. GEOLOGICAL SURVEY, DENVER, COLORADO 80225, OR RESTON, VIRGINIA 22092
A FOLDER DESCRIBING TOPOGRAPHIC MAPS AND SYMBOLS IS AVAILABLE ON REQUEST

FORT COBB, OKLA.
N3500-W9815/15
1951

JUL 10 1976

AMS 6354 III—SERIES V783

USGS
Historical File
Topographic Division