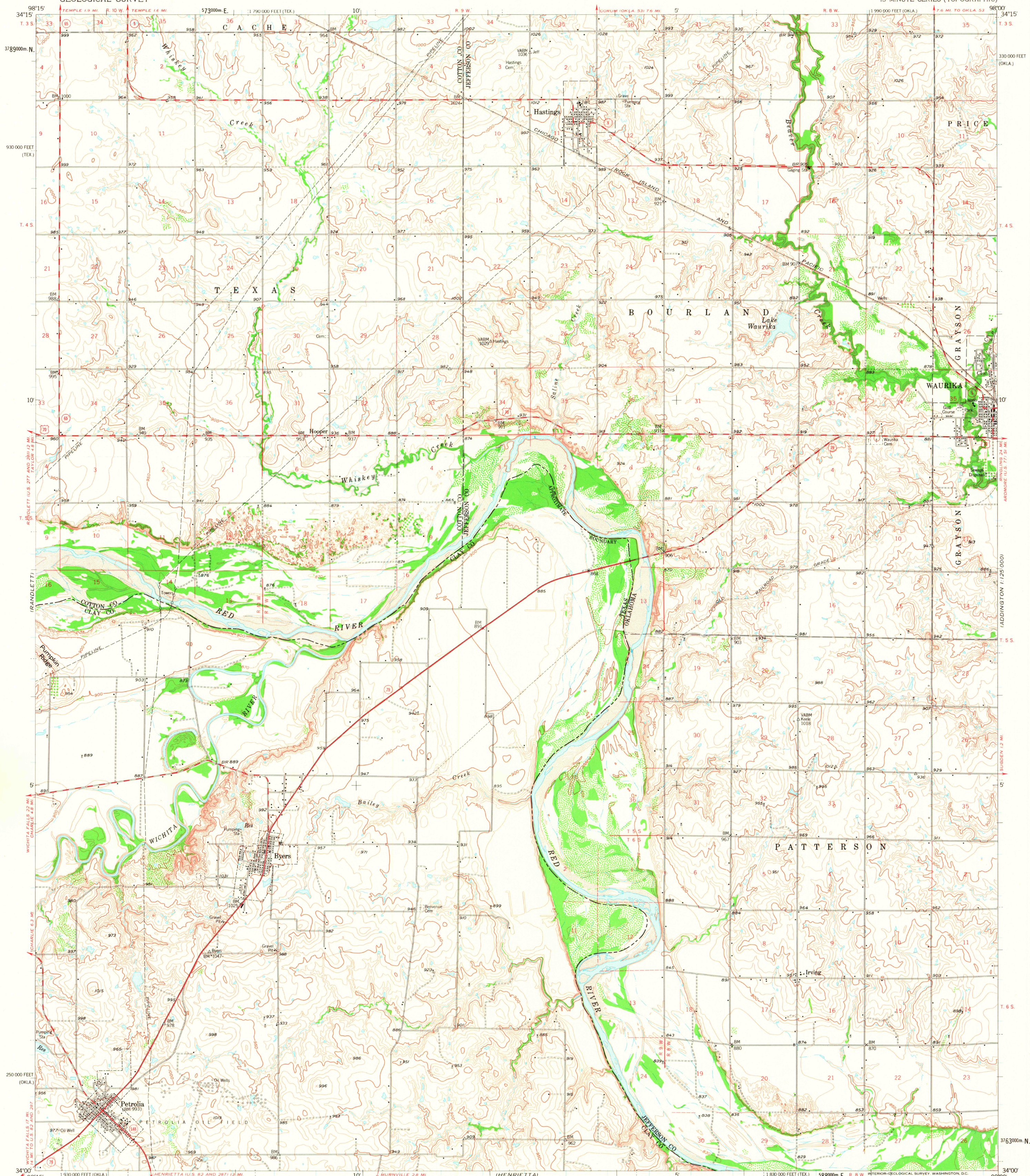


UNITED STATES
DEPARTMENT OF THE INTERIOR
GEOLOGICAL SURVEY

HASTINGS QUADRANGLE
OKLAHOMA-TEXAS
15 MINUTE SERIES (TOPOGRAPHIC)

ADDITIONAL
1:125,000



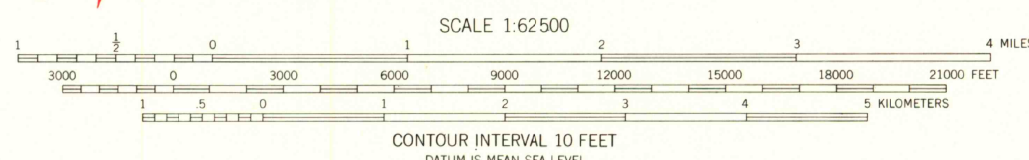
Mapped, edited, and published by the Geological Survey
Control by USGS and USC&GS

Topography from aerial photographs by photogrammetric methods
and by planetable surveys 1957. Aerial photographs taken 1953

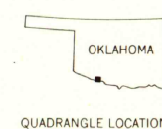
Polyconic projection. 1927 North American datum
10,000-foot grid based on Oklahoma coordinate system, south zone and
Texas coordinate system, north central zone
1000-meter Universal Transverse Mercator grid ticks,
zone 14, shown in blue

Dashed land lines indicate approximate locations

TRUE NORTH
MAGNETIC NORTH
APPROXIMATE MEAN
DECLINATION, 1957



ROAD CLASSIFICATION
Heavy-duty ——— Light-duty ———
Medium-duty ——— Unimproved dirt ———
U.S. Route ——— State Route ———



QUADRANGLE LOCATION

HASTINGS, OKLA.-TEX.
N3400-W9800/15
1957

RETURN TO:
MMD HISTORICAL MAP ARCHIVES
USGS NATIONAL CENTER, MS-522
RESTON, VA 22092

MAY 21, 1975