

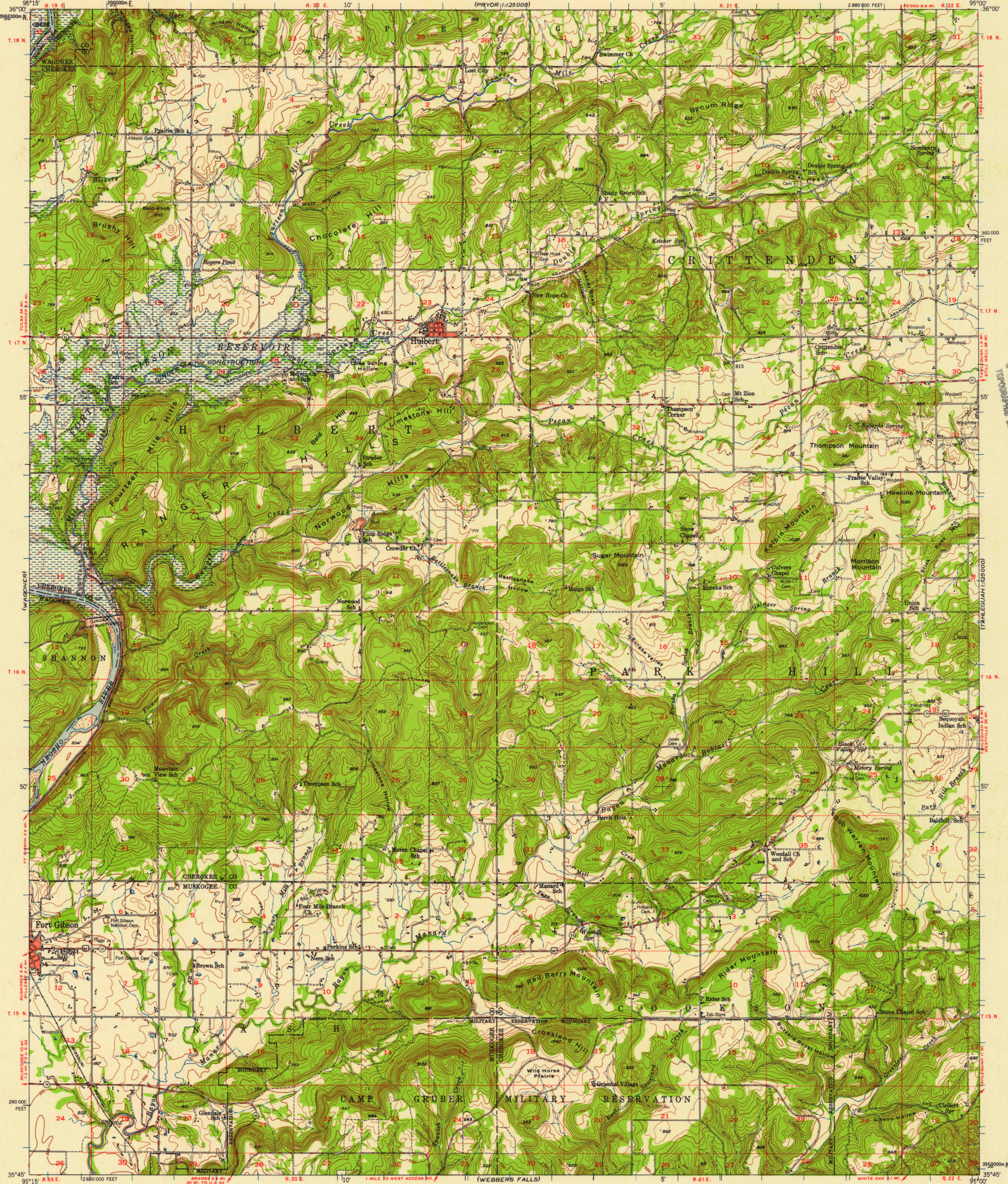
(PRYOR 1:25000)

UNITED STATES
DEPARTMENT OF THE INTERIOR
GEOLOGICAL SURVEY

UNITED STATES
DEPARTMENT OF THE ARMY
CORPS OF ENGINEERS
(PRYOR 1:25000)

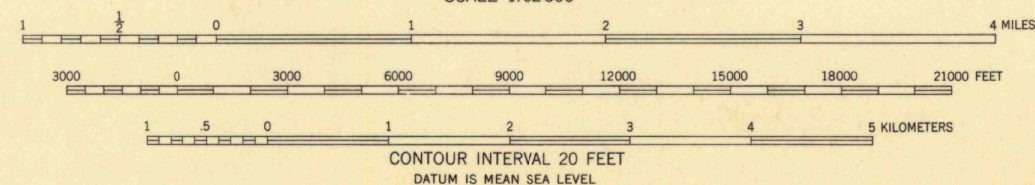
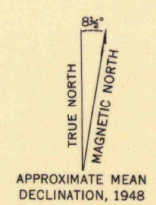
HULBERT QUADRANGLE
OKLAHOMA
15 MINUTE SERIES (TOPOGRAPHIC)

(SIOUX SPRINGS
1:25000)



U.S.G.S.
FILE COPY
TOPOGRAPHIC DIVISION

Maped by the Army Map Service
Edited and published by the Geological Survey
Control by US&GS and AMS
Topography from aerial photographs by multiplex methods
Aerial photographs taken 1946. Field check 1948
Polyconic projection. 1927 North American datum
10,000-foot grid based on Oklahoma coordinate system, north zone
No distinction is made between dwellings, barns, commercial, and industrial buildings
Red tint indicates areas in which only landmark buildings are shown
1000-meter Universal Transverse Mercator grid ticks, zone 15, shown in blue



U.S.G.S.
FILE COPY
TOPOGRAPHIC DIVISION
USCS
Historical File
Topographic Division
HULBERT, OKLA.
N3545-W9500/15
1948

THIS MAP COMPLIES WITH NATIONAL MAP ACCURACY STANDARDS
FOR SALE BY U. S. GEOLOGICAL SURVEY, DENVER 2, COLORADO OR WASHINGTON 25, D. C.
A FOLDER DESCRIBING TOPOGRAPHIC MAPS AND SYMBOLS IS AVAILABLE ON REQUEST

NOV 20 1957
1910