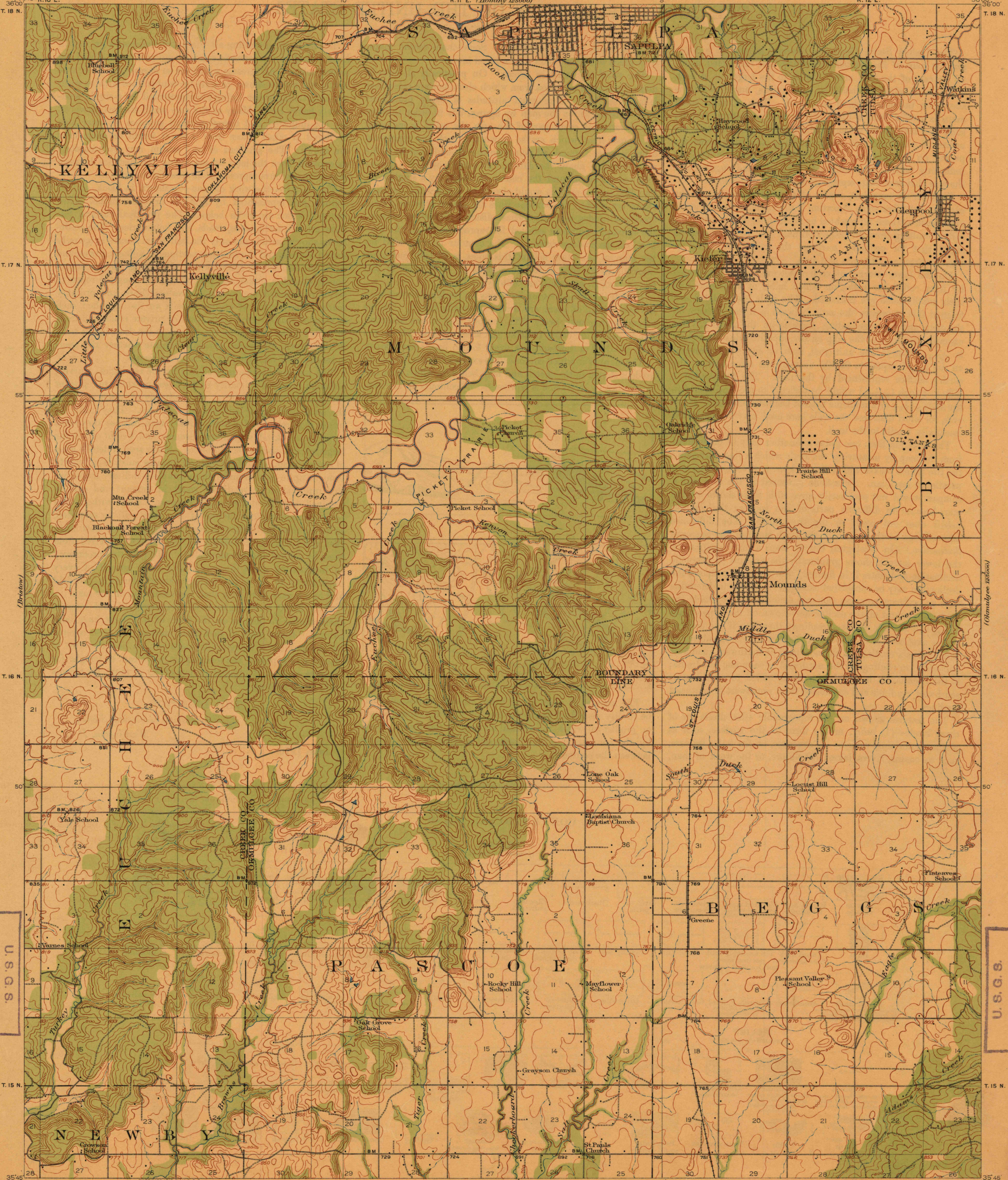


DEPARTMENT OF THE INTERIOR  
FRANKLIN K. LANE, SECRETARY  
U. S. GEOLOGICAL SURVEY  
GEORGE OTIS SMITH, DIRECTOR

TOPOGRAPHY  
STATE OF OKLAHOMA  
GEOLOGICAL SURVEY  
C. W. SHANNON, DIRECTOR  
R. 11 E. (Hominy 125000)

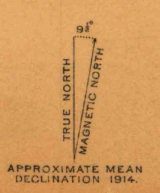
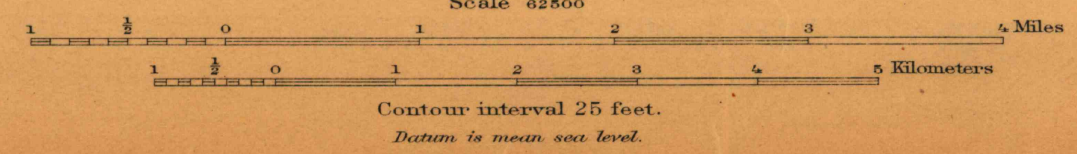
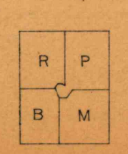
OKLAHOMA  
KIEFER QUADRANGLE



U. S. G. S.  
FILE COPY  
Ed. Div. Topographic Maps

U. S. G. S.  
FILE COPY  
Ed. Div. Topographic Maps

ENGRAVED 1916 BY U. S. G. S.  
R. B. Marshall, Chief Geographer.  
Sledge Tatum, Geographer in charge.  
Topography by Stuart T. Penick, R. H. Reineck,  
A. O. Burkland, and R. R. Monbeck.  
Control by C. F. Urquhart, C. B. Kendall, R. R. Monbeck, and C. R. Fisher.  
Surveyed in 1914.  
SURVEYED IN COOPERATION WITH THE STATE OF OKLAHOMA.



1916 4 - 1916 3500  
Historical File  
Topographic Division  
KIEFER, Okla.