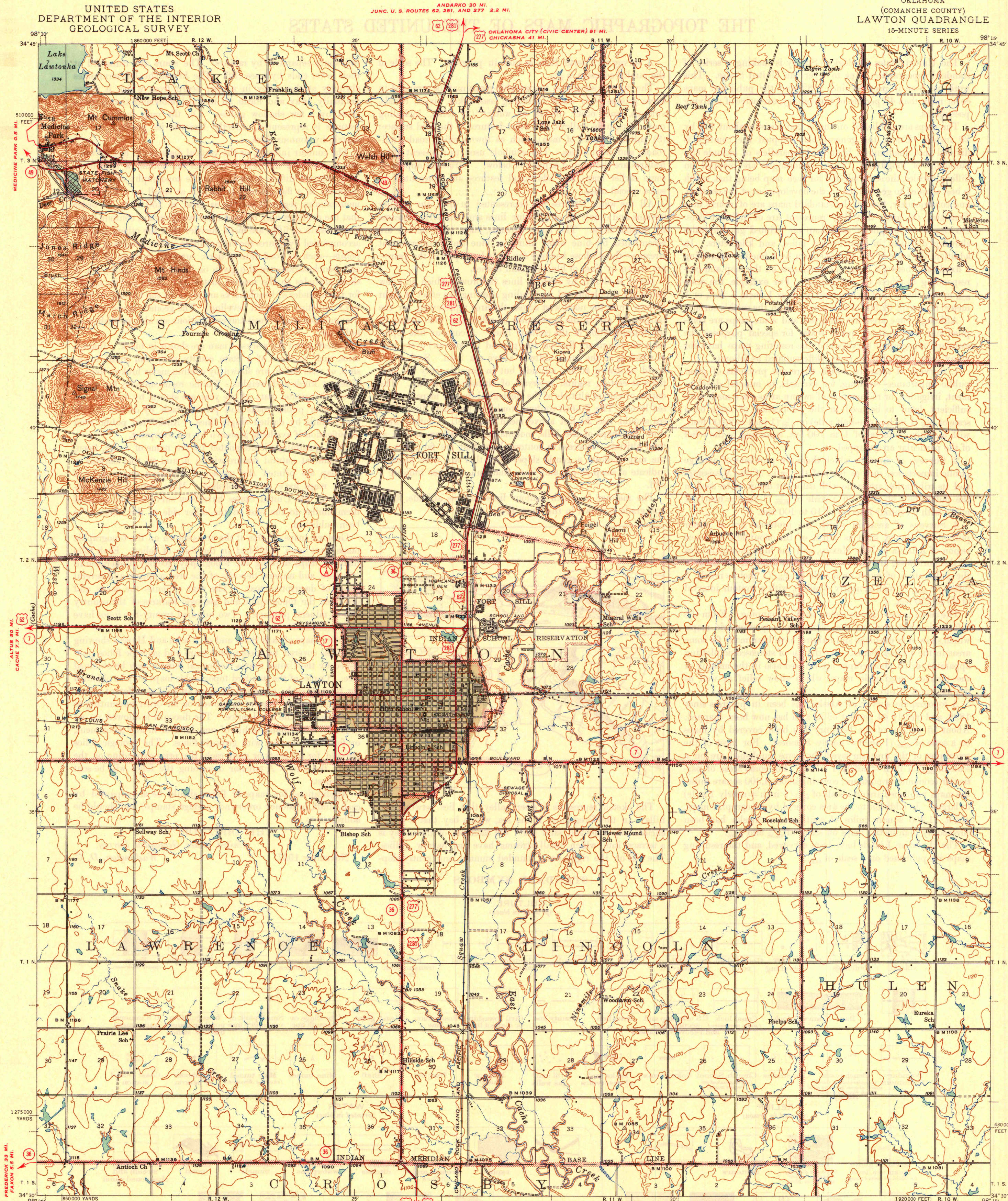


UNITED STATES  
DEPARTMENT OF THE INTERIOR  
GEOLOGICAL SURVEY

OKLAHOMA  
(COMANCHE COUNTY)  
LAWTON QUADRANGLE  
15-MINUTE SERIES



Mapped by the Geological Survey  
1944-1945

Gray tint indicates areas in which only  
landmark buildings are shown

APPROXIMATE MEAN  
DECLINATION, 1945

JUNC. STATE NO. 5 9.4 MI.  
WICHITA FALLS (CIVIC CENTER) 49 MI.

Scale 1:62,500

Contour interval 20 feet

Datum is mean sea level

ROAD CLASSIFICATION  
1946  
Dependable hard-surface  
heavy-duty road  
Secondary hard-surface  
all-weather road  
Dirt road  
More than two lanes indicated along road with tick at point of change  
U.S. Route 151  
Loose-surface graded  
Unsurfaced, graded  
State Route 151  
LAWTON, OKLA.  
Edition of 1946

Polyconic projection, 1927 North American datum  
5000 yard grid based on U. S. zone system, D  
10000 foot grid based on Oklahoma (South)  
rectangular coordinate system

N 3430-W 9815/15

"UNIVERSITY OF WISCONSIN"  
Department of Geography