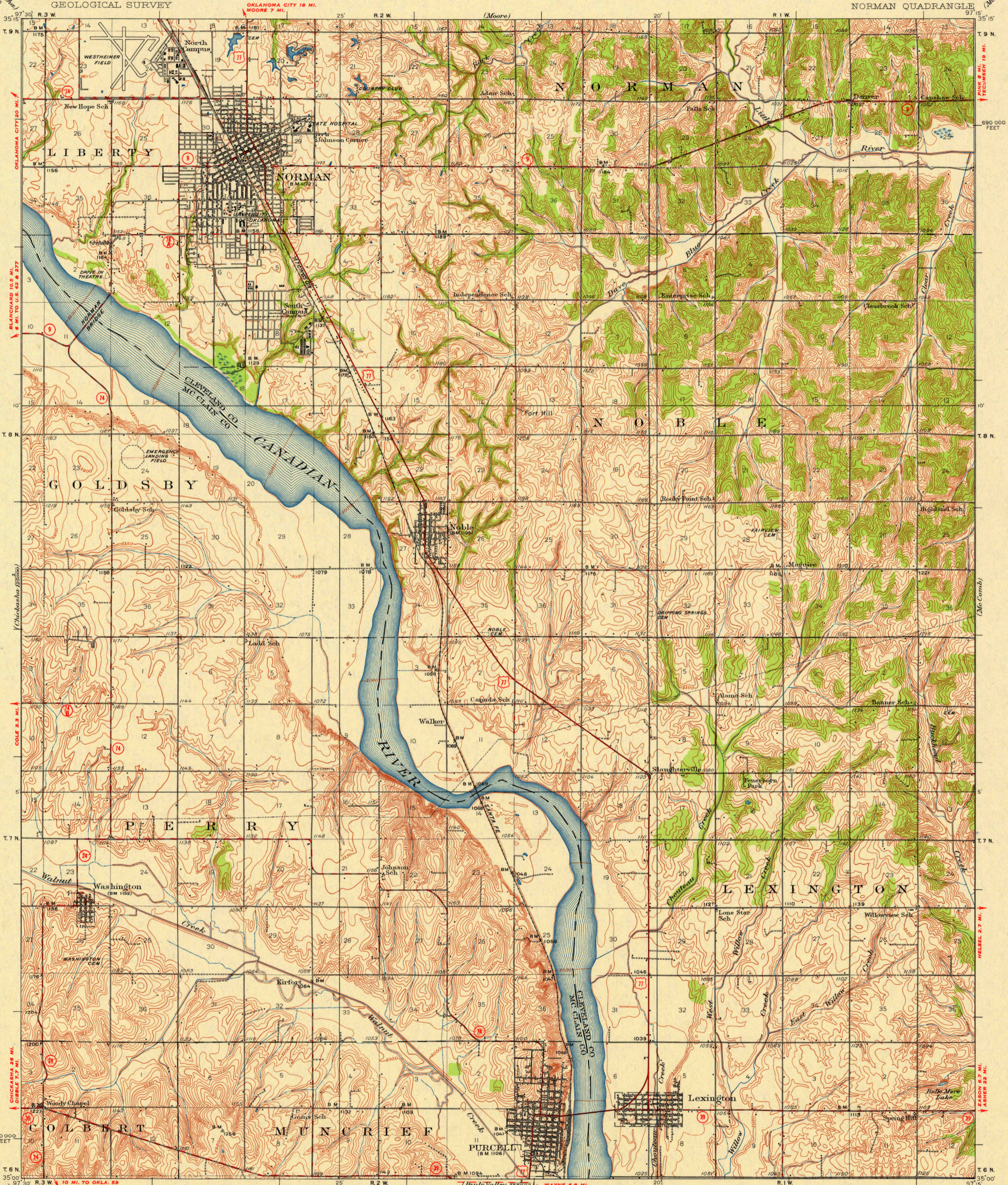


U.S.G.S.  
FILE COPY  
Inspection and Editing.

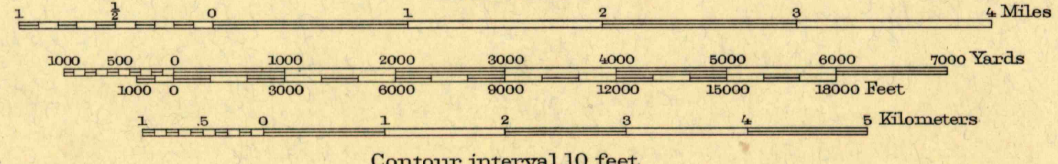
UNITED STATES  
DEPARTMENT OF THE INTERIOR  
GEOLOGICAL SURVEY

OKLAHOMA  
NORMAN QUADRANGLE



Topography by R. Muldrow, E.J. Fennell, H. Younkman, R.W. Blackburn, and J.C. Barcklow. Surveyed in 1933-1934. N.W. quarter surveyed in 1925 in cooperation with the University of Oklahoma. Revised in 1950. Only landmark buildings are shown within newly developed areas.

**ROAD CLASSIFICATION**  
HARD-SURFACE ALL WEATHER ROADS    DRY WEATHER ROADS  
Heavy-duty...    **LANE LANE** Improved dirt...  
Medium-duty...    **LANE LANE** Unimproved dirt...  
Loose-surface, graded, or narrow hard-surface...  
U. S. Route    State Route



FOR SALE BY U.S. GEOLOGICAL SURVEY, FEDERAL CENTER, DENVER, COLORADO OR WASHINGTON 25, D.C.  
A FOLDER DESCRIBING TOPOGRAPHIC MAPS AND SYMBOLS IS AVAILABLE ON REQUEST

USGS  
Historical File  
Topographic Division  
U.S.G.S.  
FILE COPY  
Inspection and Editing.

NORMAN, OKLA.  
Edition of 1936  
reprinted 1951  
with corrections  
N3500 - W9715/15