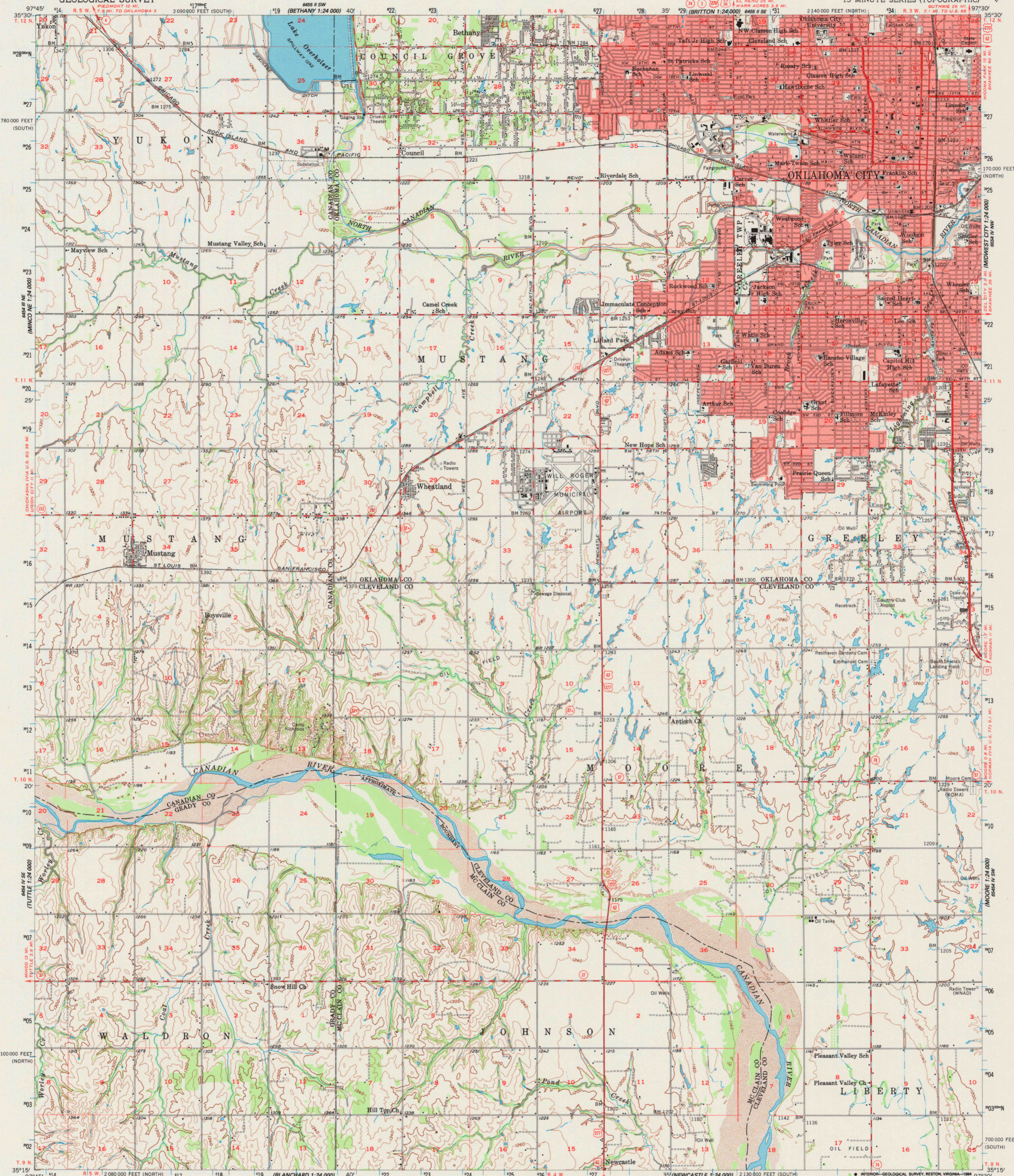
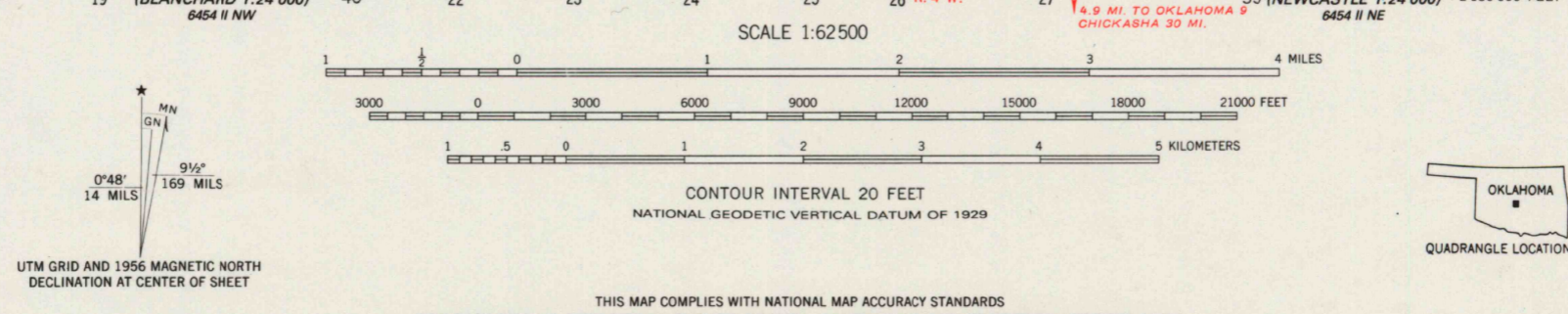


UNITED STATES  
DEPARTMENT OF THE INTERIOR  
GEOLOGICAL SURVEY

OKLAHOMA CITY QUADRANGLE  
OKLAHOMA  
15 MINUTE SERIES (TOPOGRAPHIC)



Mapped, edited, and published by the Geological Survey  
Control by USGS, USC&GS, and Oklahoma Geodetic Survey  
Topography from aerial photographs by photogrammetric methods  
Aerial photographs taken 1954. Field check 1956  
Polyconic projection. 1927 North American datum  
10,000-foot grids based on Oklahoma coordinate system,  
north and south zones  
1000-meter Universal Transverse Mercator grid ticks,  
zone 14, shown in blue  
To place on the predicted North American Datum 1983,  
move the projection lines 4 meters south and 29 meters east  
Red tint indicates areas in which only  
landmark buildings are shown



ROAD CLASSIFICATION  
Heavy-duty ——— Light-duty  
Medium-duty ——— Unimproved dirt - - - - -  
U.S. Route ——— State Route ———  
This area also covered by 7.5-minute, 1:24 000-scale  
maps: Mustang 1975, Oklahoma City 1975, Oklahoma City SW 1975,  
and Oklahoma City SE 1975  
**OKLAHOMA CITY, OKLA.**  
N 3515 — W 9730/15  
1956  
DMA 6454 I—SERIES V783

THIS MAP COMPLIES WITH NATIONAL MAP ACCURACY STANDARDS  
FOR SALE BY U. S. GEOLOGICAL SURVEY, DENVER, COLORADO 80225, OR RESTON, VIRGINIA 22089  
AND OKLAHOMA GEOLOGICAL SURVEY, NORMAN, OKLAHOMA 73069  
A FOLDER DESCRIBING TOPOGRAPHIC MAPS AND SYMBOLS IS AVAILABLE ON REQUEST

RETURN TO :  
USGS AND HISTORICAL MAP ARCHIVES