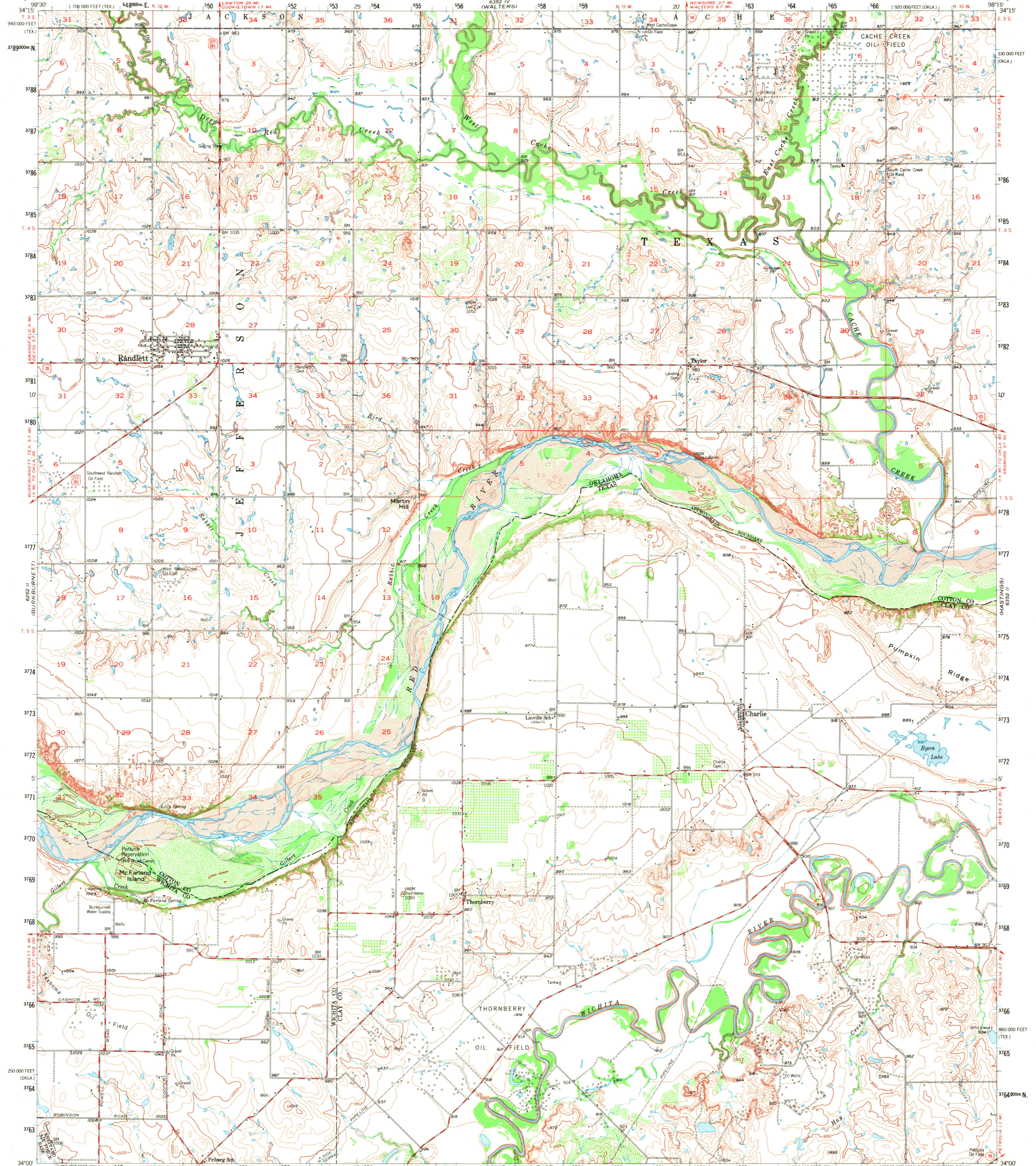
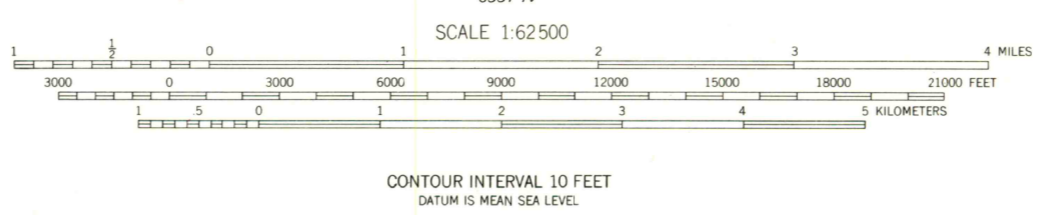


UNITED STATES
DEPARTMENT OF THE INTERIOR
GEOLOGICAL SURVEY

RANDLETT QUADRANGLE
OKLAHOMA-Texas
15 MINUTE SERIES (TOPOGRAPHIC)



Mapped, edited, and published by the Geological Survey
Control by USGS and USC&GS
Topography from aerial photographs by multiple methods
and by plane-table surveys 1957. Aerial photographs taken 1953
Polyconic projection. 1927 North American datum
10,000-foot grid based on Oklahoma coordinate system, south zone
and Texas coordinate system, north central zone
1000-meter Universal Transverse Mercator grid ticks,
zone 14, shown in blue



ROAD CLASSIFICATION
Medium-duty ——— Light-duty ———
Unimproved dirt - - - - -
U.S. Route ——— State Route ———



RANDLETT, OKLA.-TEX.
N3400-W9815/15
1957
AMS 6352 III-SERIES V783

RETURN TO:
MMD HISTORICAL MAP ARCHIVES
USGS NATIONAL CENTER,
RESTON, VA 22092

THIS MAP COMPLIES WITH NATIONAL MAP ACCURACY STANDARDS
FOR SALE BY U. S. GEOLOGICAL SURVEY, DENVER, COLORADO 80225 OR WASHINGTON, D. C. 20242
A FOLDER DESCRIBING TOPOGRAPHIC MAPS AND SYMBOLS IS AVAILABLE ON REQUEST