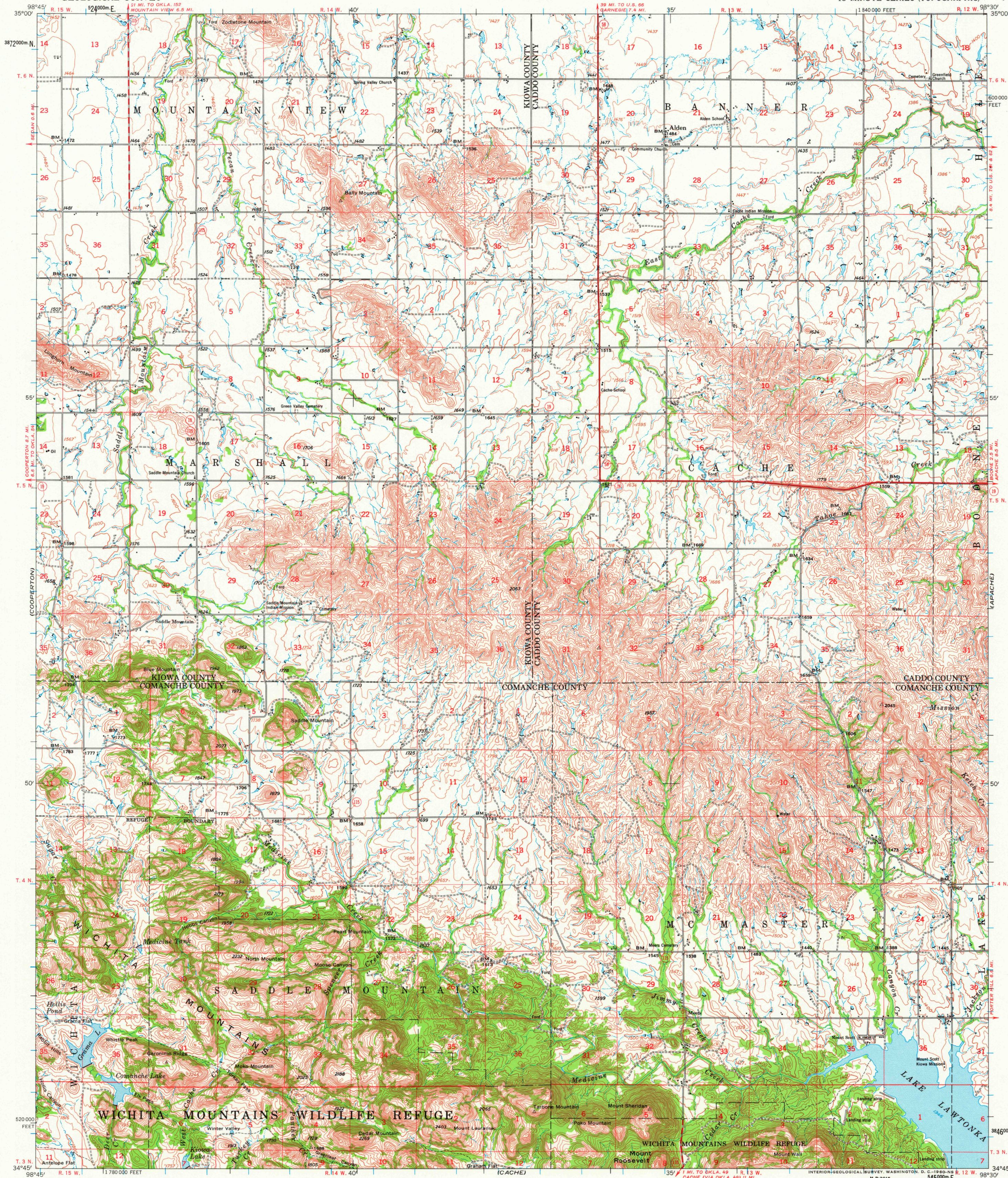
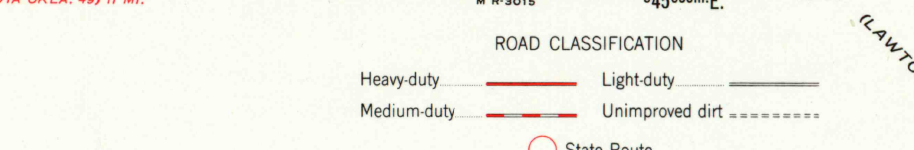
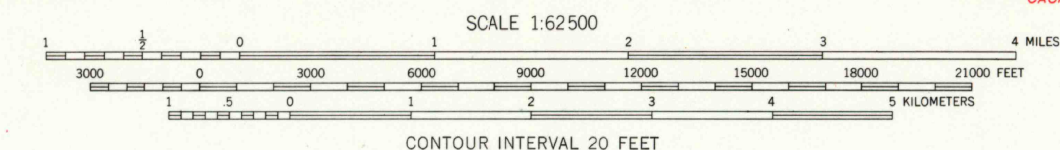


(FORT COBB)



Mapped by the Army Map Service  
Published for civil use by the Geological Survey  
Control by USGS, USC&GS, USCE, and Oklahoma Geodetic Survey  
Compiled by the Army Map Service from Alden, Bally Mountain,  
Saddle Mountain, and Meers 7.5-minute quadrangle maps,  
surveyed 1949, revised 1956  
Topography by photogrammetric methods from aerial photographs  
taken 1947. Culture and drainage revised from aerial  
photographs taken 1954. Field check 1956  
Polyconic projection. 1927 North American datum  
10,000-foot grid based on Oklahoma coordinate system, south zone  
1000-meter Universal Transverse Mercator grid ticks,  
zone 14, shown in blue  
Unchecked elevations are shown in brown



This area also covered by 1:24,000-scale maps of  
Alden, Bally Mountain, Saddle Mountain, and Meers  
7.5 minute quadrangles, surveyed 1956  
SADDLE MOUNTAIN, OKLA.  
N3445-W9830/15  
1956

THIS MAP COMPLIES WITH NATIONAL MAP ACCURACY STANDARDS  
FOR SALE BY U. S. GEOLOGICAL SURVEY, DENVER 25, COLORADO OR WASHINGTON 25, D. C.  
A FOLDER DESCRIBING TOPOGRAPHIC MAPS AND SYMBOLS IS AVAILABLE ON REQUEST

RETURN TO:  
NMD HISTORICAL MAP ARCHIVES  
USGS NATIONAL CENTER, MS-522  
RESTON, VA 22092