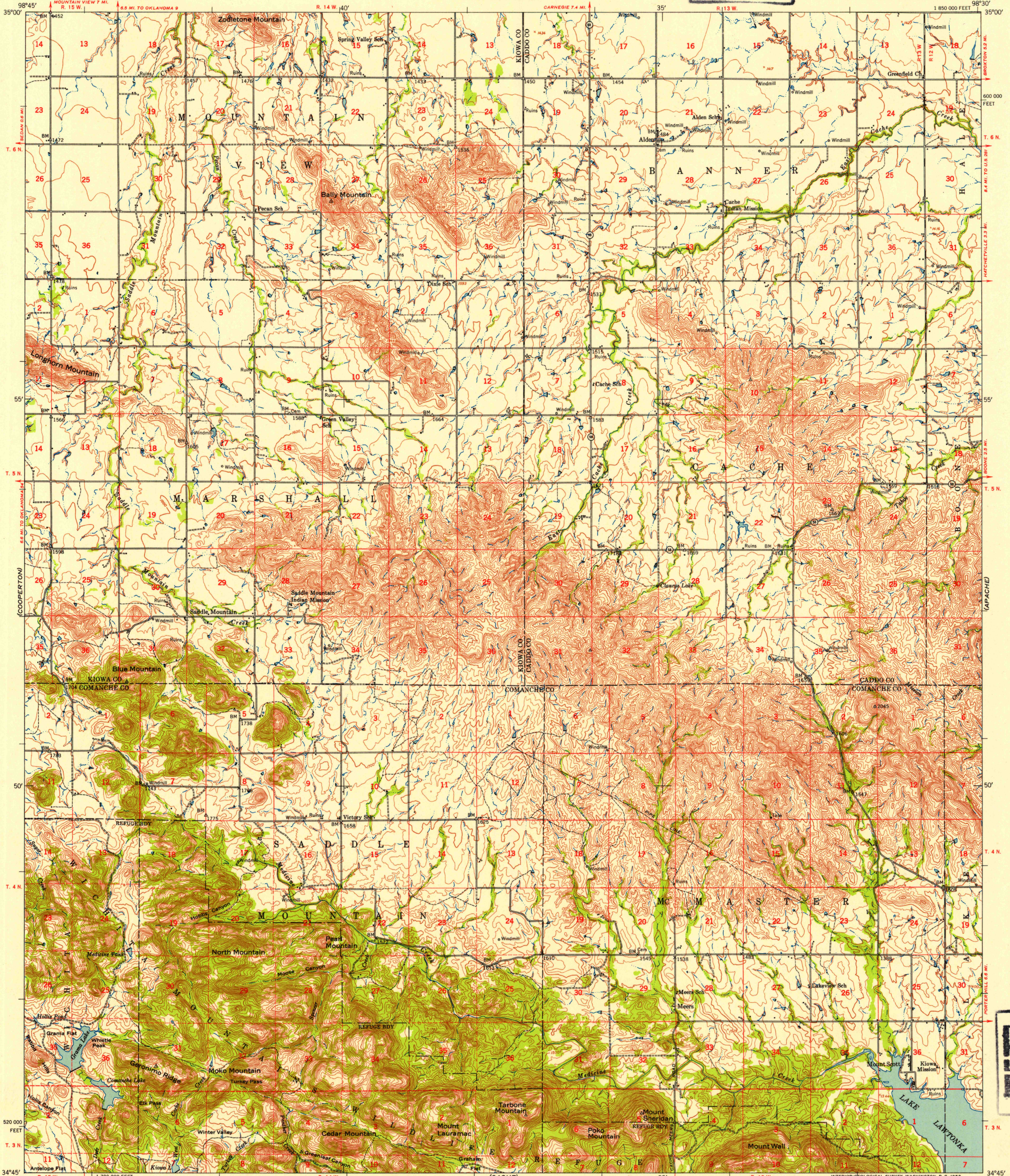
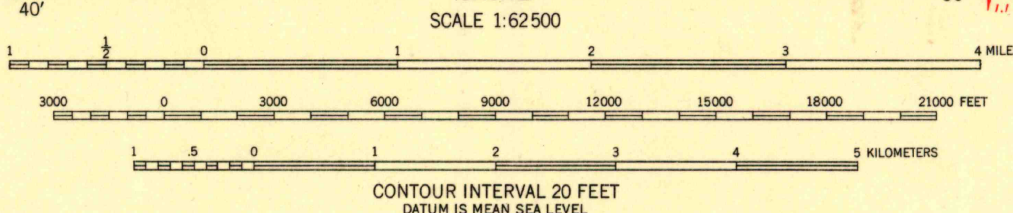


FILE COPY
Inspection and Filing



Mapped by the Army Map Service
Published for civil use by the Geological Survey
Control by USGS, USC&GS, USCE, and Oklahoma
Geodetic Survey
Topography from aerial photographs by multiplex methods
Aerial photographs taken 1947. Field check 1950
Polyconic projection. 1927 North American datum
10,000-foot grid based on Oklahoma coordinate system,
south zone
Unchecked elevations are shown in brown
Dashed land lines indicate approximate locations

TRUE NORTH
MAGNETIC NORTH
APPROXIMATE MEAN
DECLINATION, 1950



USGS
Historical File
Topographic Division

ROAD CLASSIFICATION
Heavy-duty 4 LANE 2 LANE Light-duty
Medium-duty 2 LANE 2 LANE Unimproved dirt
U. S. Route State Route

SADDLE MOUNTAIN, OKLA.
N3445-W9830/15
1950

THIS MAP COMPLIES WITH NATIONAL MAP ACCURACY STANDARDS
FOR SALE BY U. S. GEOLOGICAL SURVEY, FEDERAL CENTER, DENVER, COLORADO OR WASHINGTON 25, D. C.
A FOLDER DESCRIBING TOPOGRAPHIC MAPS AND SYMBOLS IS AVAILABLE ON REQUEST

FILE COPY
Inspection and Filing