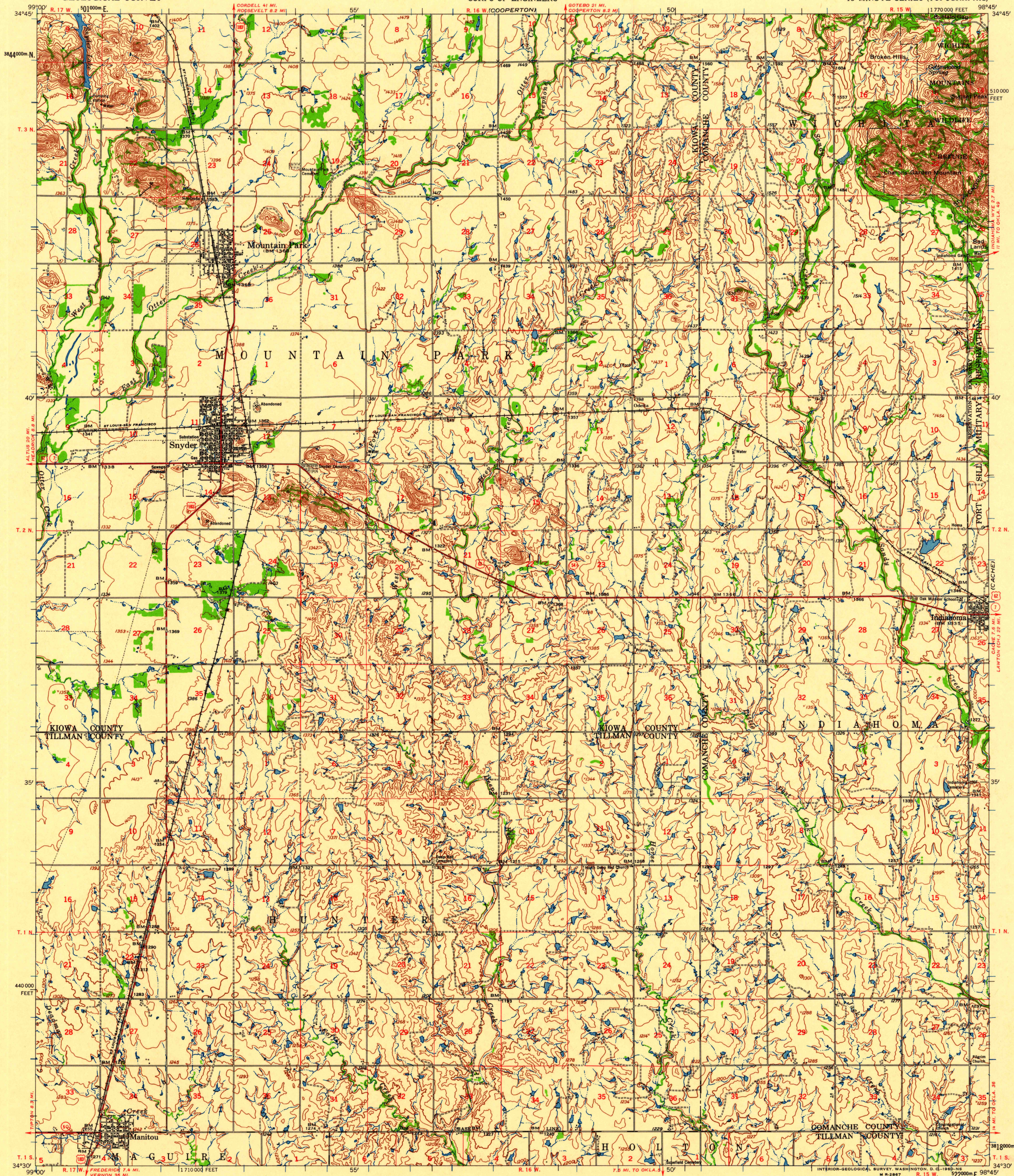
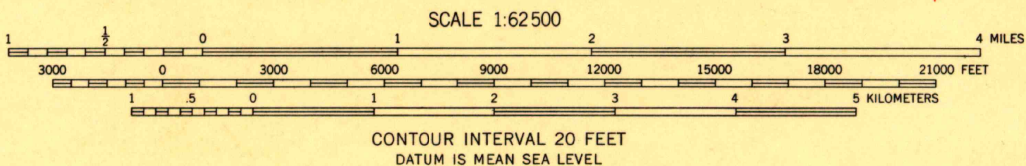


(SADDLE MOUNTAIN)



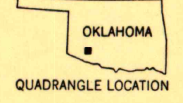
Map by the Army Map Service
Published for civil use by the Geological Survey
Control by USGS, USCGS, USCE, and Oklahoma Geodetic Survey
Compiled by the Army Map Service from Odessa, Snyder, Manitou,
and Indiahoma 7.5-minute quadrangle maps, surveyed 1949,
revised 1956
Topography by photogrammetric methods from aerial photographs
taken 1947-1948. Culture and drainage revised from aerial
photographs taken 1954. Field check 1956
Polyconic projection. 1927 North American datum
10,000-foot grid based on Oklahoma coordinate system, south zone
1000-meter Universal Transverse Mercator grid ticks,
zone 14, shown in blue
Unchecked elevations are shown in brown



USGS
Historical File
Topographic Division

ROAD CLASSIFICATION

Heavy-duty	Light-duty
Medium-duty	Unimproved dirt
U.S. Route	State Route



U.S.G.S.
FILE COPY
TOPOGRAPHIC DIVISION

SNYDER, OKLA.
N 3430-W 9845/15

JUN - 6 1960
1935

THIS MAP COMPLIES WITH NATIONAL MAP ACCURACY STANDARDS
FOR SALE BY U. S. GEOLOGICAL SURVEY, DENVER 25, COLORADO OR WASHINGTON 25, D. C.
A FOLDER DESCRIBING TOPOGRAPHIC MAPS AND SYMBOLS IS AVAILABLE ON REQUEST