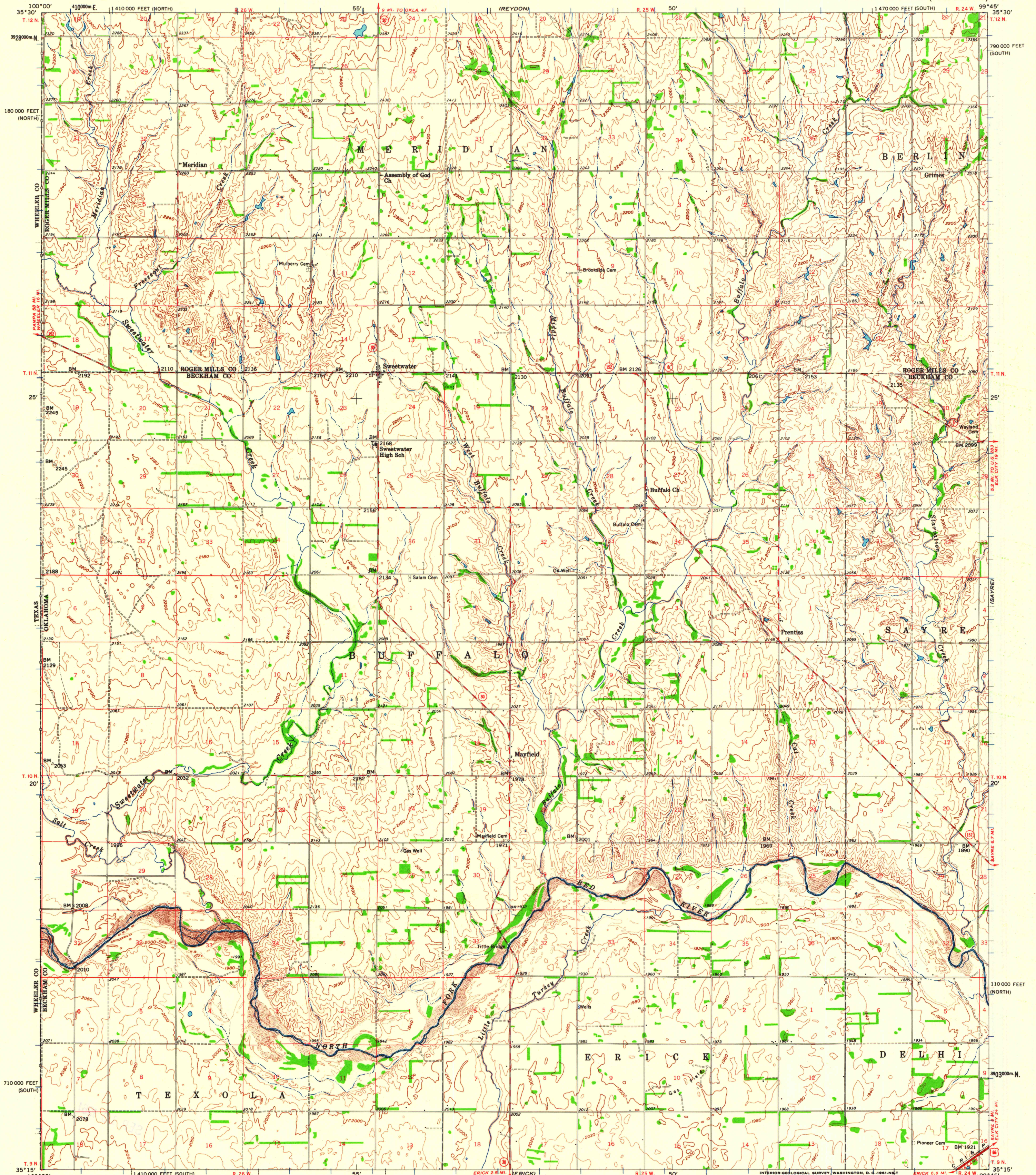
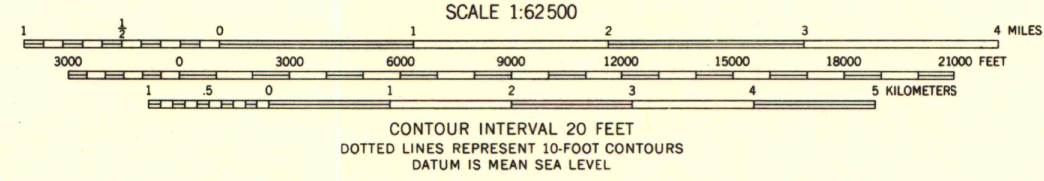
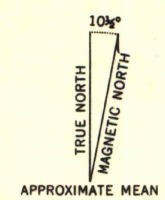


(WYOMING)



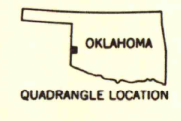
Mapped, edited, and published by the Geological Survey
Control by USGS, USC&GS, and Oklahoma Geological Survey
Topography from aerial photographs by photogrammetric methods
Aerial photographs taken 1958. Field check 1959-1960
Polyconic projection. 1927 North American datum
10,000-foot grids based on Oklahoma coordinate system,
north and south zones
1000 meter Universal Transverse Mercator grid ticks,
zone 14, shown in blue



ROAD CLASSIFICATION

Heavy-duty	Light-duty
Medium-duty	Unimproved dirt
U.S. Route	State Route

THIS MAP COMPLIES WITH NATIONAL MAP ACCURACY STANDARDS
FOR SALE BY U. S. GEOLOGICAL SURVEY, DENVER 25, COLORADO OR WASHINGTON 25, D. C.
A FOLDER DESCRIBING TOPOGRAPHIC MAPS AND SYMBOLS IS AVAILABLE ON REQUEST



SWEETWATER, OKLA.
N3515-W9945/15
1960

MAP AND AIR PHOTO LIBRARY
University of Wisconsin