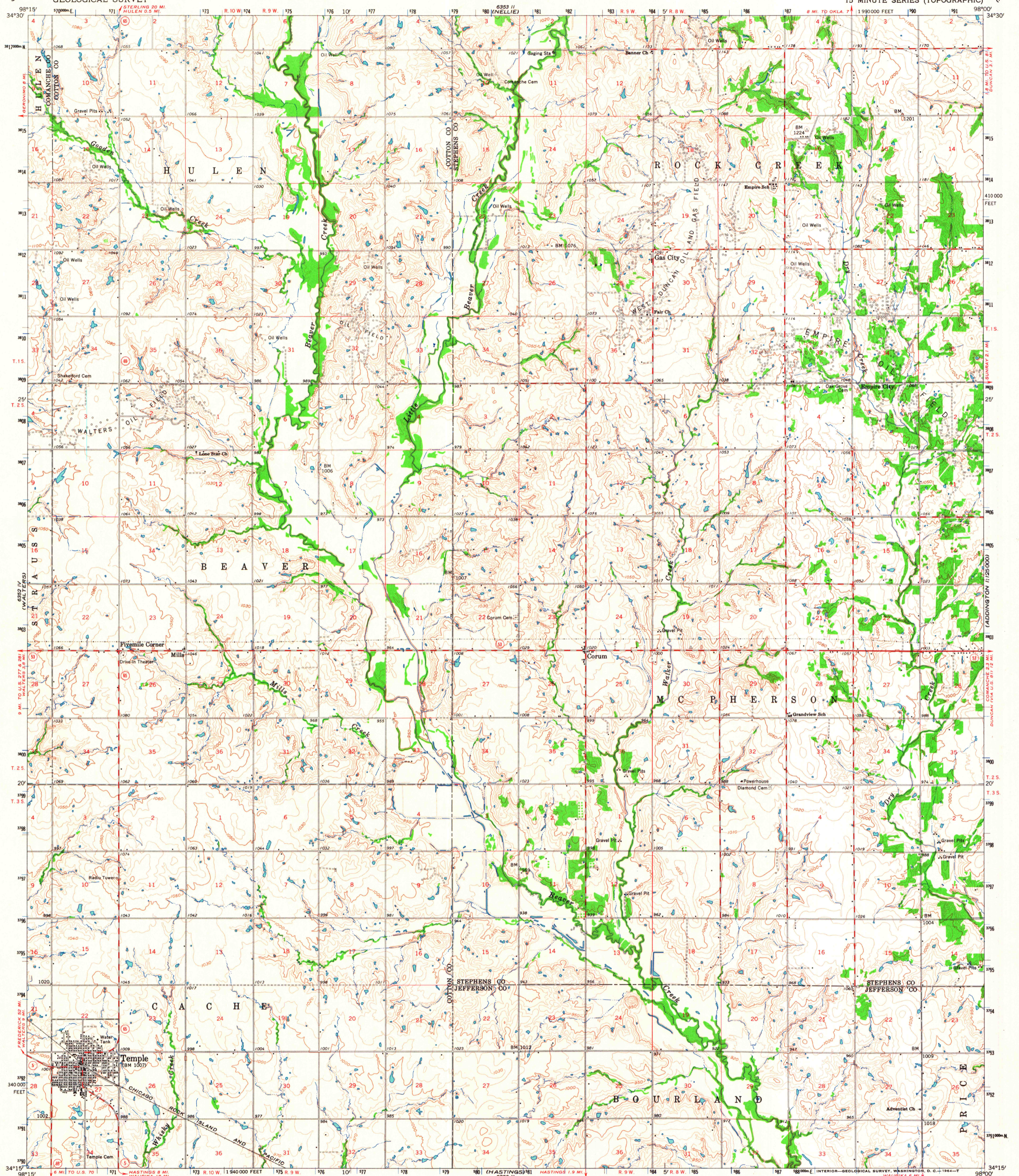
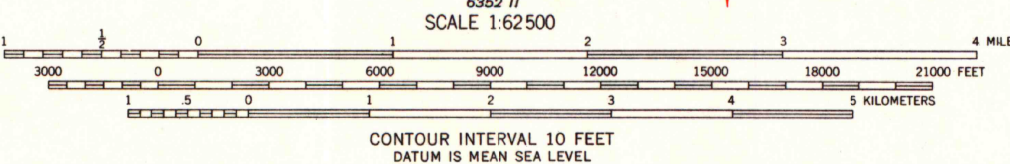


UNITED STATES  
DEPARTMENT OF THE INTERIOR  
GEOLOGICAL SURVEY

TEMPLE QUADRANGLE  
OKLAHOMA  
15 MINUTE SERIES (TOPOGRAPHIC)



Mapped, edited, and published by the Geological Survey  
Control by USGS, USC&GS, and Oklahoma Geological Survey  
Topography by photogrammetric methods from aerial  
photographs taken 1959-60. Field checked 1962  
Polyconic projection. 1927 North American datum  
100,000-foot grid based on Oklahoma coordinate system, south zone  
1000-meter Universal Transverse Mercator grid ticks,  
zone 14, shown in blue



ROAD CLASSIFICATION  
Heavy-duty ——— Light-duty ———  
Medium-duty ——— Unimproved dirt ———  
State Route ○



THIS MAP COMPLIES WITH NATIONAL MAP ACCURACY STANDARDS  
FOR SALE BY U. S. GEOLOGICAL SURVEY, DENVER 25, COLORADO OR WASHINGTON 25, D. C.  
A FOLDER DESCRIBING TOPOGRAPHIC MAPS AND SYMBOLS IS AVAILABLE ON REQUEST

MAP AND AIR PHOTO LIBRARY  
University of Wisconsin

TEMPLE, OKLA.  
N3415—W9800/15

1962  
AMS 6352 1-SERIES V783