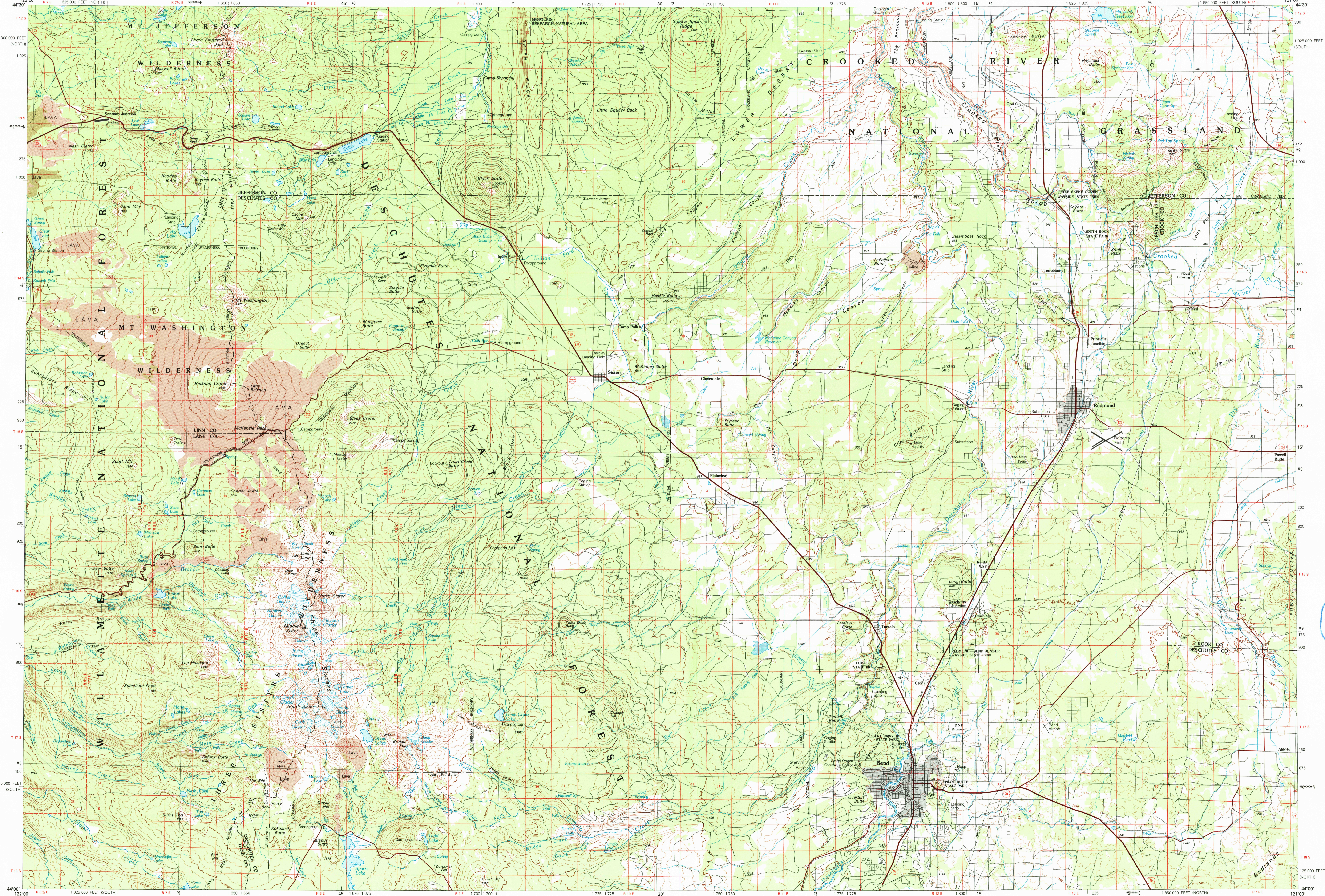


BEND, OREGON

30X60 MINUTE SERIES (TOPOGRAPHIC)



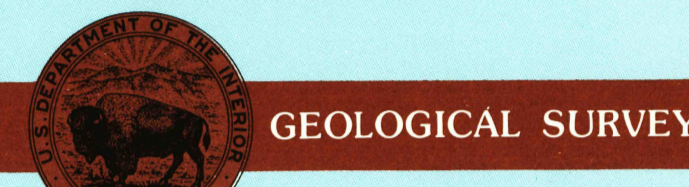
Bend OREGON

1:100 000-scale metric topographic map



30 X 60 MINUTE QUADRANGLE SHOWING

- Contours and elevations in meters
- Highways, roads and other manmade structures
- Water features
- Woodland areas
- Geographic names



GEOLOGICAL SURVEY

1980 PHOTINSPECTED 1991

Produced by the United States Geological Survey
 Compiled from USGS 1:24 000 and 1:62 500-scale topographic maps dated 1959-75. Planimetry revised from aerial photographs taken 1978 and other source data. Revised information not field checked. Map edited 1980

1927 North American Datum (NAD 27). Projection and 10 000-meter grid. Universal Transverse Mercator, zone 10 25 000-foot ticks. Oregon coordinate system, south and north zone

The difference between NAD 27 and North American Datum of 1983 (NAD 83) is too small to show at this scale. The values of the shift between the datums for 7.5-minute intersections are given in USGS Bulletin 1875

There may be private inholdings within the boundaries of the National or State reservations shown on this map

Protracted land lines are dashed
 Map photinspected using 1990-91 photographs
 No major culture or drainage changes found

CONTOUR INTERVAL 40 METERS
 SUPPLEMENTARY CONTOUR INTERVAL 10 METERS
 NATIONAL GEODETIC DATUM OF 1929

Meters	Feet
1	3.2808
2	6.5617
3	9.8425
4	13.1232
5	16.4040
6	19.6848
7	22.9656
8	26.2464
9	29.5272
10	32.8080

To convert meters to feet multiply by 3.2808
 To convert feet to meters multiply by 0.3048

DECLINATION DIAGRAM	ADJOINING MAPS
	1 North Santiam River 2 Madras 3 Stephen Mountain 4 McKenzie River 5 Clatskanie 6 Oakridge 7 LaGrange 8 Brothers

UTM grid convergence (GN) and 1983 magnetic declination (MD) at center of map
 Diagram is approximate

FOR SALE BY U. S. GEOLOGICAL SURVEY, DENVER, COLORADO 80225 OR RESTON, VIRGINIA 22092



Topographic Map Symbols

- Primary highway, hard surface
- Secondary highway, hard surface
- Light duty road, principal street, hard or improved surface
- Other road or street; trail
- Route marker: Interstate; U. S. State
- Railroad: standard gage; narrow gage
- Bridge: overpass; underpass
- Tunnel: road; railroad
- Built up area, locality, elevation
- Airport, landing field; landing strip
- National boundary
- State boundary
- County boundary
- National or State reservation boundary
- Land grant boundary
- U. S. public lands survey: range, township, section
- Range, township, section line: protected
- Power transmission line, pipeline
- Dam; dam with lock
- Cemetery; building
- Windmill; water well; spring
- Mine shaft; adit or cave; mine quarry; gravel pit
- Campground; picnic area; U. S. location monument
- Ruins; cliff dwelling
- Distorted surface: strip mine, lava, sand
- Contours: index; intermediate; supplementary
- Bathymetric contours: index; intermediate
- Stream, lake, perennial; intermittent
- Rancho, large and small; lake, large and small
- Area to be submerged; marsh, swamps
- Land subject to controlled inundation; woodland
- Scrub; mangrove
- Orchard; vineyard