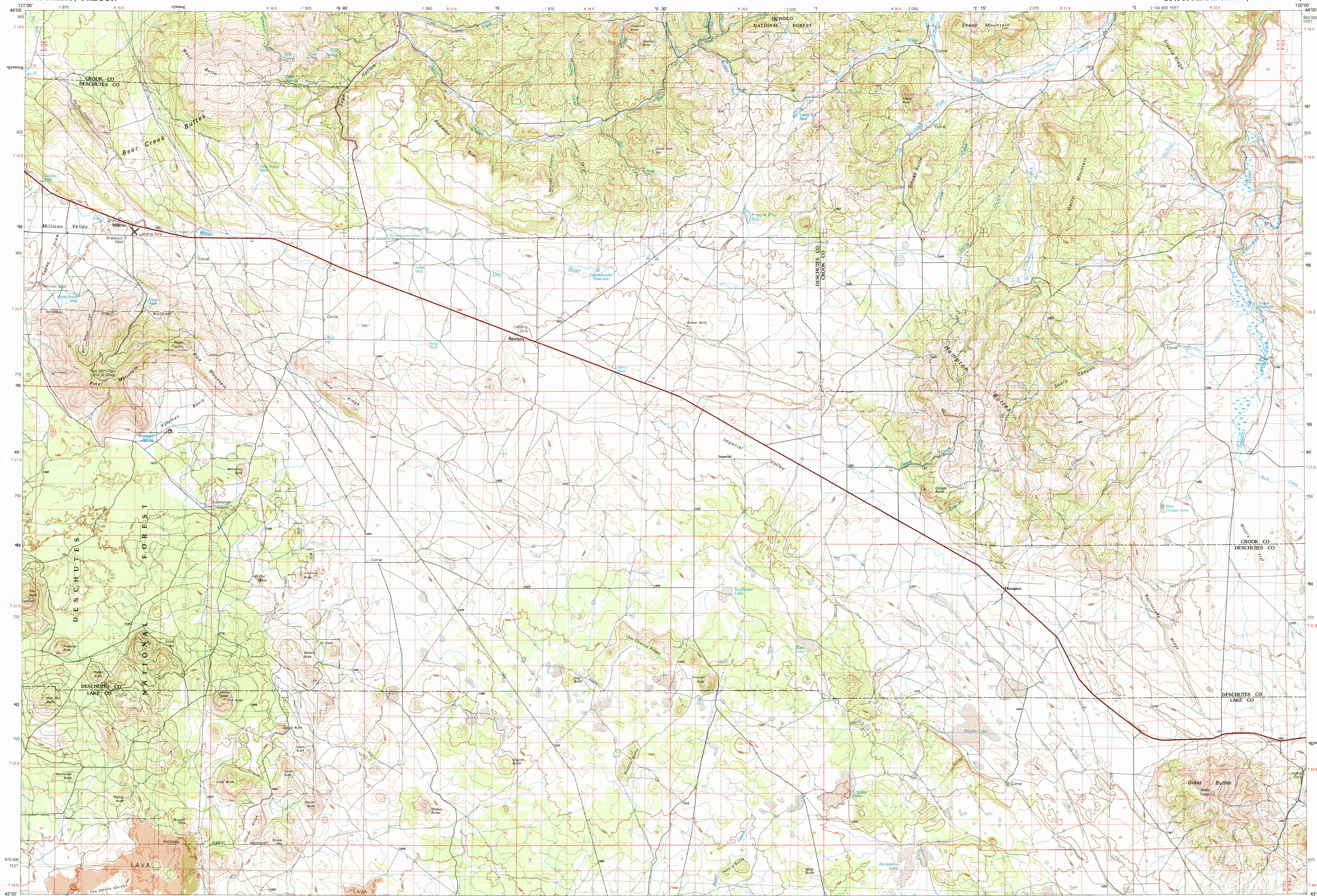


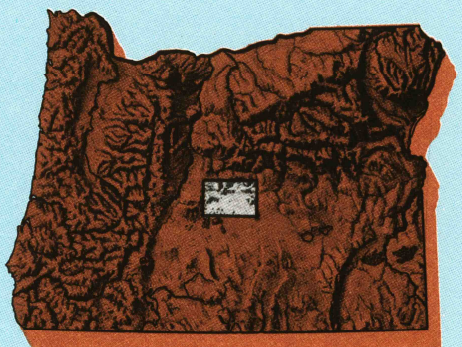
BROTHERS, OREGON

30 X 60 MINUTE SERIES (TOPOGRAPHIC)



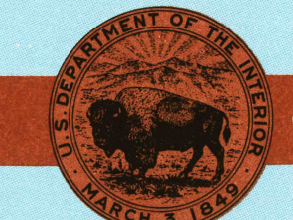
Brothers OREGON

1:100 000-scale metric topographic map of



30 X 60 MINUTE QUADRANGLE SHOWING

- Contours and elevations in meters
- Highways, roads and other manmade structures
- Water features
- Woodland areas
- Geographic names



GEOLOGICAL SURVEY

1983 PHOTOINSPECTED 1991

Produced by the United States Geological Survey  
 Compiled from USGS 1:24 000-scale topographic maps dated 1966-1983. Map edited 1983  
 North American Datum of 1927 (NAD 27). Projection and 10 000-meter grid: Universal Transverse Mercator, zone 10 25 000-foot ticks: Oregon coordinate system, south zone.  
 The values of the shift between NAD 27 and North American Datum of 1983 (NAD 83) for 7.5-minute intersections are obtainable from National Geodetic Survey NADCON software.  
 There may be private inholdings within the boundaries of the National or State reservations shown on this map.  
 Map photospectored using 1991 photographs.  
 No major culture or drainage changes found.

CONTOUR INTERVAL 20 METERS  
 NATIONAL GEODETIC VERTICAL DATUM OF 1929  
 ELEVATIONS SHOWN TO THE NEAREST METER

THIS MAP COMPLIES WITH NATIONAL MAP ACCURACY STANDARDS

Meters	Feet
1	3.2808
2	6.5617
3	9.8425
4	13.1234
5	16.4042
6	19.6850
7	22.9659
8	26.2467
9	29.5275
10	32.8084

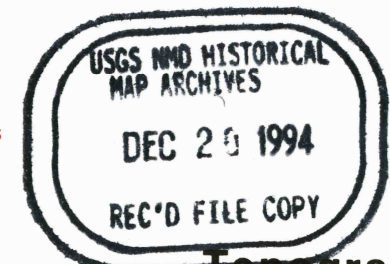
To convert meters to feet multiply by 3.2808  
 To convert feet to meters multiply by 0.3048

Declination	Miles
1'	18"
2'	36"
3'	54"
4'	72"
5'	90"
6'	108"
7'	126"
8'	144"
9'	162"
10'	180"

UTM grid convergence, 1983 and 1985 magnetic declination (MD) at center of map. Diagram is approximate.

Adjoining Maps	1	2	3
1	Bond		
2	Prineville		
3	Deville		
4	La Pine		
5	Burns		
6	Crescent		
7	Christmas Valley		
8	Harney Lake		

FOR SALE BY U. S. GEOLOGICAL SURVEY, DENVER, COLORADO 80225 OR RESTON, VIRGINIA 22092



Topographic Map Symbols

- Primary highway, hard surface
- Secondary highway, hard surface
- Light duty road, principal street, hard or improved surface
- Other road or street, trail
- Route marker, Interstate, U. S. State
- Railroad: standard gage; narrow gage
- Bridges: overpass; underpass
- Tunnel: road; railroad
- Built up area, locality, elevation
- Airport; landing field; landing strip
- National boundary
- State boundary
- County boundary
- National or State reservation boundary
- Land grant boundary
- U. S. public lands survey: range, township, section
- Range, township, section line: protracted
- Power transmission line, pipeline
- Dam; dam with lock
- Cemetery; building
- Windmill; water well; spring
- Mine shaft; adit or cave; mine, quarry; gravel pit
- Campground; picnic area; U. S. location monument
- Ruins, cliff dwelling
- Distorted surface: strip, mica, lava, sand
- Contours: index; intermediate; supplementary
- Bathymetric contours: index; intermediate
- Stream, lake: perennial; intermittent
- Rapids, large and small; falls, large and small
- Area to be submerged; marsh, swamp
- Land subject to controlled inundation; woodland
- Scrub; mangrove
- Orchard; vineyard

A pamphlet describing topographic maps is available on request