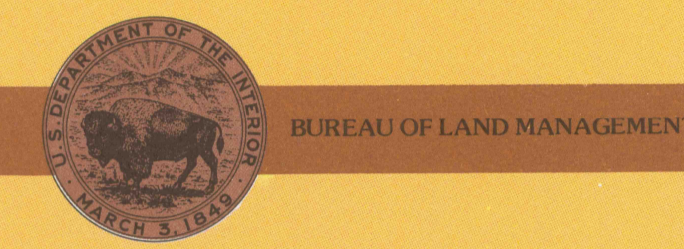




30 X 60 MINUTE QUADRANGLE SHOWING

- Contours and elevations in meters
- Highways, roads and other manmade structures
- Water features
- Geographic names



Edited and published by the Bureau of Land Management

Base map prepared by the U.S. Geological Survey
 Compiled from USGS 1:24 000 and 1:62 500-scale topographic maps dated 1956-1975. Planimetry revised from aerial photographs taken 1975 and other source data. Revised information not field checked. Map edited 1990.
 Projection and 10 000-meter grid, zone 10, Universal Transverse Mercator
 25 000-foot grid ticks based on Oregon coordinate system, south and north zones
 1927 North American Datum
 To place on the predicted North American Datum 1983 move the projection lines 23 meters north and 96 meters east

NATIONAL GEODETIC VERTICAL DATUM OF 1929

THIS MAP COMPLES WITH NATIONAL MAP ACCURACY STANDARDS

CONVERSION TABLE		DECLINATION DIAGRAM		ADJOINING MAPS	
Meters	Feet	1	2	3	4
1	3.2808	1	2	3	4
2	6.5617	5	6	7	8
3	9.8425				
4	13.1234				
5	16.4042				
6	19.6850				
7	22.9659				
8	26.2467				
9	29.5275				
10	32.8084				

UTM grid coverage (GN and 180 magnetic declination (M)) at center of map
 Diagram in approximate

To convert meters to feet multiply by 3.2808
 To convert feet to meters multiply by 0.3048

1 Newport
 2 Corvallis
 3 North Santiam River
 4 Madras
 5 McKenzie River
 6 Hoodport
 7 Cottage Grove
 8 Chalmers

FOR SALE BY U.S. GEOLOGICAL SURVEY, DENVER, COLORADO 80225
 and
 BLM STATE OFFICE
 PORTLAND, OR 97208

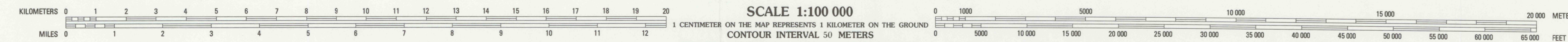
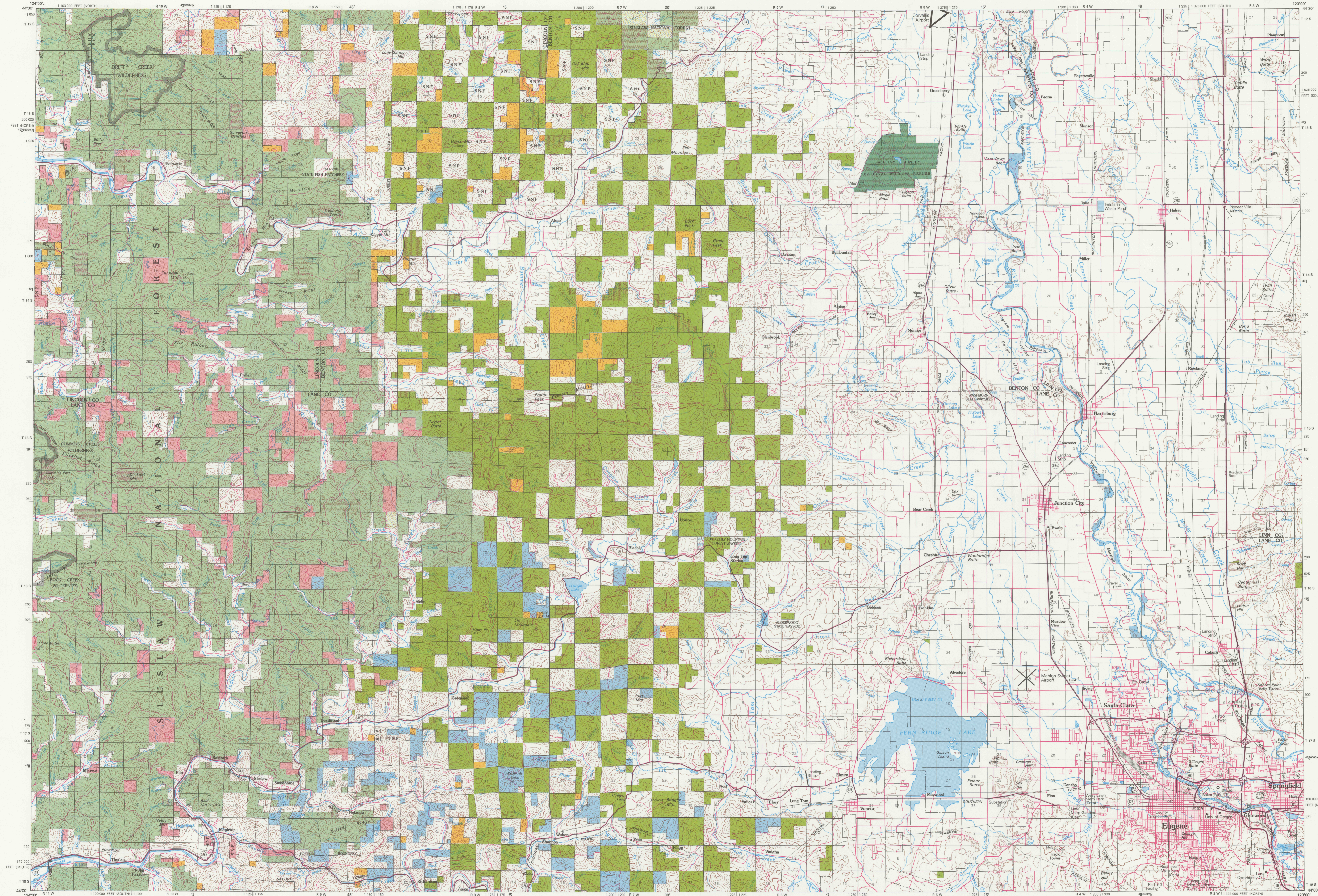
Topographic Map Symbols

Primary highway, hard surface	Secondary highway, hard surface	Light duty road, principal street, hard or improved surface	Other road or street, trail	Road marker, Interstate, U. S., State	Railroad, standard gage, narrow gage	Bridge, overpass, underpass	Tunnel, road, railroad	Ball up area, beach, elevation	Aspect, landing, field, landing strip	National boundary	County boundary	National or State reservation boundary	Land grant boundary	U. S. public lands survey, range, township, section	Range, township, section line, protruded	Power transmission line, pipeline	Dam, dam with lock, dam, landing strip	Cemetery, building	Windmill, water well, spring	Mine shaft, adit or cave, mine, quarry, gravel pit	Campground, picnic area, U. S. location monument	Race, dirt, gravel	Distorted surface, strip mine, levee, sand	Contours, index, intermediate, supplementary	Bathymetric contours, index, intermediate	Stream, lake, reservoir, intermittent	Rapids, large and small, falls, large and small	Area to be submerged, marsh, swamp	Land subject to controlled inundation
-------------------------------	---------------------------------	---	-----------------------------	---------------------------------------	--------------------------------------	-----------------------------	------------------------	--------------------------------	---------------------------------------	-------------------	-----------------	--	---------------------	---	--	-----------------------------------	--	--------------------	------------------------------	--	--	--------------------	--	--	---	---------------------------------------	---	------------------------------------	---------------------------------------

NOTE TO MAP USERS
 The surface and minerals management status overprints are published as general planning and management tools. Some of the lands, surface and mineral rights, may have been shown as patented lands in the field of information available to BLM with respect to the status of location. Tracts less than 40 acres are usually omitted because of the map scale. Access through private lands may be restricted. This official land records in the respective office of the Bureau of Land Management or other responsible Federal agencies should be checked for up-to-date status on any specific tract of land. Inquiries in the BLM maps should be reported to the respective Bureau of Land Management office from which the maps were obtained.

EUGENE, OREGON

30X60 MINUTE SERIES (TOPOGRAPHIC)



BUREAU OF LAND MANAGEMENT LAND STATUS LEGEND

Public Lands (Administered By Bureau of Land Management)	National Parks and Monuments	Bankhead-Jones Land Use Labs (L.U. Lands)	Bureau of Reclamation	Department of Energy (DOE)	State, County, City, Wildlife, Park and Outdoor Recreation Areas
Oregon & California Lands (O&C Lands) Coon Bay Wagon Road (CBWR)	Indian Lands or Reservations	Tennessee Valley Authority	Power Withdrawals and Classifications	Oregon & California Lands (O&C Lands) Administered by US Forest Service	Acquired Lands (By Administering Agency)
National Forest	Military Reservations and Withdrawals	Patented Lands	Federal Agency Protective Withdrawals	Radio & Air Facilities	Miscellaneous
National Grasslands	Wildlife Refuges	State Lands	Public Water Reserves		

FEB 1993