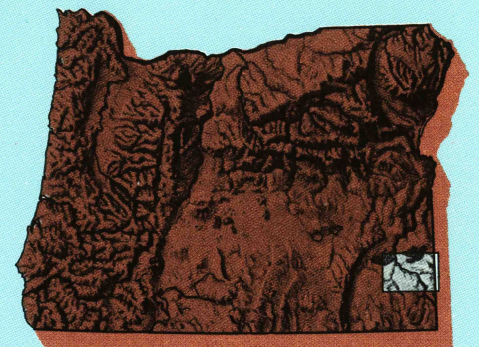


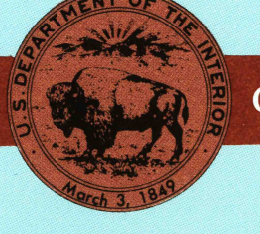
Jordan Valley

OREGON-IDAHO
1:100 000-scale metric
topographic map

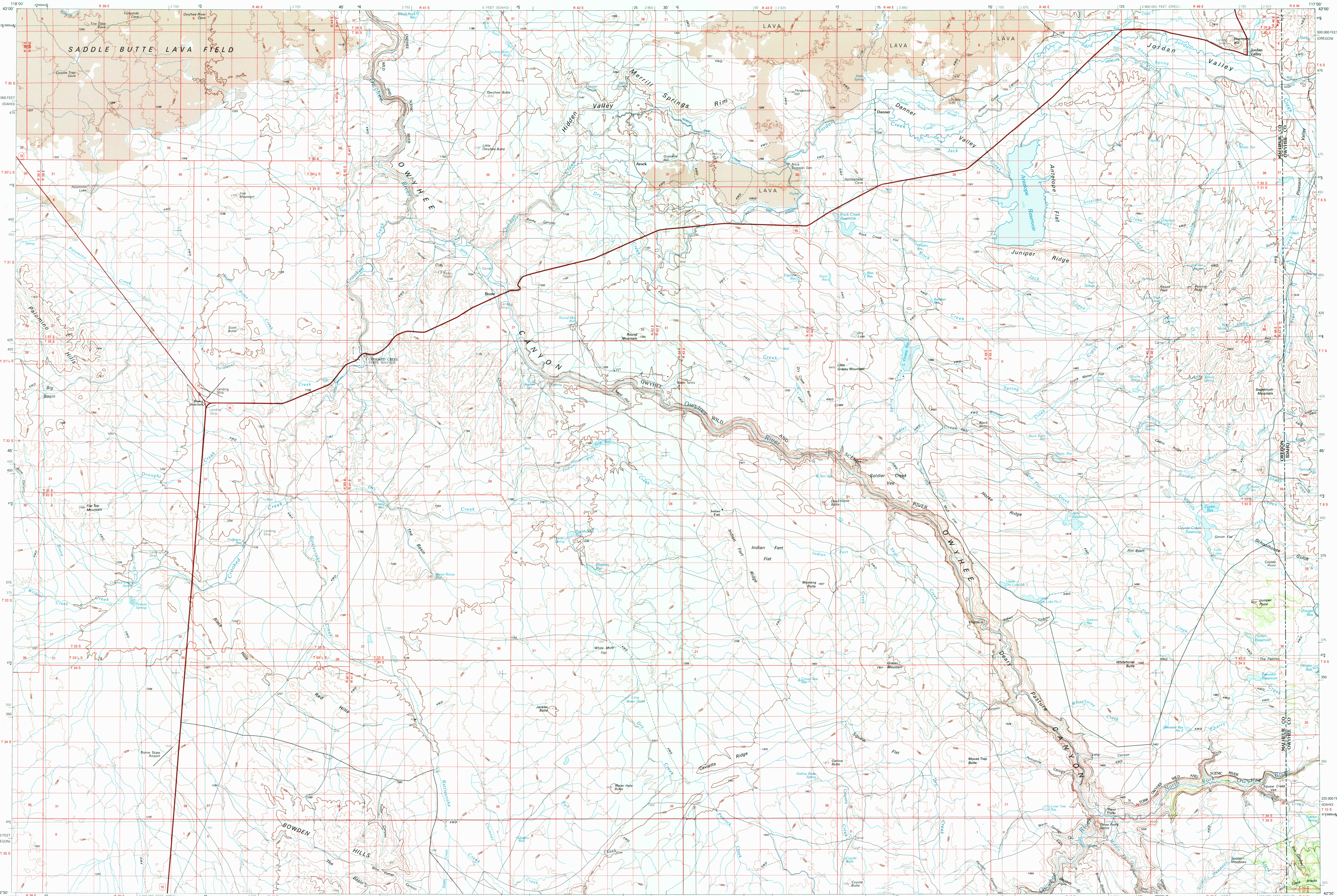


30 X 60 MINUTE QUADRANGLE SHOWING

- Contours and elevations in meters
- Highways, roads and other manmade structures
- Water features
- Woodland areas
- Geographic names



GEOLOGICAL SURVEY
1994



Produced by the United States Geological Survey
 Compiled from USGS 1:24 000-scale topographic maps dated 1969-1980. Planimetry revised from aerial photographs taken 1992 and other source data. Revised information not field checked. Map edited 1994.
 North American Datum of 1927 (NAD 27). Projection and 10 000-meter grid: Universal Transverse Mercator, zone 11 25 000-foot ticks: Oregon coordinate system south zone and Idaho coordinate system, west zone
 The values of the shift between NAD 27 and North American Datum of 1983 (NAD 83) for 7.5-minute intersections are obtainable from National Geodetic Survey NADCON software.
 There may be private inholdings within the boundaries of the National or State reservations shown on this map.

CONTOUR INTERVAL 40 METERS
 SUPPLEMENTARY CONTOUR INTERVAL 20 METERS
 NATIONAL GEODETIC DATUM OF 1929
 ELEVATIONS SHOWN TO THE NEAREST METER

THIS MAP COMPLIES WITH NATIONAL MAP ACCURACY STANDARDS
 FOR SALE BY U.S. GEOLOGICAL SURVEY,
 P.O. BOX 25286, DENVER, COLORADO, 80225

CONVERSION TABLE		DECLINATION DIAGRAM		ADJOINING MAPS		
Meters	Feet	Miles		1	2	3
1	3.2808	0° 00'		4	5	
2	6.5617	15° 00'		6	7	8
3	9.8425	30° 00'				
4	13.1234	45° 00'				
5	16.4042	60° 00'				
6	19.6850	75° 00'				
7	22.9659	90° 00'				
8	26.2467					
9	29.5275					
10	32.8084					

To convert meters to feet multiply by 3.2808
 To convert feet to meters multiply by 0.3048
 UTM grid convergence (GM) and 1984 magnetic declination (MD) at center of map. Diagram is approximate.

ISBN 0-607-45965-4
 RECEIVED
 MAR 31 2001
 RECEIVED
 MAR 31 2001

Topographic Map Symbols

Primary highway, hard surface	
Secondary highway, hard surface	
Light duty road, principal street, hard or improved surface	
Other road or street, trail	
Route marker: interstate; U. S.; State	
Railroad: standard gage; narrow gage	
Bridge; overpass; underpass	
Tunnel: road; railroad	
Built up area; locality; elevation	
Airport; landing field; landing strip	
National boundary	
State boundary	
County boundary	
National or State reservation boundary	
Land grant boundary	
U. S. public lands survey: range, township, section	
Range, township, section line: protected	
Power transmission line: pipeline	
Dam; dam with lock	
Cemetery; building	
Windmill; water well; spring	
Mine shaft; adit or cave; mine, quarry; gravel pit	
Campground; picnic area; U. S. location monument	
Ruins; cliff dwelling	
Disturbed surface: strip mine, lava, sand	
Contours: index, intermediate, supplementary	
Bathymetric contours: index, intermediate	
Stream, lake: perennial, intermittent	
Rapids, large and small; falls, large and small	
Area to be submerged; marsh, swamp	
Land subject to controlled inundation; woodland	
Scrub; mangrove	
Orchard; vineyard	