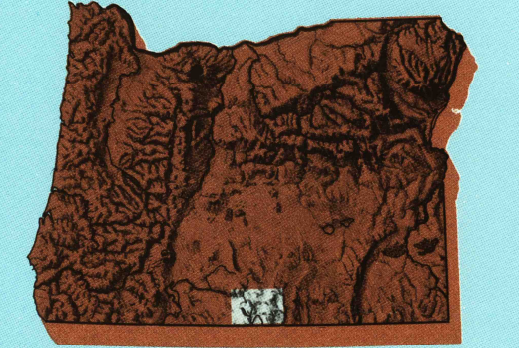


LAKEVIEW, OREGON

30 X 60 MINUTE SERIES (TOPOGRAPHIC)

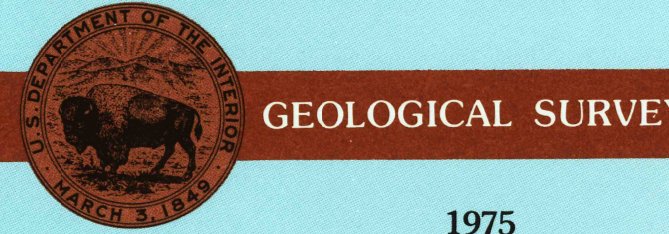
Lakeview OREGON

1:100 000-scale metric topographic map



30 X 60 MINUTE QUADRANGLE SHOWING

- Contours and elevations in meters
- Highways, roads and other manmade structures
- Water features
- Woodland areas
- Geographic names



1975 PHOTOINSPECTED 1990

Produced by the United States Geological Survey
 Compiled from USGS 1:24 000- and 1:62 500-scale topographic maps dated 1960-1968. Planimetry revised from aerial photographs taken 1975 and other source data. Revised information not field checked. Map edited 1975
 North American Datum of 1927 (NAD 27). Projection and 10 000-meter grid: Universal Transverse Mercator, zone 10 25 000-foot ticks: Oregon coordinate system, south zone
 The values of the shift between NAD 27 and North American Datum of 1983 (NAD 83) for 7.5-minute intersections are obtainable from National Geodetic Survey NADCON software
 There may be private inholdings within the boundaries of the National or State reservations shown on this map
 Map photoinspected using 1990 photographs
 No major culture or drainage changes found

CONTOUR INTERVAL 50 METERS
 NATIONAL GEODETIC VERTICAL DATUM OF 1929
 ELEVATIONS SHOWN TO THE NEAREST METER

THIS MAP COMPLIES WITH NATIONAL MAP ACCURACY STANDARD

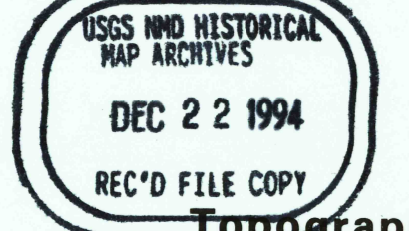
CONVERSION TABLE		DECLINATION DIAGRAM		ADJOINING MAPS		
Meters	Feet	GN	M	1	2	3
1	3.2808		13.30'	1	2	3
2	6.5617			4	5	6
3	9.8425			7	8	
4	13.1234					
5	16.4042					
6	19.6850					
7	22.9659					
8	26.2467					
9	29.5276					
10	32.8084					

To convert meters to feet multiply by 3.2808
 To convert feet to meters multiply by 0.3048

UTM grid convergence (GN) and 1975 magnetic declination (M) at center of map
 Diagram is approximate

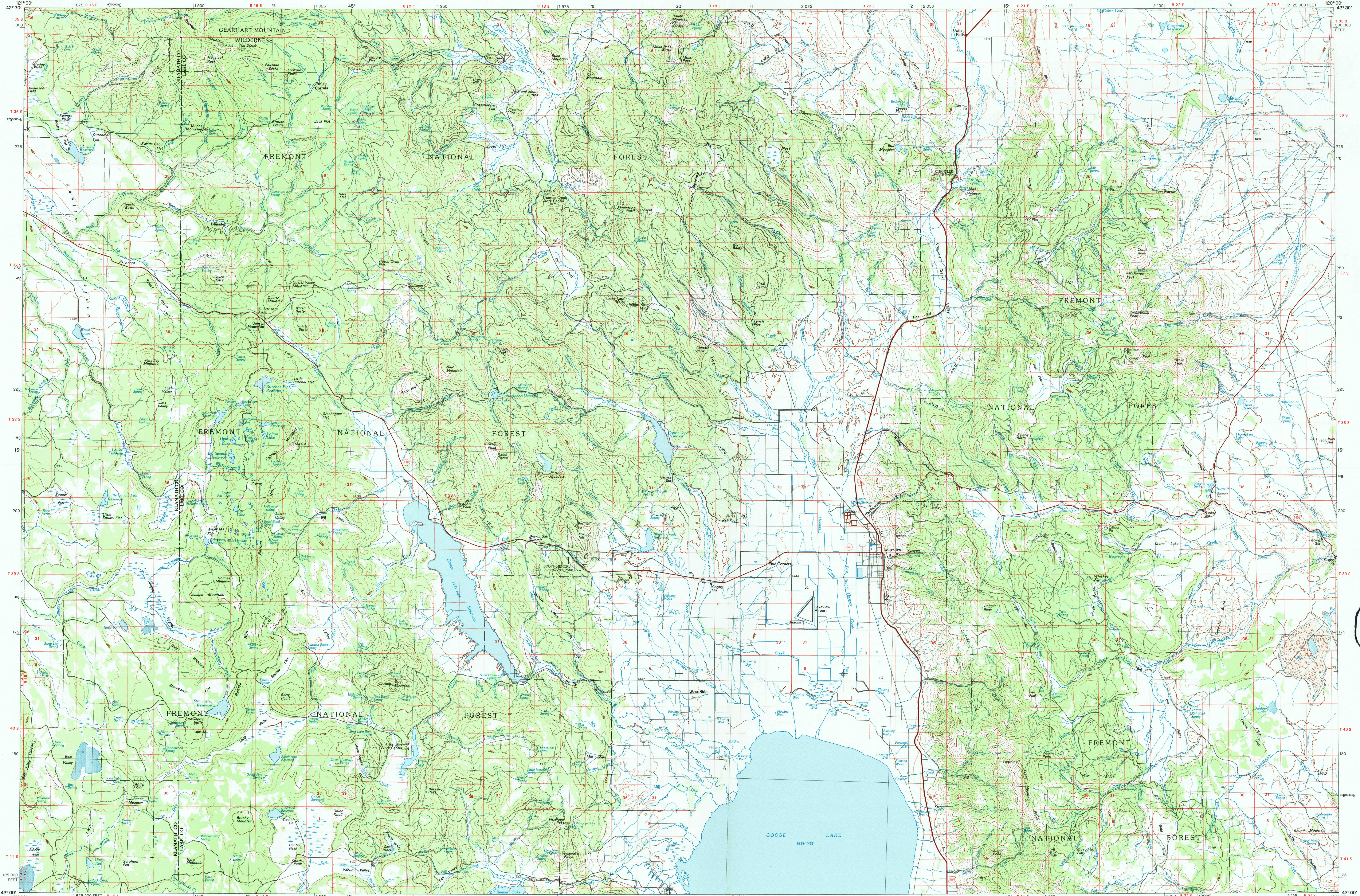
1 Williamson River
 2 Lake Abert
 3 Bluejacket Lake
 4 Klamath Falls
 5 Adet
 6 Tule Lake
 7 Colville
 8 Yva

FOR SALE BY U.S. GEOLOGICAL SURVEY
 DENVER, COLORADO 80225, OR RESTON, VIRGINIA 22092



Topographic Map Symbols

- Primary highway, hard surface
- Secondary highway, hard surface
- Light duty road, principal street, hard or improved surface
- Other road or street; trail
- Route marker: Interstate, U. S., State
- Railroad: standard gage; narrow gage
- Bridge; overpass; underpass
- Tunnel: road; railroad
- Both up area, locality, elevation
- Alps; landing field; landing strip
- National boundary
- State boundary
- County boundary
- National or State reservation boundary
- Land grant boundary
- U. S. public lands survey: range, township; section
- Range, township; section line, projected
- Power transmission line; pipeline
- Dam; dam with lock
- Cemetery; building
- Windmill; water well; spring
- Mine shaft; adit or cave; mine; quarry; gravel pit
- Commemorative stone area; U. S. location monument
- Ruins; cliff dwelling
- Distorted surface: strip mine; levee; sand
- Contours: index; intermediate; supplementary
- Bathymetric contours: index; intermediate
- Stream, lake; perennial; intermittent
- Rapids; large and small; falls, large and small
- Area to be submerged; marsh; swamp
- Land subject to controlled inundation; woodland
- Scrub; mangrove
- Orchard; vineyard



A publisher describing topographic maps is available on request