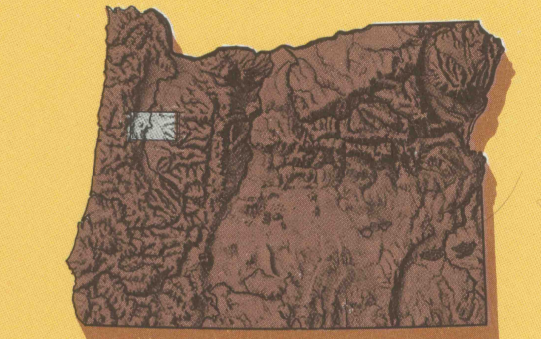


1:100 000-scale metric
topographic map of
North Santiam River
OREGON



- 30 X 60 MINUTE QUADRANGLE
SHOWING
- Contours and elevations in meters
 - Highways, roads and other manmade structures
 - Water features
 - Geographic names



Edited and published by the Bureau of Land Management
Base map prepared by the U.S. Geological Survey
Compiled from USGS 1:24 000 and 1:62 500-scale topographic maps dated 1951-1970. Planimetry revised from aerial photographs taken 1975 and other source data. Revised information not field checked. Map edited 1983.

Projection and 10 000-meter grid, zone 10,
Universal Transverse Mercator
25 000-foot grid ticks based on Oregon coordinate system,
north zone, 1927 North American Datum
To place on the predicted North American Datum 1983
move the projection lines 19 meters north and 88 meters east

NATIONAL GEODETIC VERTICAL DATUM OF 1929
THIS MAP COMPLIES WITH NATIONAL MAP ACCURACY STANDARDS

CONVERSION TABLE	DECLINATION DIAGRAM	ADJOINING MAPS	
Meters			
1			1
2			2
3			3
4			4
5			5
6			6
7			7
8			8
9			9
10	10		

To convert meters to feet multiply by 3.2808
To convert feet to meters multiply by 0.3048

UTM grid convergence (GN) and 1983 magnetic declination (MD) Diagram is approximate

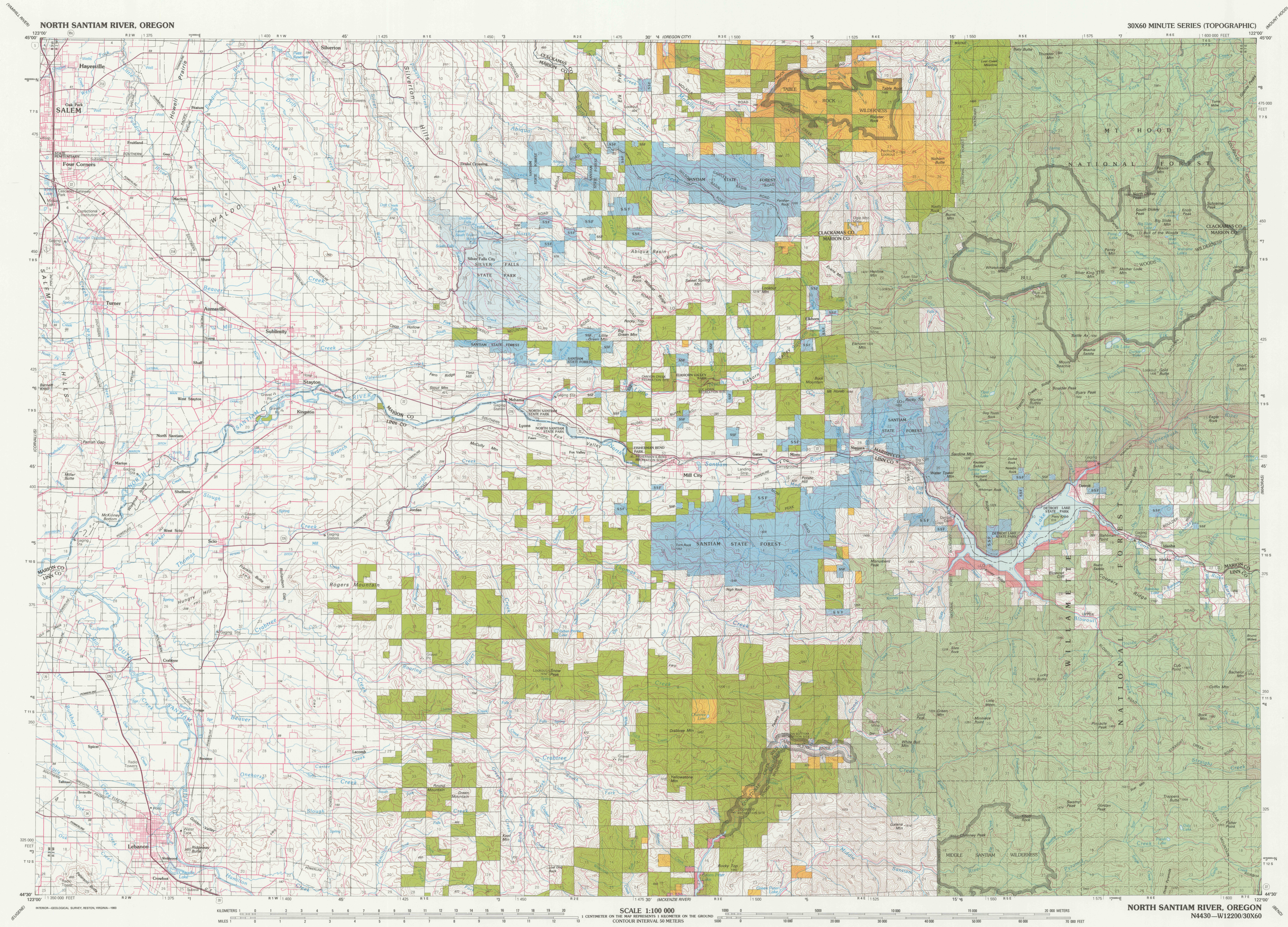
1 Yrebbill River
2 Oregon City
3 Mount Hood
4 Corvallis
5 Eugene
6 McKenzie River
7 Bend

FOR SALE BY U.S. GEOLOGICAL SURVEY, DENVER, COLORADO 80225
and
BLM STATE OFFICE
PORTLAND, OR 97208

Topographic Map Symbols

- Primary highway, hard surface
- Secondary highway, hard surface
- Light duty road, principal street, hard or improved surface
- Other road or street, trail
- Road marker, intersection, U. S. State
- Railroad, standard gage, narrow gage
- Bridge, overpass, underpass
- Tunnel, road, railroad
- Built up area, quarry, elevation
- Airport, landing field, landing strip
- National boundary
- State boundary
- County boundary
- National or State reservation boundary
- Land grant boundary
- U. S. public lands survey, range, township, section
- Range, township, section line, protracted
- Power transmission line, pipeline
- Dam, dam with lock
- Cemetery, building
- Windmill, water well, spring
- Mine shaft, adit or cave, mine, quarry, gravel pit
- Compass rose, point area, U. S. location monument
- Ruin, cliff dwelling
- Distorted surface: strip mine, lava, sand
- Contours: index, intermediate, supplementary
- Bathymetric contours: index, intermediate
- Stream, lake, reservoir, intermittent
- Rapids, large and small, falls, large and small
- Area to be submerged; marsh, swamp
- Land subject to controlled inundation

NOTE TO MAP USERS
The surface and minerals management status overlays are published as general planning and management tools. Some of the lands, surface and mineral rights, may have been shown as planned lands for the lack of information available to BLM with respect to the status of acquisition. Tracts less than 40 acres are usually omitted because of the map scale. Access through private lands may be restricted. The official land records in the respective offices of the Bureau of Land Management or other responsible Federal agencies should be checked for up-to-date status on any specific tract of land. Inquiries on BLM maps should be referred to the respective Bureau of Land Management office from which the maps were obtained.



BUREAU OF LAND MANAGEMENT
LAND STATUS LEGEND

Public Lands (Administered By Bureau of Land Management)	National Parks and Monuments	Bureau of Reclamation	Department of Energy (DOE)	State, County, City, Wildlife, Park and Outdoor Recreation Areas
Oregon & California Lands (O&C Lands)	Indian Lands or Reservations	Power Withdrawals and Classifications	Oregon & California Lands (O&C Lands) Administered By US Forest Service	Acquired Lands (By Administering Agency)
Cool Bay Wagon Road (CBWR)	Military Reservations and Withdrawals	Federal Agency Protective Withdrawals	Radio & Air Facilities	
National Forest	Corps of Engineers	Patented Lands	Miscellaneous	
National Grasslands	Wildlife Refuges	State Lands		
		Public Water Reserves		

17 AUG 1993