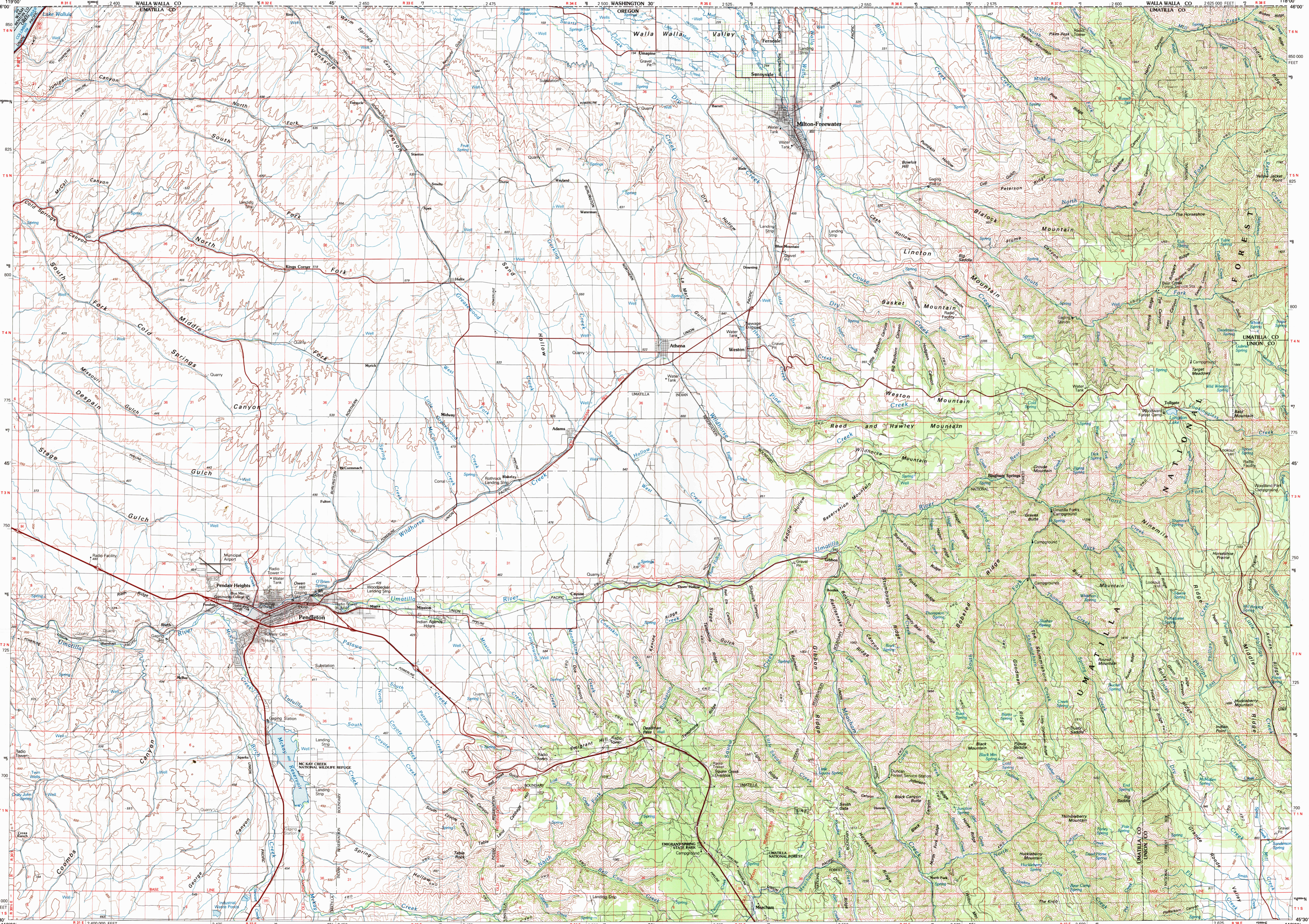


PENDLETON, OREGON-WASHINGTON

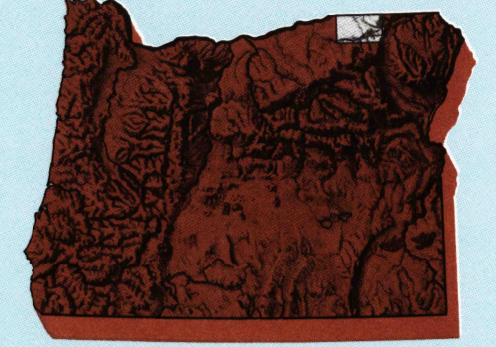
30X60 MINUTE SERIES (TOPOGRAPHIC)
WALLA WALLA CO UMATILLA CO



Pendleton

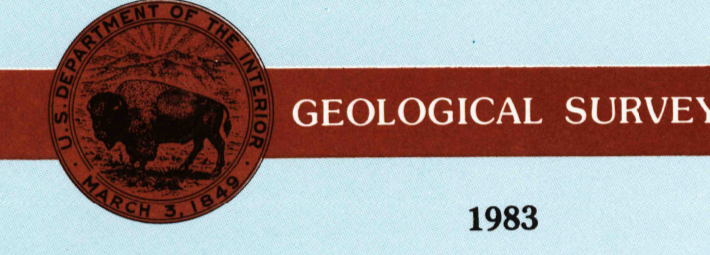
OREGON-WASHINGTON

1:100 000-scale metric topographic map



30 X 60 MINUTE QUADRANGLE SHOWING

- Contours and elevations in meters
- Highways, roads and other manmade structures
- Water features
- Woodland areas
- Geographic names



Produced by the United States Geological Survey
 Compiled from USGS 1:24 000-scale topographic maps dated 1963-1978. Planimetry revised from aerial photographs taken 1981 and other source data. Revised information not field checked. Map edited 1983.
 Projection and 10 000-meter grid, zone 11, Universal Transverse Mercator
 25 000-foot grid ticks based on Oregon coordinate system, north zone, 1927 North American Datum
 To place on the predicted North American Datum 1983 move the projection lines 18 meters north and 83 meters east. There may be private inholdings within the boundaries of the National or State reservations shown on this map.

CONTOUR INTERVAL 50 METERS

THIS MAP COMPLIES WITH NATIONAL MAP ACCURACY STANDARDS

CONVERSION TABLE		DECLINATION DIAGRAM		ADJOINING MAPS		
Meters	Feet	1°	19°	1	2	3
1	3.2808			1	2	3
2	6.5617					
3	9.8425					
4	13.1234					
5	16.4042					
6	19.6850					
7	22.9659					
8	26.2467					
9	29.5275					
10	32.8084					

To convert meters to feet multiply by 3.2808
 To convert feet to meters multiply by 0.3048

UTM grid convergence (GM) and 1983 magnetic declination (M) at center of map Diagram is approximate

1	2	3
1	4	5
2	7	8

1 Richland
 2 Walla Walla
 3 Clarkston
 4 Wenatchee
 5 Wallawa
 6 Hesperian
 7 La Grande
 8 Enterprise

FOR SALE BY U.S. GEOLOGICAL SURVEY, DENVER, COLORADO 80225 OR RESTON, VIRGINIA 22092

Topographic Map Symbols

Primary highway, hard surface	
Secondary highway, hard surface	
Light duty road, principal street, hard or improved surface	
Other road or street, trail	
Route marker: Interstate; U. S.; State	
Railroad: standard gage; narrow gage	
Bridge, overpass, underpass	
Tunnel; road, railroad	
Built up area, locality, elevation	
Airport: landing field; landing strip	
National boundary	
State boundary	
County boundary	
National or State reservation boundary	
Land	
U. S. public lands survey: range, township, section	
Range, township; section line; protected	
Power transmission line; pipeline	
Dam; dam with lock	
Cemetery; building	
Windmill; water well; spring	
Mine shaft; salt or cave; mine, quarry, gravel pit	
Campground; picnic area; U. S. location monument	
Ruins; cliff dwelling	
Distorted surface: strip mine, lava, sand	
Contours: index; intermediate; supplementary	
Bathymetric contours: index; intermediate	
Stream, lake: perennial; intermittent	
Rapids, large and small; falls, large and small	
Area to be submerged; marsh, swamp	
Land subject to controlled inundation; woodland	
Scrub; mangrove	
Orchard; vineyard	

RETURN TO: USGS AND HISTORICAL MAP ARCHIVES