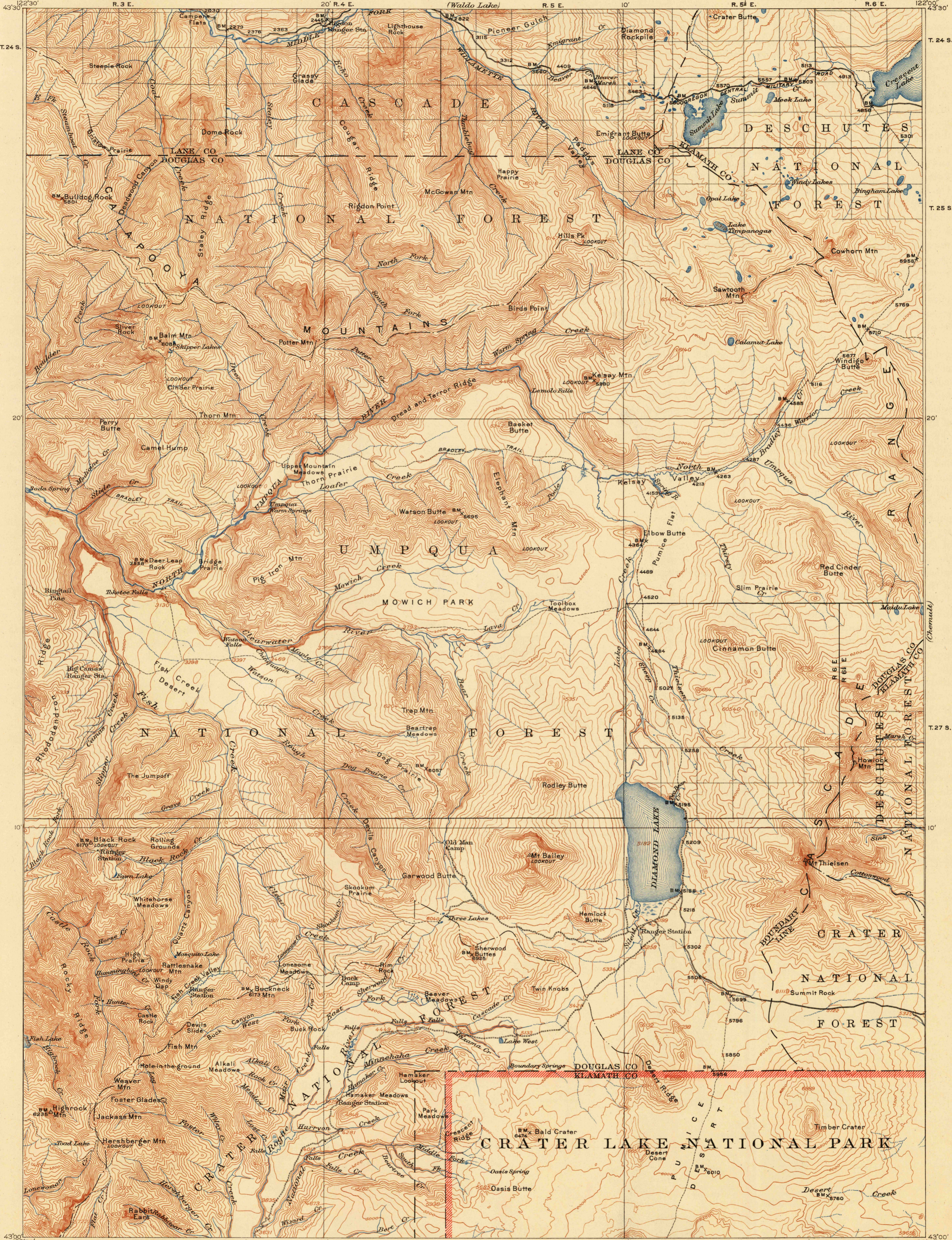


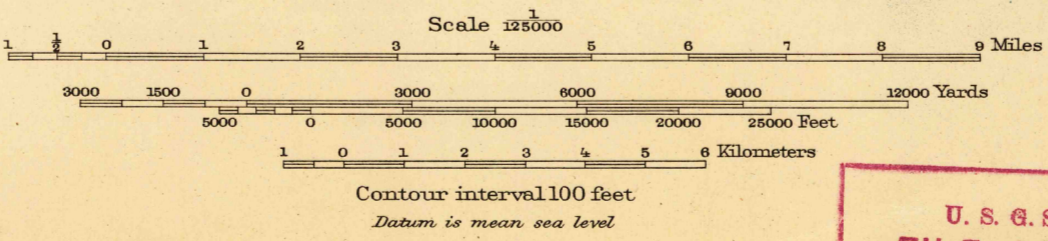
U. S. G. S.  
FILE COPY  
Inspection and Editing.

UNITED STATES  
DEPARTMENT OF THE INTERIOR  
GEOLOGICAL SURVEY

OREGON  
DIAMOND LAKE QUADRANGLE



R.B. Marshall, Chief Geographer.  
T.G. Gardine, Geographer in charge.  
Topography by J.G. Staack, O.H. Nelson, and R.M. Wilson.  
Control by U.S. Coast and Geodetic Survey, O.H. Nelson, and R.M. Wilson.  
Surveyed in 1913-1914.



Map of the Crater Lake National Park and vic., scale 1:62,500, from later and more detailed surveys, covering the part of this area south of Lat. 43°10' and east of Long. 122°20', is available.  
USGS  
Historical File  
Topographic Division

DIAMOND LAKE, OREG.  
Edition of 1917  
reprinted 1948  
with corrections  
N4300-W12200/30

U. S. G. S.  
FILE COPY  
Inspection and Editing.

HISTORICAL

FEB 19 1948

3195