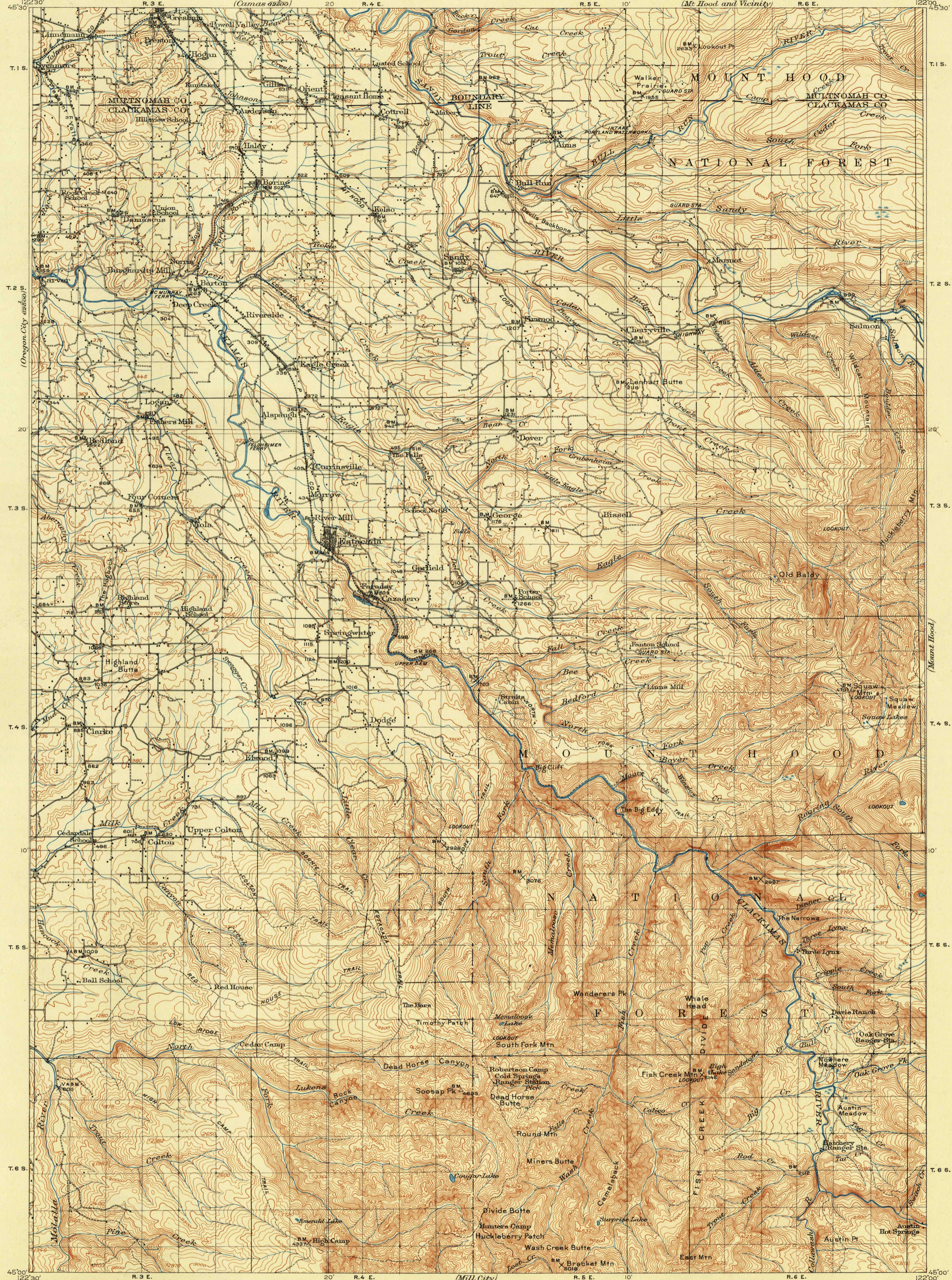
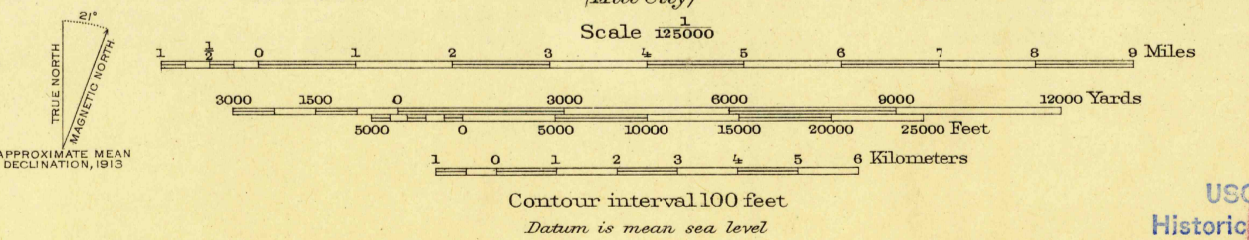


U. S. G. S.  
FILE COPY  
Inspection and Editing.



R. B. Marshall, Chief Geographer.  
T. G. Gerding, Geographer in charge.  
Topography by A. E. Murlin, S. G. Lunde, Cornelius Schnurr,  
F. W. Crisp, and W. G. Carson, and from Boring  
and Mt. Hood and vicinity maps  
Control by C. F. Urquhart, O. C. Kintner, and E. M. Bandli.  
Surveyed in 1907 and 1909-1913.



Edition of 1916, reprinted 1948  
Polyconic projection, North American datum

Map of the Boring quadrangle,  
scale 1:62 500, from a more  
detailed survey, covering the  
northwest quarter of this area,  
is available.

OREG.  
ESTACADA  
N 4500 - W 12200/30

U.S.G.S.  
Historical File  
Topographic Division  
U. S. G. S.  
FILE COPY  
Inspection and Editing.

HISTORICAL  
JAN 23 1948 3225