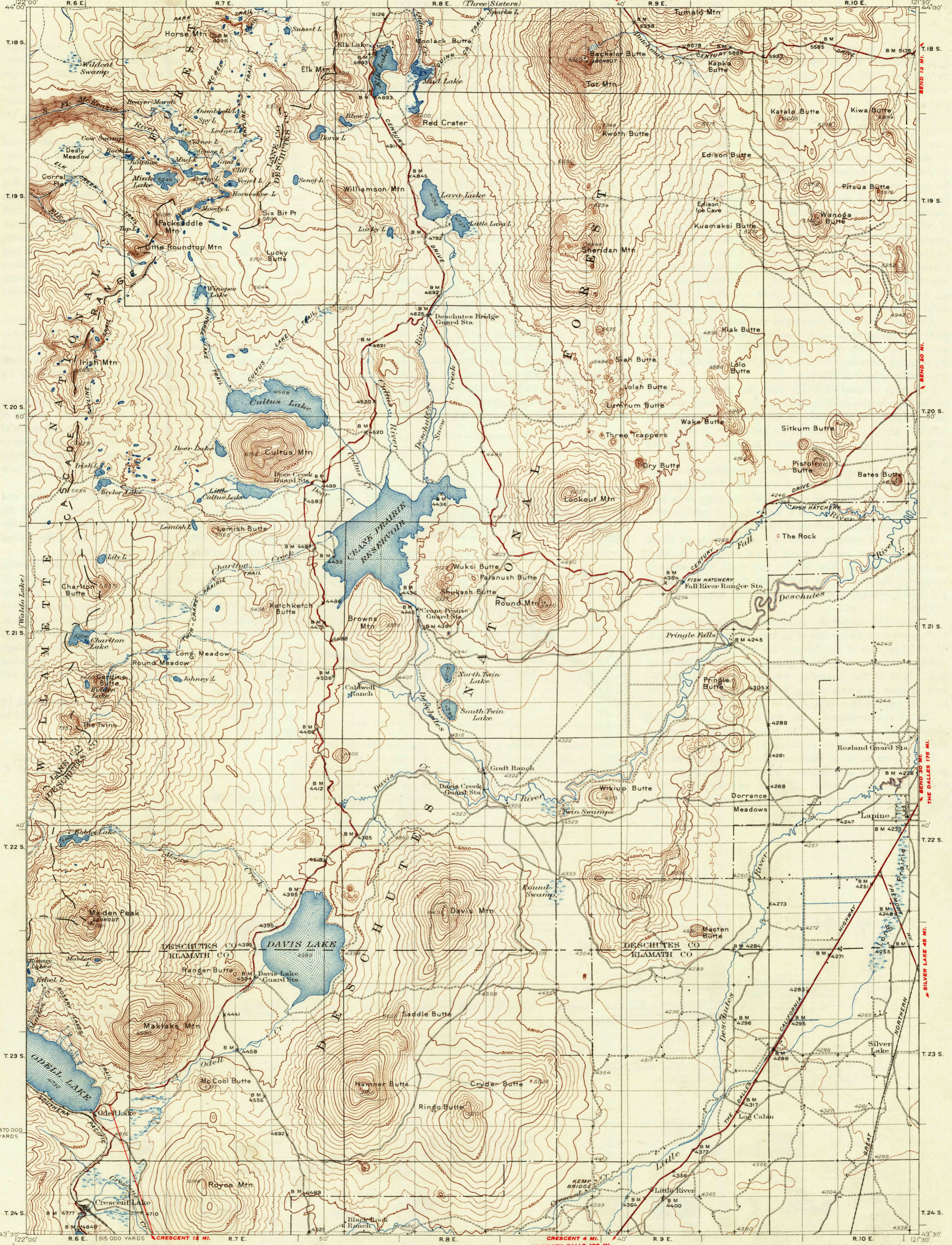
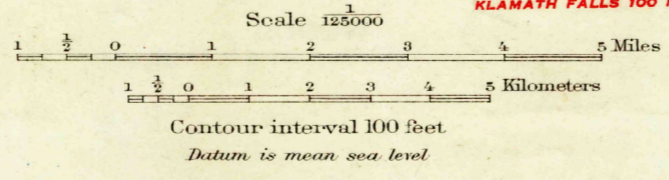


DEPARTMENT OF THE INTERIOR
U. S. GEOLOGICAL SURVEY

OREGON
MAIDEN PEAK QUADRANGLE



Topography by C.A. Stonesifer, Geo. A. Fischer, J.J. Hayes, and U.S. Forest Service
Control by U.S. Geological Survey, U.S. Coast and Geodetic Survey, U.S. Bureau of Reclamation, U.S. Forest Service, Oregon State Highway Department, and Oregon Geographic Board
Surveyed in 1930



Polyconic projection, North American datum
5000 yard grid based upon U.S. zone system, G
Land lines pertaining to T. 18, 19, and 20 S., R. 5 and 7 E., are omitted because land plats and topography cannot be reconciled
MAIDEN PEAK, OREG.
Edition of 1934

APPROXIMATE MEAN DECLINATION, 1930
HARD IMPERVIOUSLY SURFACED ROADS
OTHER MAIN TRAVELED ROADS

BELOIT COLLEGE LIBRARY
BELOIT, WISCONSIN