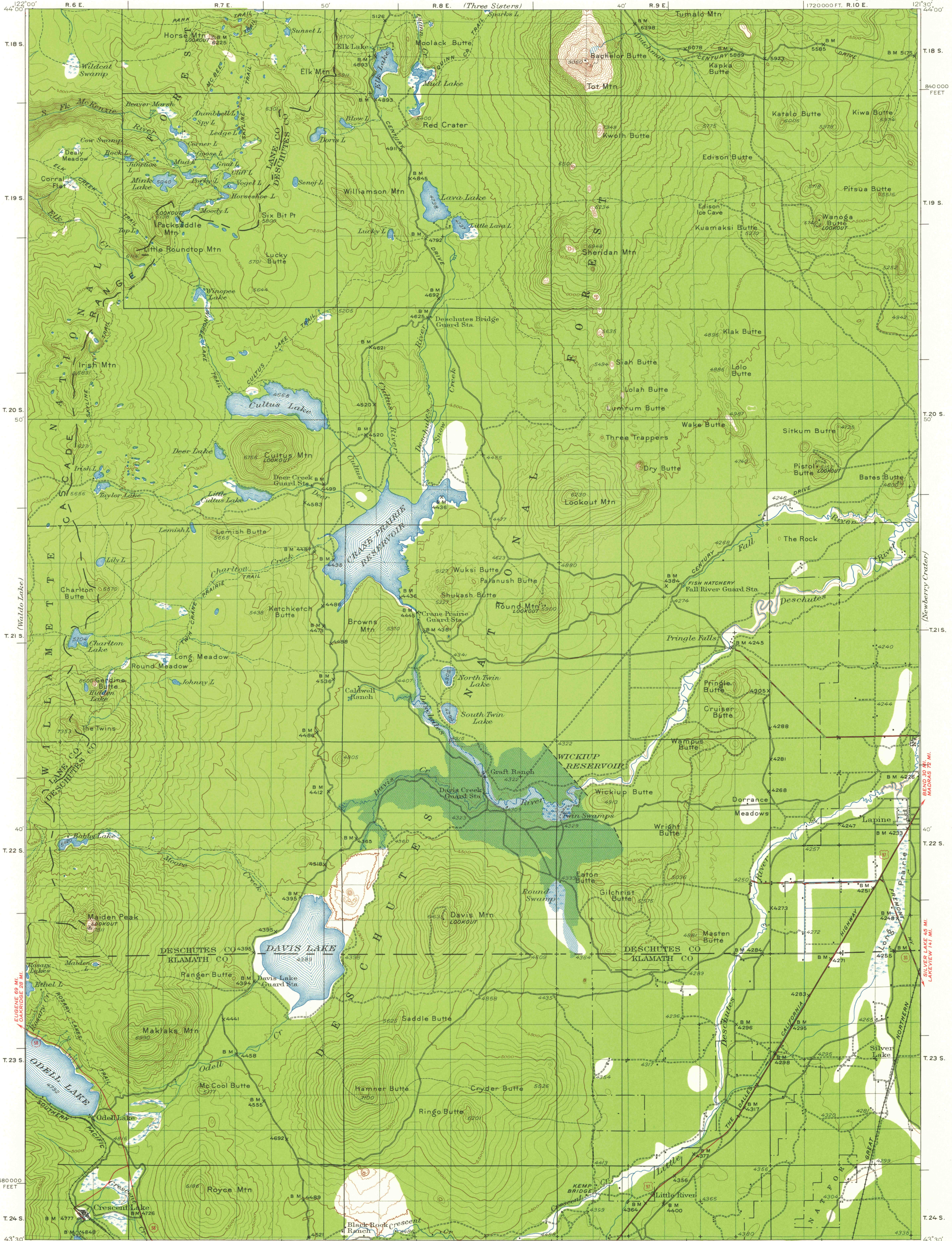


UNITED STATES  
DEPARTMENT OF THE INTERIOR  
GEOLOGICAL SURVEY

OREGON  
MAIDEN PEAK QUADRANGLE



Topography by C.A. Stonesifer, Geo. A. Fischer, J.J. Hayes, and U.S. Forest Service  
Surveyed in 1930

**ROAD CLASSIFICATION**  
 Heavy-duty ——— Light-duty ———  
 Medium-duty ——— Unimproved dirt ———  
 U.S. Route State Route

TRUE NORTH  
MAGNETIC NORTH  
APPROXIMATE MEAN DECLINATION, 1930

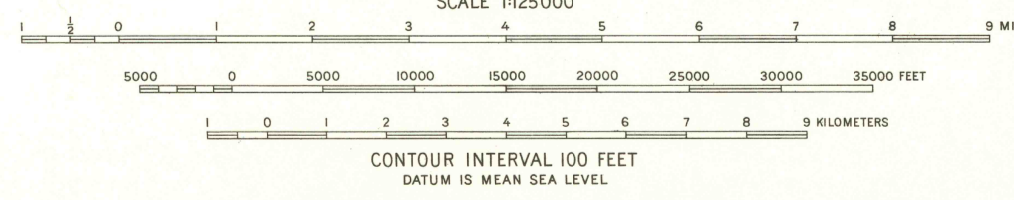


DIAGRAM OF TOWNSHIP

6	5	4	3	2	1
7	8	9	10	11	12
18	17	16	15	14	13
19	20	21	22	23	24
30	29	28	27	26	25
31	32	33	34	35	36

Polyconic projection. To place on 1927 North American datum move projection lines 105 feet north and 85 feet west  
 20,000-foot grid based on Oregon (South) rectangular coordinate system

Land lines pertaining to Ts. 18, 19, and 20 S., Rs. 6 and 7 E., are omitted because land plats and topography cannot be reconciled

MAIDEN PEAK, OREG.  
M 4330-W 12130/30

1930

FOR SALE BY U.S. GEOLOGICAL SURVEY, DENVER 25, COLORADO OR WASHINGTON 25, D.C.  
 A FOLDER DESCRIBING TOPOGRAPHIC MAPS AND SYMBOLS IS AVAILABLE ON REQUEST

RT-F FILE COPY