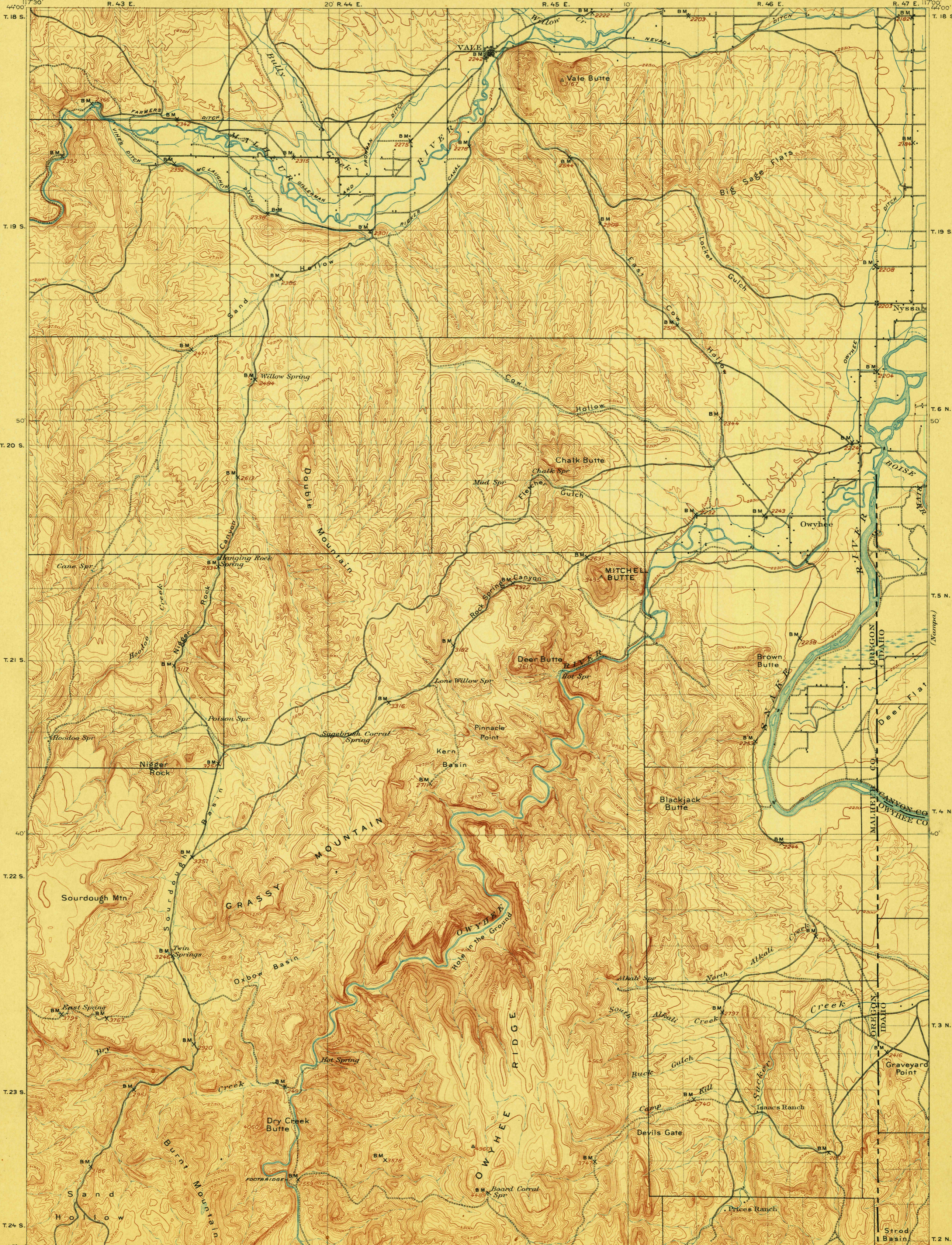


TOPOGRAPHY

U.S. GEOLOGICAL SURVEY
CHARLES D. WALCOTT, DIRECTOR

STATE OF OREGON
JOHN H. LEWIS, STATE ENGINEER

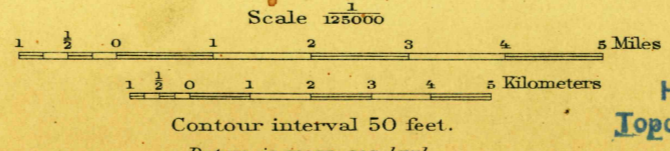
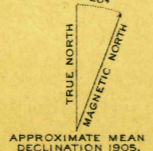
OREGON - IDAHO
MITCHELL BUTTE QUADRANGLE



ENGRAVED JUNE 1906 BY U.S.G.S.

E. M. Douglas, Geographer.
W. H. Herron, in charge of section.
Topography by Gilbert Young, S. T. Penick,
E. R. Bartlett, and Reclamation Service.
Triangulation by C. F. Urquhart.
Surveyed in 1905.

SURVEYED IN COOPERATION WITH THE STATE OF OREGON.



USGS Historical File Topographic Division

6	5	4	3	2	1
7	8	9	10	11	12
13	14	15	16	17	18
19	20	21	22	23	24
25	26	27	28	29	30
31	32	33	34	35	36

Mitchell Butte, Oreg. Ida.
AUG 31 1906
Div. Topographic Maps

U.S.G.S.
FILE COPY