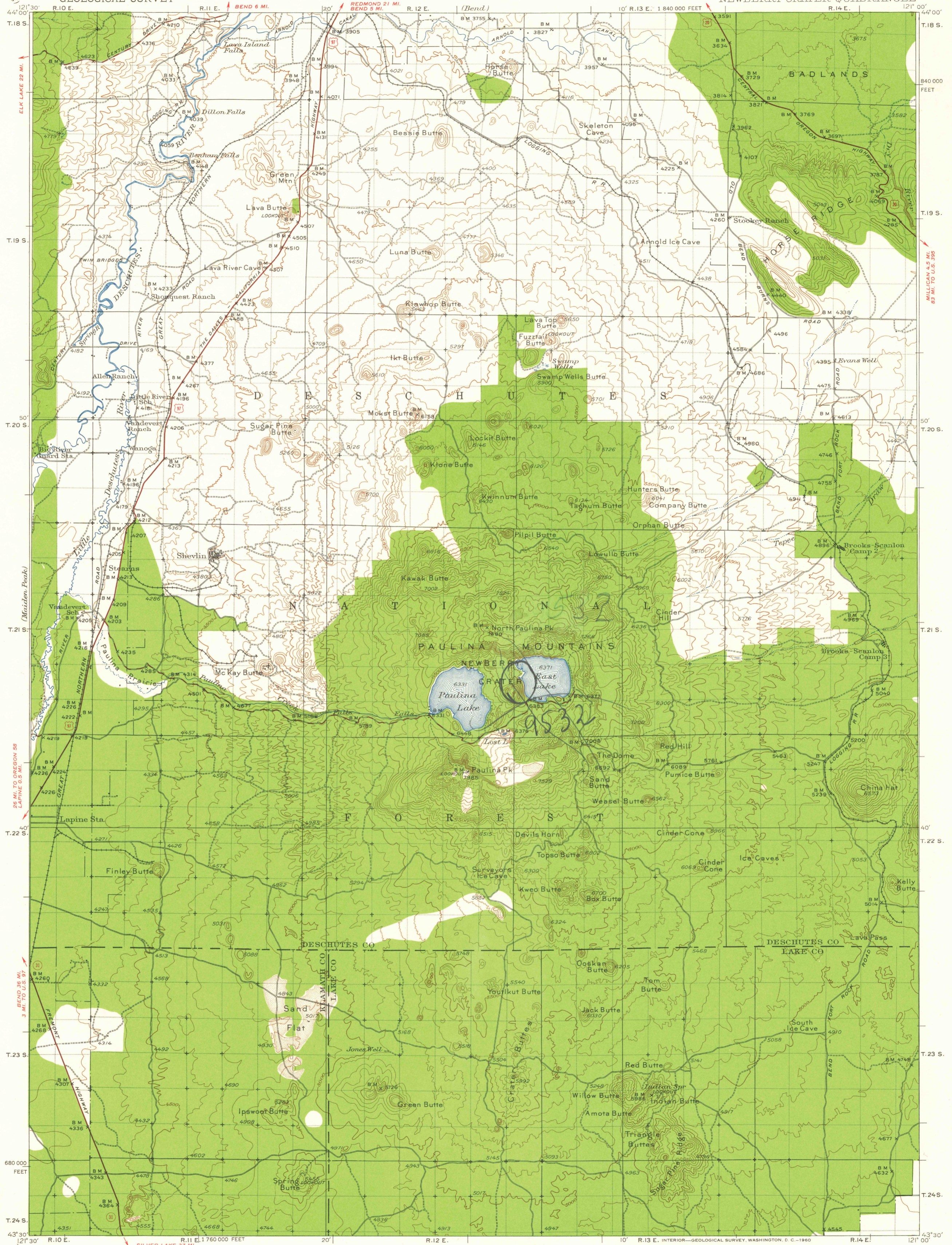


UNITED STATES
DEPARTMENT OF THE INTERIOR
GEOLOGICAL SURVEY

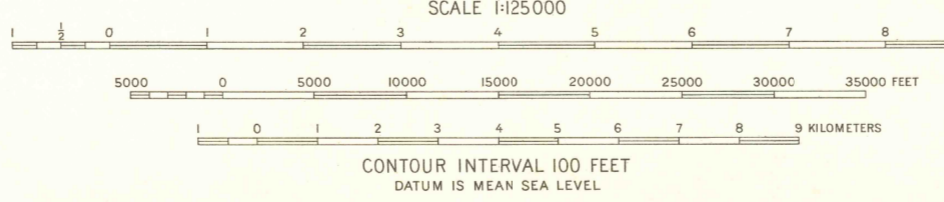
OREGON
NEWBERRY CRATER QUADRANGLE



Topography by C.A. Stonesifer, R.D. Courtney, G.A. Fischer and U.S. Forest Service. Surveyed in 1931.

ROAD CLASSIFICATION
 Heavy-duty ——— Light-duty ———
 Medium-duty ——— Unimproved dirt ———
 U.S. Route State Route

APPROXIMATE MEAN DECLINATION, 1931



Polyconic projection. To place on 1927 North American datum move projection lines 110 feet north and 85 feet west 20,000-foot grid based on Oregon (South) rectangular coordinate system.

NEWBERRY CRATER, OREG.
 N 4330—W 12100/30
 1931

FOR SALE BY U.S. GEOLOGICAL SURVEY, DENVER 25, COLORADO OR WASHINGTON 25, D.C.
 A FOLDER DESCRIBING TOPOGRAPHIC MAPS AND SYMBOLS IS AVAILABLE ON REQUEST

RT-F FILE COPY