

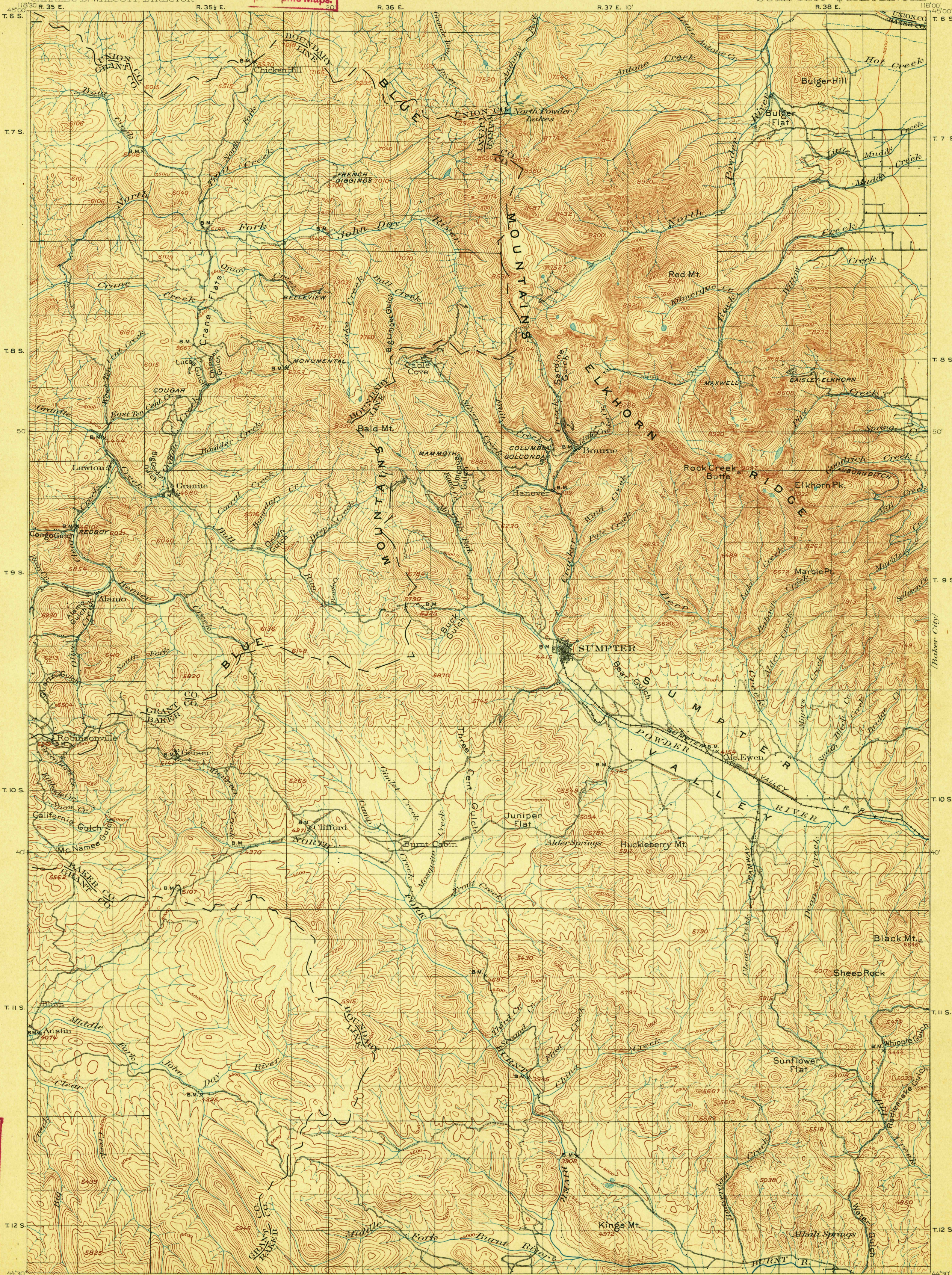
U. S. G. S.  
**FILE COPY**

U. S. GEOLOGICAL SURVEY  
CHARLES D. WALCOTT, DIRECTOR

# TOPOGRAPHIC SHEET

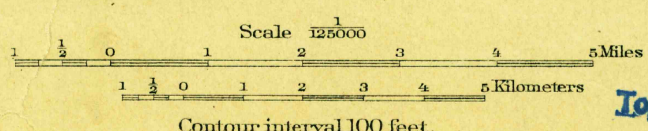
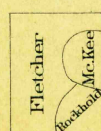
OREGON  
SUMPTER QUADRANGLE

pc phic Maps.



**FILE COPY**  
pc phic Maps.

ENGRAVED JUNE 1901 BY U. S. G. S.  
R. U. Goode, Geographer in charge.  
Triangulation by S. S. Gannett.  
Topography by L. C. Fletcher, R. H. McKee and J. E. Rockhold.  
Surveyed in 1899-1900.



USGS  
Historical File  
Topographic Division

**Sumpter, Oreg**

U.S. Geological Survey, I  
DEC 31 1901 (2610)

Edition of Nov. 1901.