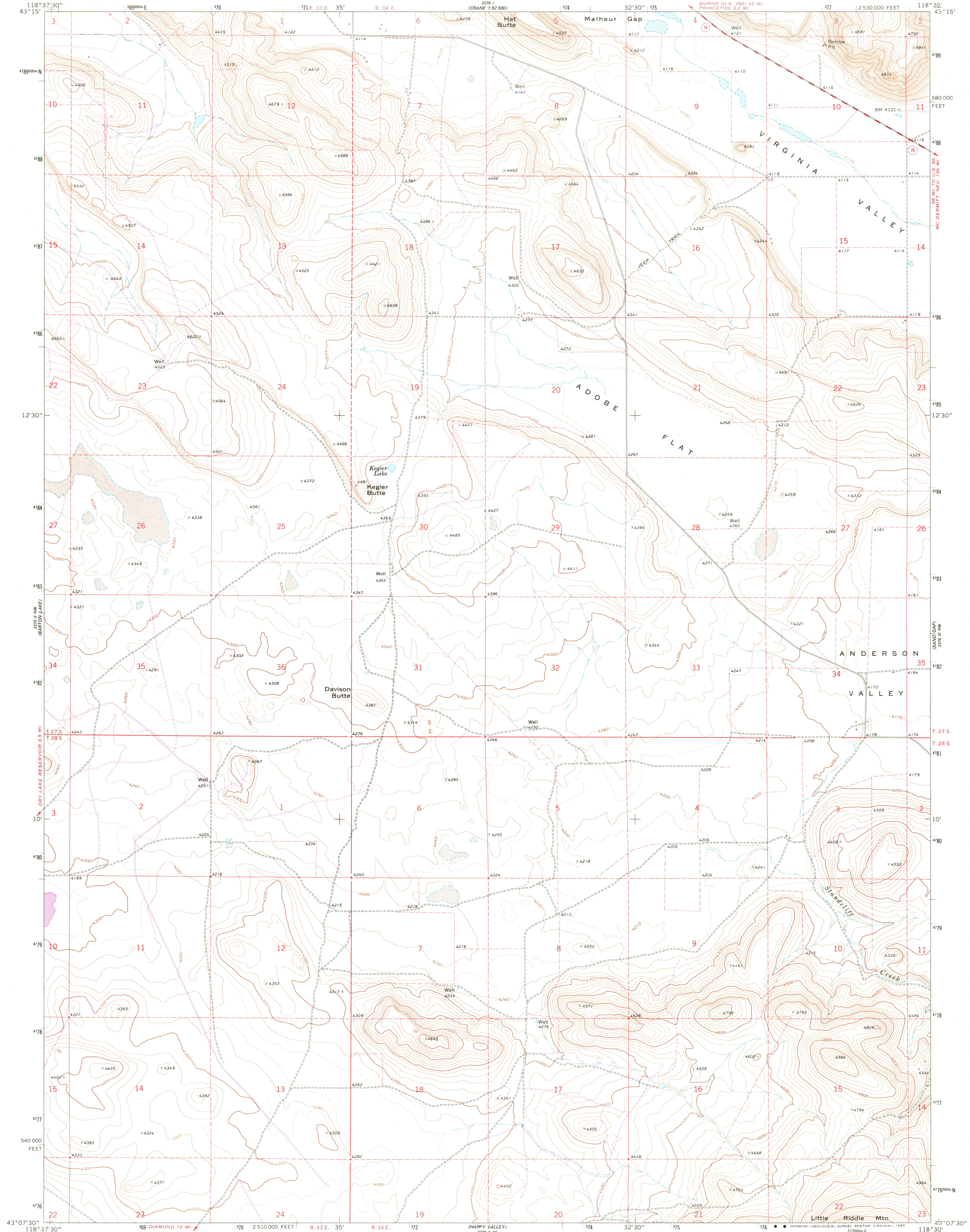
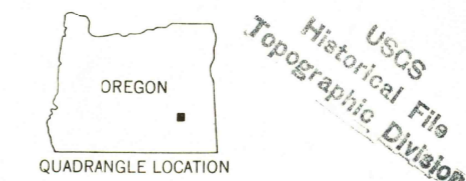
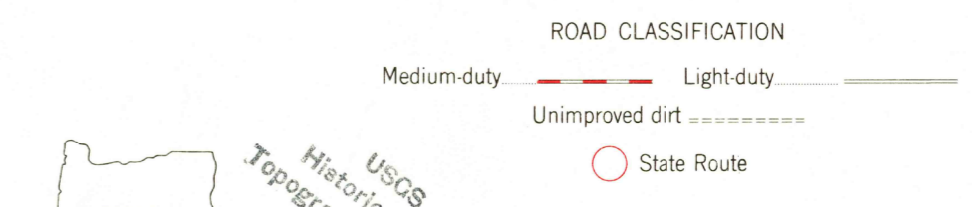
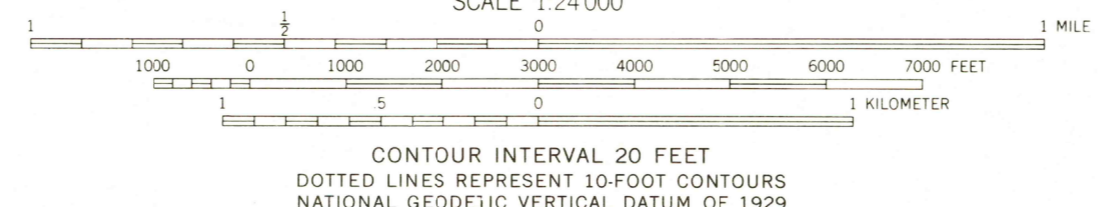
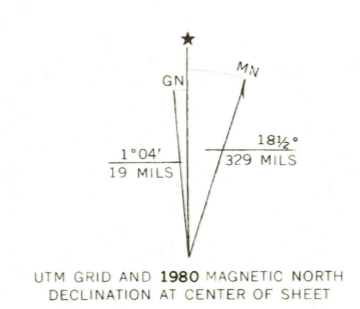


UNITED STATES
DEPARTMENT OF THE INTERIOR
GEOLOGICAL SURVEY

ADOBE FLAT QUADRANGLE
OREGON—HARNEY CO.
7.5 MINUTE SERIES (TOPOGRAPHIC)



Mapped, edited, and published by the Geological Survey
Control by USGS and NOS/NOAA
Topography by photogrammetric methods from aerial
photographs taken 1966. Field checked 1967
Polyconic projection. 1927 North American datum.
10,000-foot grid based on Oregon coordinate system, south zone
1000-meter Universal Transverse Mercator grid ticks,
zone 11, shown in blue.
To place on the predicted North American Datum 1983
move the projection lines 17 meters north and
83 meters east as shown by dashed corner ticks
Fine red dashed lines indicate selected fence lines



THIS MAP COMPLIES WITH NATIONAL MAP ACCURACY STANDARDS
FOR SALE BY U. S. GEOLOGICAL SURVEY, DENVER, COLORADO 80225, OR RESTON, VIRGINIA 22092
A FOLDER DESCRIBING TOPOGRAPHIC MAPS AND SYMBOLS IS AVAILABLE ON REQUEST

Revisions shown in purple compiled from aerial photographs
taken 1979 and other source data. This information not
field checked. Map edited 1980.

ADOBE FLAT, OREG.
N4307.5—W11830.7.5

1967
PHOTOREVISED 1980
DMA 2270 II NE—SERIES V892

JAN 27 1981
1900