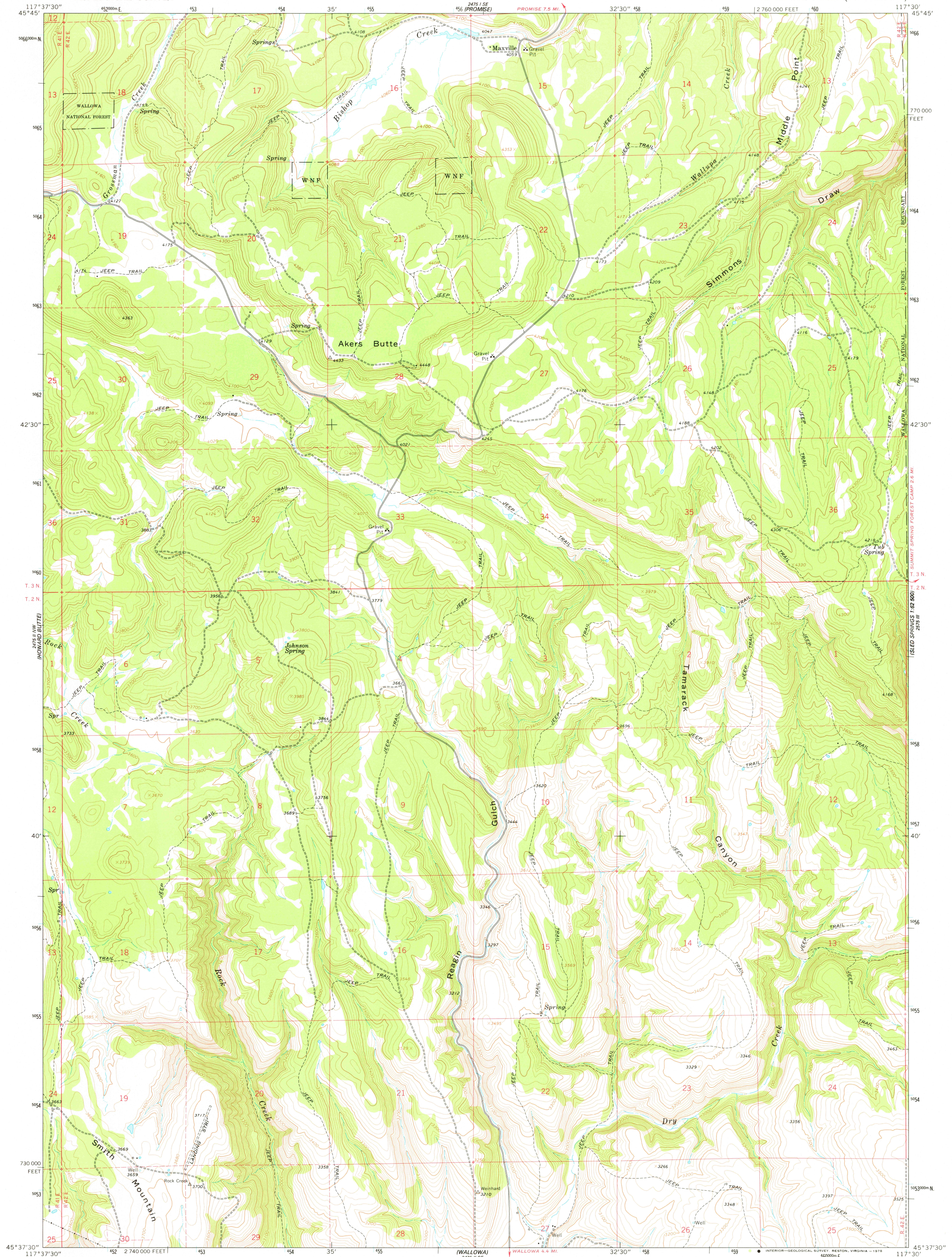


2475 13W
DEEP CREEK

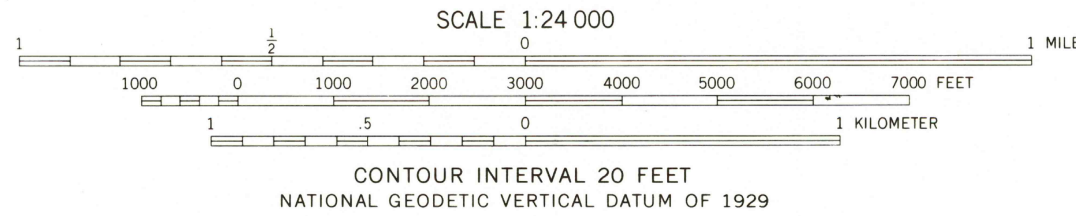
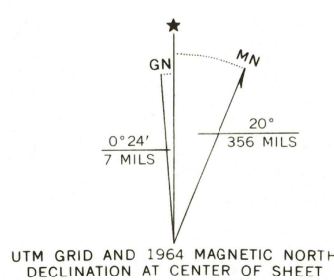
UNITED STATES
DEPARTMENT OF THE INTERIOR
GEOLOGICAL SURVEY

AKERS BUTTE QUADRANGLE
OREGON—WALLOWA CO.
7.5 MINUTE SERIES (TOPOGRAPHIC)

2475 14W
WOOD BUTTE



Mapped, edited, and published by the Geological Survey
Control by USGS and USC&GS
Topography by photogrammetric methods from aerial
photographs taken 1959. Field checked 1964
Polyconic projection. 1927 North American datum
10,000-foot grid based on Oregon coordinate system,
north zone.
1000-meter Universal Transverse Mercator grid ticks,
zone 11, shown in blue
Fine red dashed lines indicate selected fence lines



ROAD CLASSIFICATION
Light duty ——— Unimproved dirt - - - - -

AKERS BUTTE, OREG.
N4537.5—W11730/7.5

APR 17 1978

THIS MAP COMPLIES WITH NATIONAL MAP ACCURACY STANDARDS
FOR SALE BY U. S. GEOLOGICAL SURVEY, DENVER, COLORADO 80225, OR RESTON, VIRGINIA 22092
A FOLDER DESCRIBING TOPOGRAPHIC MAPS AND SYMBOLS IS AVAILABLE ON REQUEST

Historical File
Topographic Division

1964
AMS 2475 11 NE—SERIES V892