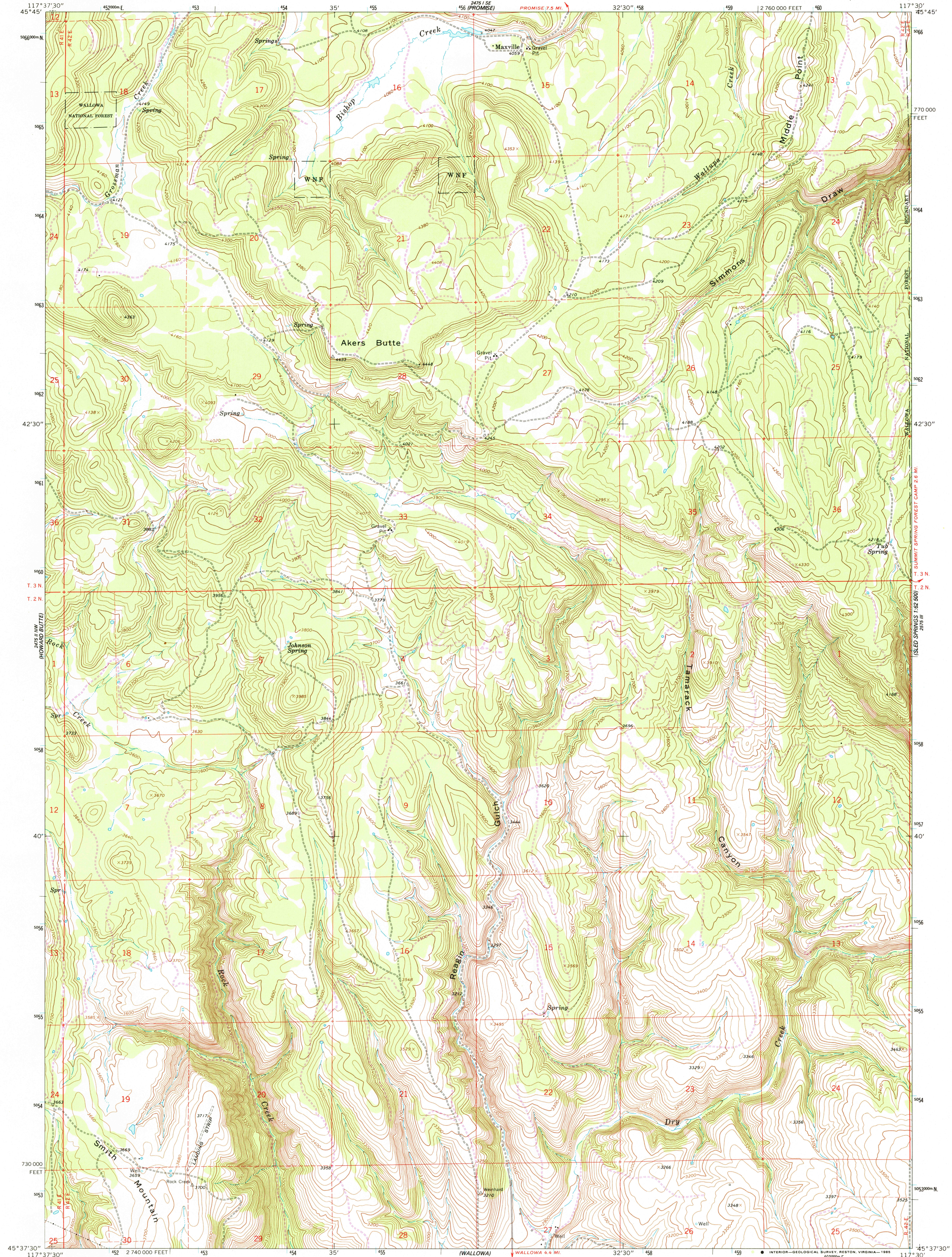


45° 37' 30" N
117° 37' 30" W
(DEER CREEK)

UNITED STATES
DEPARTMENT OF THE INTERIOR
GEOLOGICAL SURVEY

AKERS BUTTE QUADRANGLE
OREGON-WALLOWA CO.
7.5 MINUTE SERIES (TOPOGRAPHIC)

45° 37' 30" N
117° 37' 30" W
(WOOD BUTTE)



Mapped, edited, and published by the Geological Survey
Control by USGS and NOS/NOAA

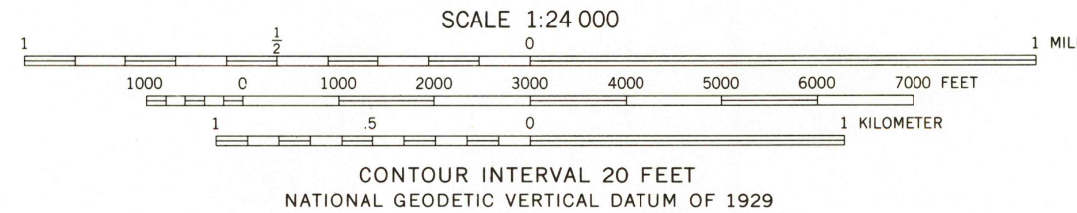
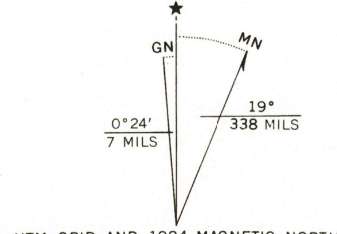
Topography by photogrammetric methods from aerial
photographs taken 1959. Field checked 1964

Polyconic projection. 1927 North American datum
10,000-foot grid based on Oregon coordinate system,
north zone

1000-meter Universal Transverse Mercator grid ticks,
zone 11, shown in blue

To place on the predicted North American Datum 1983
move the projection lines 17 meters north and
80 meters east as shown by dashed corner ticks

Fine red dashed lines indicate selected fence lines
There may be private inholdings within the boundaries of
the National or State reservations shown on this map



THIS MAP COMPLIES WITH NATIONAL MAP ACCURACY STANDARDS
FOR SALE BY U.S. GEOLOGICAL SURVEY, DENVER, COLORADO 80225, OR RESTON, VIRGINIA 22092
A FOLDER DESCRIBING TOPOGRAPHIC MAPS AND SYMBOLS IS AVAILABLE ON REQUEST



ROAD CLASSIFICATION
Light duty ————— Unimproved dirt - - - - -

AKERS BUTTE, OREG.
45117-F5-TF-024

1964
PHOTOREVISED 1984
DMA 2475 II NE-SERIES V892

Revision shown in purple and woodland compiled from
aerial photographs taken 1981 and other sources
Partial field check by U.S. Forest Service. Map edited 1984

RETURN TO:
USGS AND HISTORICAL MAP ARCHIVES