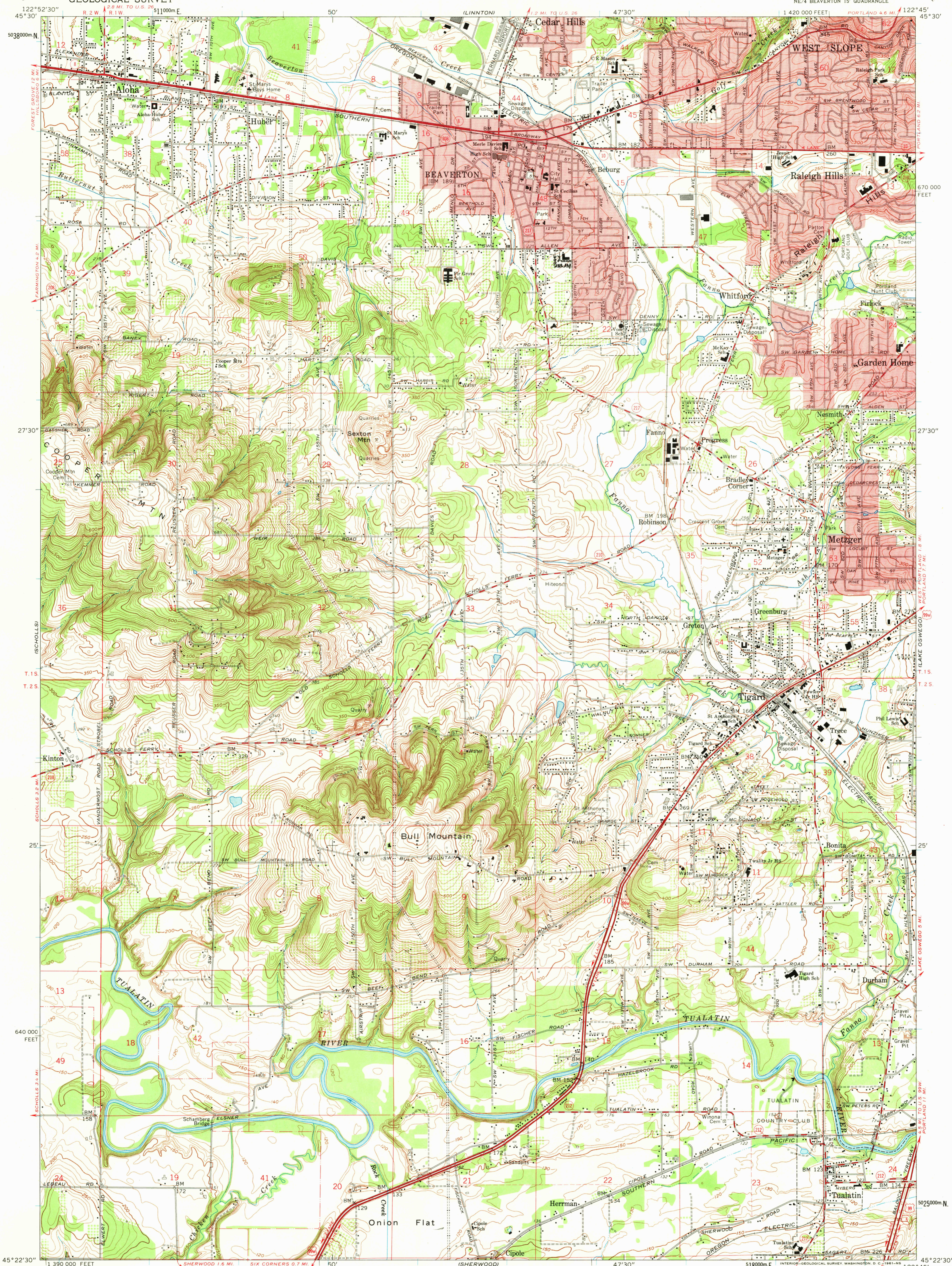


UNITED STATES  
DEPARTMENT OF THE INTERIOR  
GEOLOGICAL SURVEY

BEAVERTON QUADRANGLE  
OREGON—WASHINGTON CO.  
7.5 MINUTE SERIES (TOPOGRAPHIC)  
NE/4 BEAVERTON 15' QUADRANGLE



122°52'30" R. 2 W. R. 1 W. TO U.S. 26 511000m E. 50'

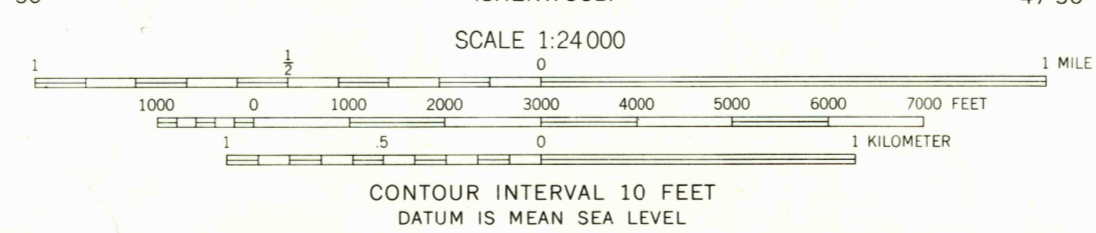
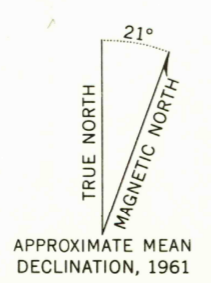
5038000m N. 45°30'

122°52'30" R. 2 W. R. 1 W. TO U.S. 26 511000m E. 50'

45°22'30" 122°52'30" R. 2 W. R. 1 W. TO U.S. 26 511000m E. 50'

5025000m N. 45°22'30" 122°52'30" R. 2 W. R. 1 W. TO U.S. 26 511000m E. 50'

Control by USGS, USC&GS, and State of Oregon  
Topography from aerial photographs by photogrammetric methods  
Aerial photographs taken 1952. Field check 1954  
Revised from aerial photographs taken 1960. Field check 1961  
Polyconic projection. 1927 North American datum  
10,000-foot grid based on Oregon coordinate system, north zone  
1000-meter Universal Transverse Mercator grid ticks,  
zone 10, shown in blue  
Red tint indicates areas in which only landmark buildings are shown  
Fine red dashed lines indicate selected fence lines



USGS  
Historical File  
Topographic Division

ROAD CLASSIFICATION

Heavy-duty	Light-duty
Medium-duty	Unimproved dirt
Interstate Route	U.S. Route
	State Route



U.S.G.S.  
BEAVERTON, OREG.  
NE/4 BEAVERTON 15' QUADRANGLE  
N4522.5 - W12245.7.5

FILE COPY  
TOPOGRAPHIC DIVISION

1961

THIS MAP COMPLIES WITH NATIONAL MAP ACCURACY STANDARDS  
FOR SALE BY U.S. GEOLOGICAL SURVEY, DENVER 25, COLORADO OR WASHINGTON 25, D.C.  
A FOLDER DESCRIBING TOPOGRAPHIC MAPS AND SYMBOLS IS AVAILABLE ON REQUEST

MAR 4 1969  
1180