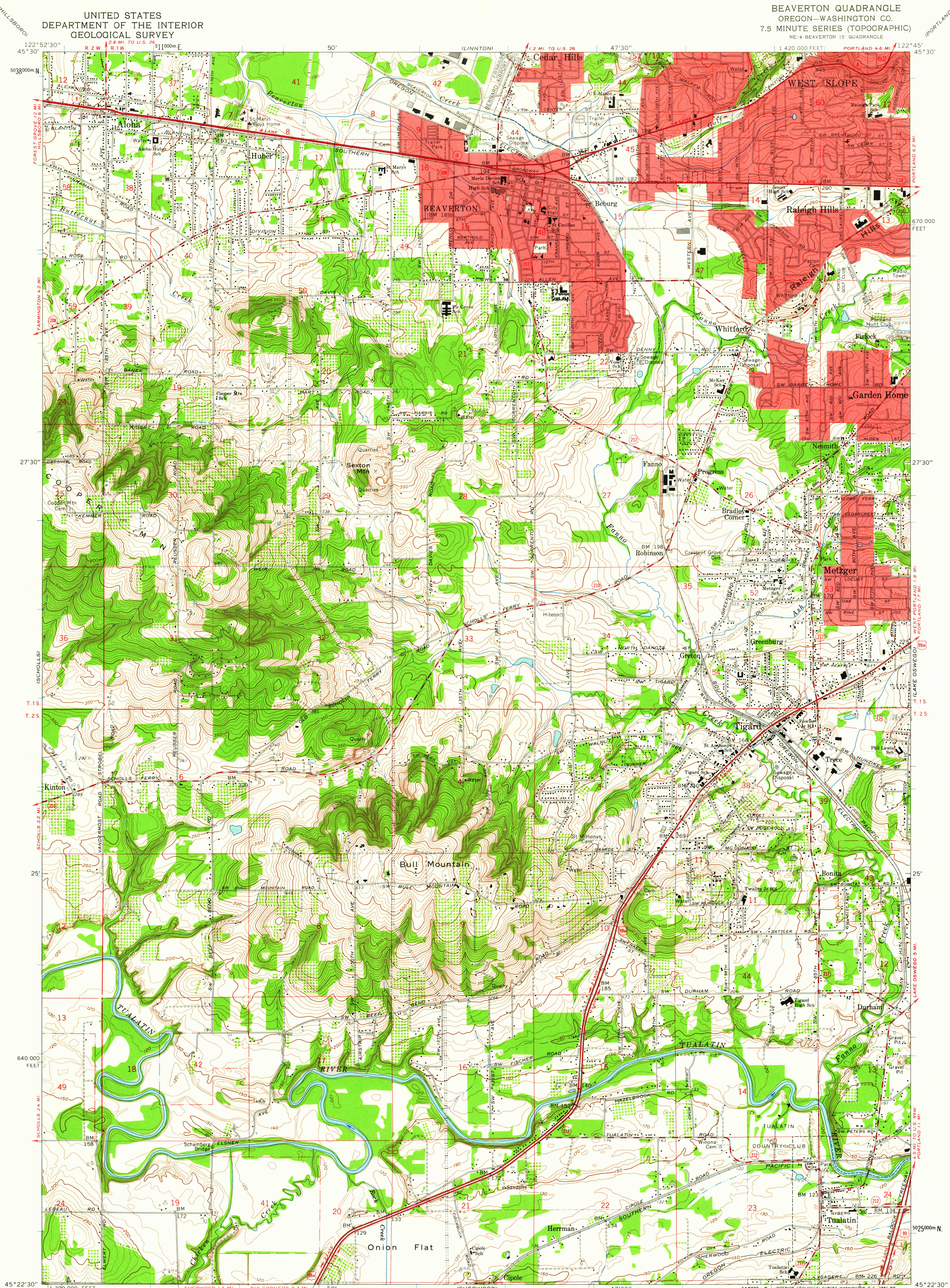
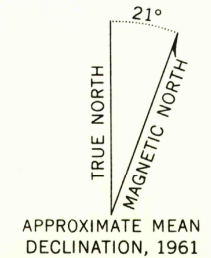


UNITED STATES
DEPARTMENT OF THE INTERIOR
GEOLOGICAL SURVEY

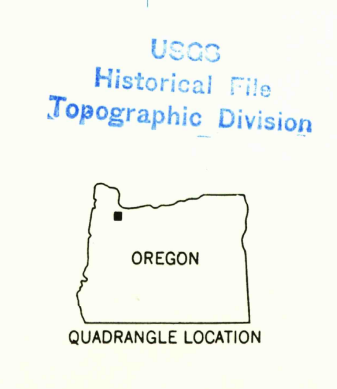
BEAVERTON QUADRANGLE
OREGON-WASHINGTON CO.
7.5 MINUTE SERIES (TOPOGRAPHIC)
NE/4 BEAVERTON 15 QUADRANGLE



Mapped, edited, and published by the Geological Survey
Control by USGS, USC&GS, and State of Oregon
Topography from aerial photographs by photogrammetric methods
Aerial photographs taken 1952. Field check 1954
Revised from aerial photographs taken 1960. Field check 1961
Polyconic projection, 1927 North American datum
10,000-foot grid based on Oregon coordinate system, north zone
1000-meter Universal Transverse Mercator grid ticks,
zone 10, shown in blue
Red tint indicates areas in which only landmark buildings are shown
Fine red dashed lines indicate selected fence lines



SCALE 1:24,000
1 000 2000 3000 4000 5000 6000 7000 FEET
1 KILOMETER
CONTOUR INTERVAL 10 FEET
DATUM IS MEAN SEA LEVEL



ROAD CLASSIFICATION
Heavy-duty Light-duty
Medium-duty Unimproved dirt
Interstate Route U.S. Route State Route

BEAVERTON, OREG.
NE/4 BEAVERTON 15 QUADRANGLE
N4522.5 - W12245.7.5

1961

THIS MAP COMPLIES WITH NATIONAL MAP ACCURACY STANDARDS
FOR SALE BY U.S. GEOLOGICAL SURVEY, DENVER 25, COLORADO OR WASHINGTON 25, D. C.
A FOLDER DESCRIBING TOPOGRAPHIC MAPS AND SYMBOLS IS AVAILABLE ON REQUEST

USGS
TOPOGRAPHIC DIVISION
FEB 12 1962
3540