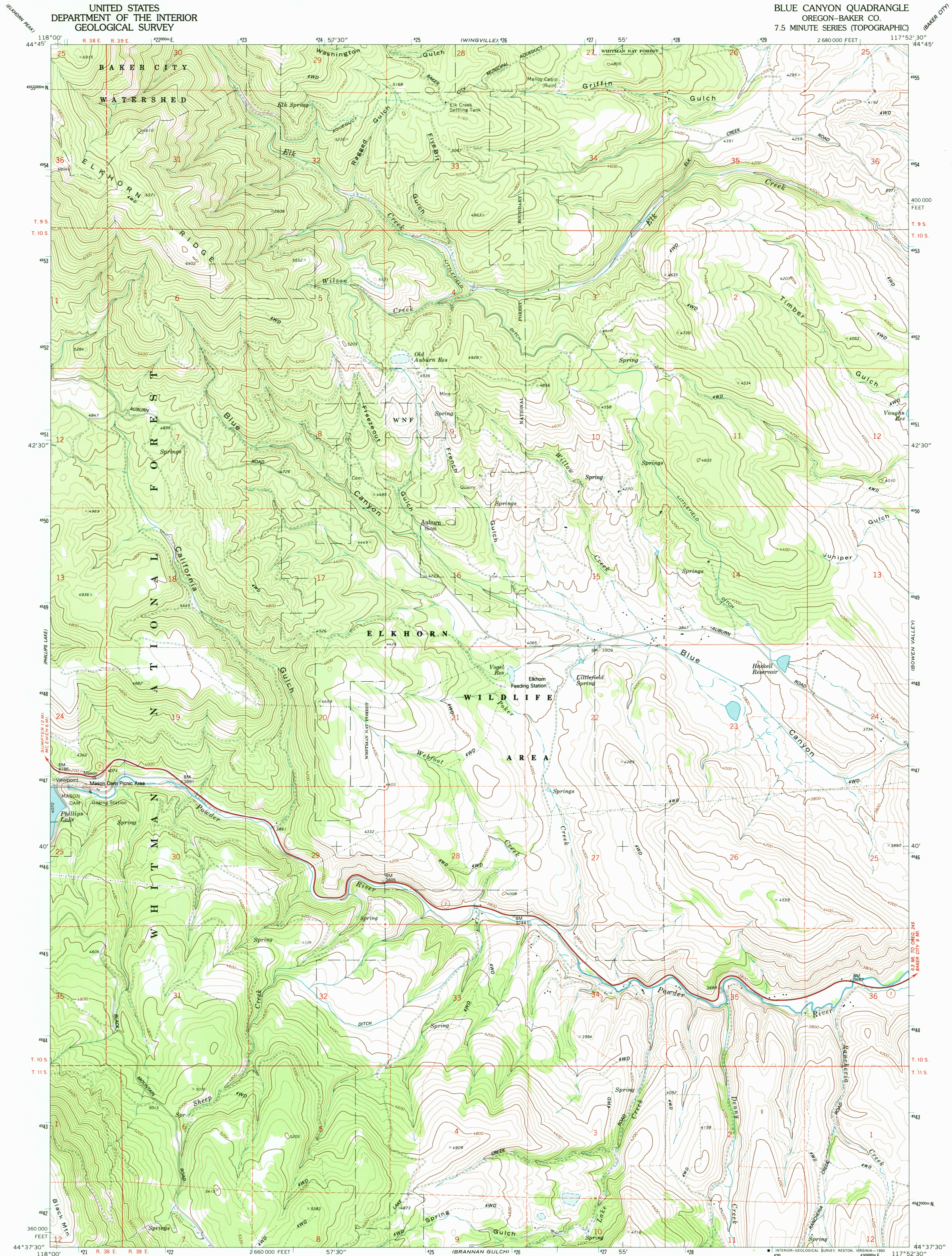
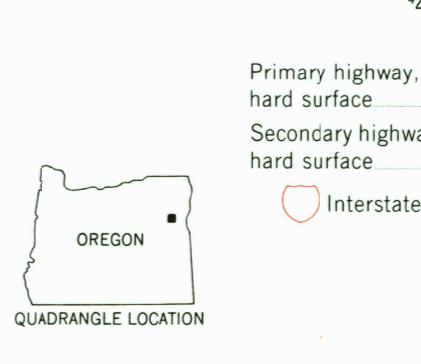
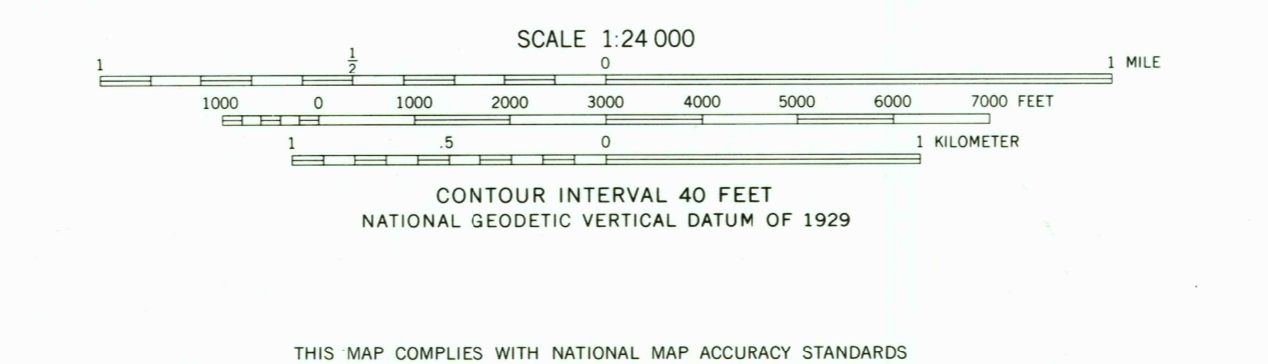
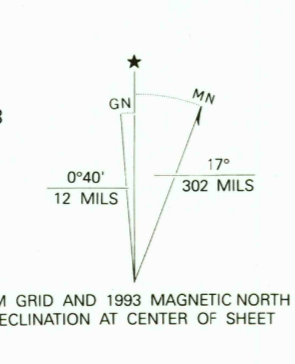


UNITED STATES
DEPARTMENT OF THE INTERIOR
GEOLOGICAL SURVEY

BLUE CANYON QUADRANGLE
OREGON-BAKER CO.
7.5 MINUTE SERIES (TOPOGRAPHIC)

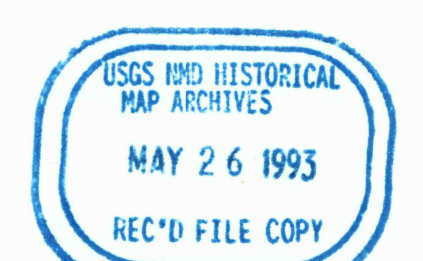


Produced by the United States Geological Survey
Control by USGS, NOS/NOAA and Oregon DOT
Compiled from aerial photographs taken 1966. Revised from aerial
photographs taken 1988-89-90. Field checked 1992. Map edited 1993
North American Datum of 1927 (NAD 27). Projection and
10,000-foot grid ticks: Oregon Coordinate System, north zone
(Lambert Conformal Conic). 1000-meter Universal Transverse
Mercator grid ticks, zone 12, shown in blue.
The difference between NAD 27 and North American Datum of
1983 (NAD 83) for 7.5 minute intersections is given in USGS
Bulletin 1875. The NAD 83 is shown by dashed corner ticks.
There may be private inholdings within the boundaries of the
National or State reservations shown on this map.



ROAD CLASSIFICATION
Primary highway, hard surface
Secondary highway, hard surface
Unimproved road
Light-duty road, hard or improved surface
Interstate Route
U. S. Route
State Route

BLUE CANYON, OREG.
44117-FB-TF-024



THIS MAP COMPLIES WITH NATIONAL MAP ACCURACY STANDARDS
FOR SALE BY U. S. GEOLOGICAL SURVEY, DENVER, COLORADO 80225, OR RESTON, VIRGINIA 22092
A FOLDER DESCRIBING TOPOGRAPHIC MAPS AND SYMBOLS IS AVAILABLE ON REQUEST

DMA 2473 III NW-SERIES V892