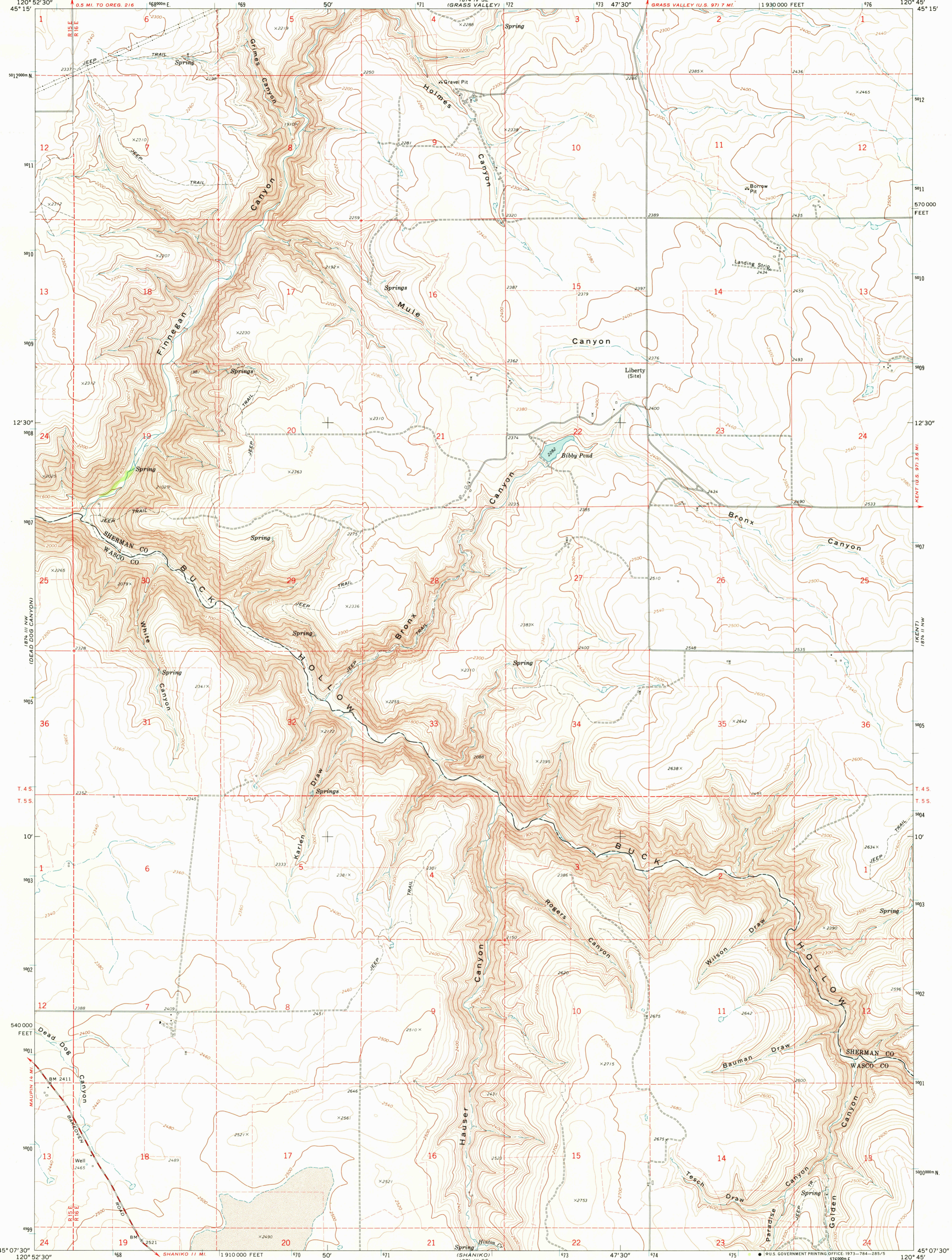
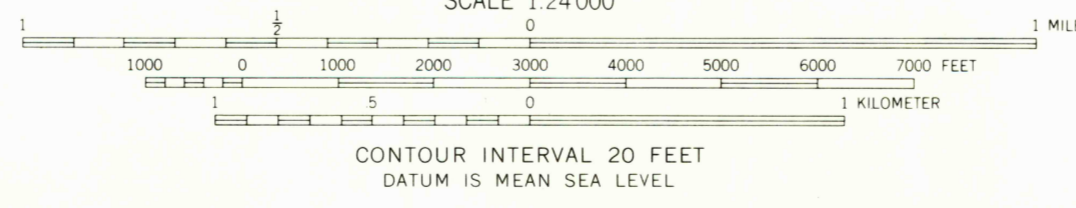
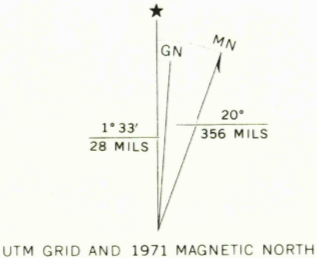


1874 IV SE
(GRASS VALLEY)

1874 I SW
(ROSEBUSH)



Mapped, edited, and published by the Geological Survey
Control by USGS and USC&GS
Topography by photogrammetric methods from aerial
photographs taken 1969. Field checked 1971.
Projection and 10,000-foot grid ticks: Oregon coordinate
system, north zone (Lambert conformal conic)
1000-meter Universal Transverse Mercator grid ticks,
zone 10, shown in blue. 1927 North American datum
Fine red dashed lines indicate selected fence lines



ROAD CLASSIFICATION

Primary highway, hard surface	Light-duty road, hard or improved surface
Secondary highway, hard surface	Unimproved road
Interstate Route	U. S. Route
	State Route

USGS
Algebraic File
Topographic Division

BRONX CANYON, OREG.
N4507.5-W12045.7.5

1971

AMS 1874 III NE—SERIES V892

OCT 30 1973

Nungen

2500

50 plane