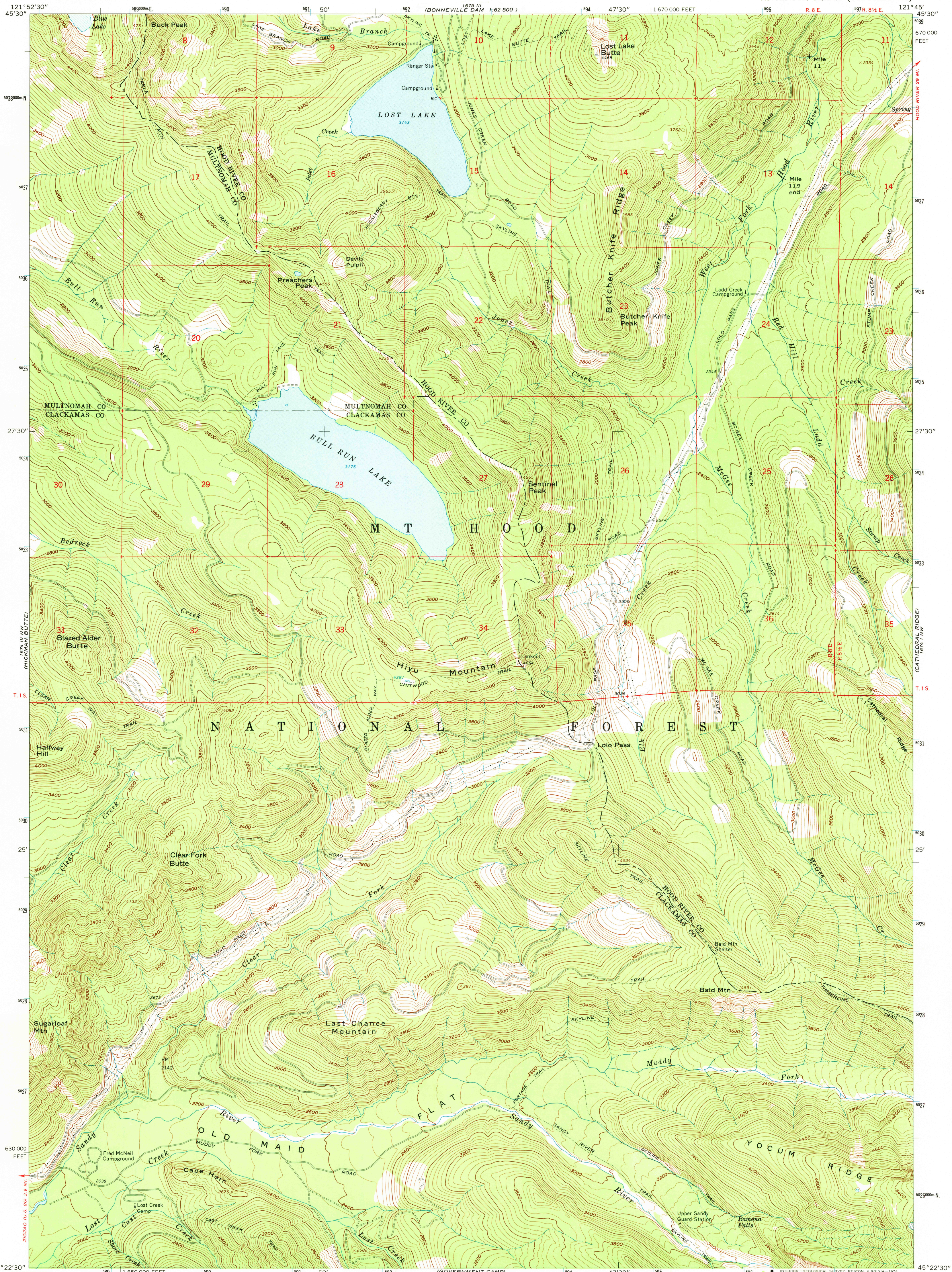
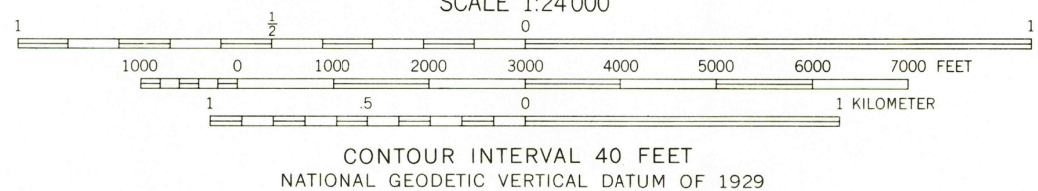
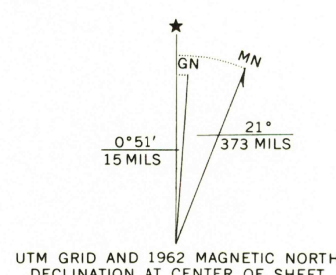


UNITED STATES  
DEPARTMENT OF THE INTERIOR  
GEOLOGICAL SURVEY

BULL RUN LAKE QUADRANGLE  
OREGON  
7.5 MINUTE SERIES (TOPOGRAPHIC)



Mapped, edited, and published by the Geological Survey  
Control by USGS and USC&GS  
Topography by photogrammetric methods from aerial  
photographs taken 1956. Field checked 1962  
Polyconic projection. 1927 North American datum  
10,000-foot grid based on Oregon coordinate system, north zone  
10,000-meter Universal Transverse Mercator grid ticks,  
zone 10, shown in blue  
Where omitted, land lines have not been established



ROAD CLASSIFICATION  
Light-duty ————— Unimproved dirt —————

BULL RUN LAKE, OREG.  
N4522.5—W12145.7.5

USGS  
Historical File  
Topographic Division  
AMS 1674 IV NE-SERIES V892

AUG 08 1974  
4370