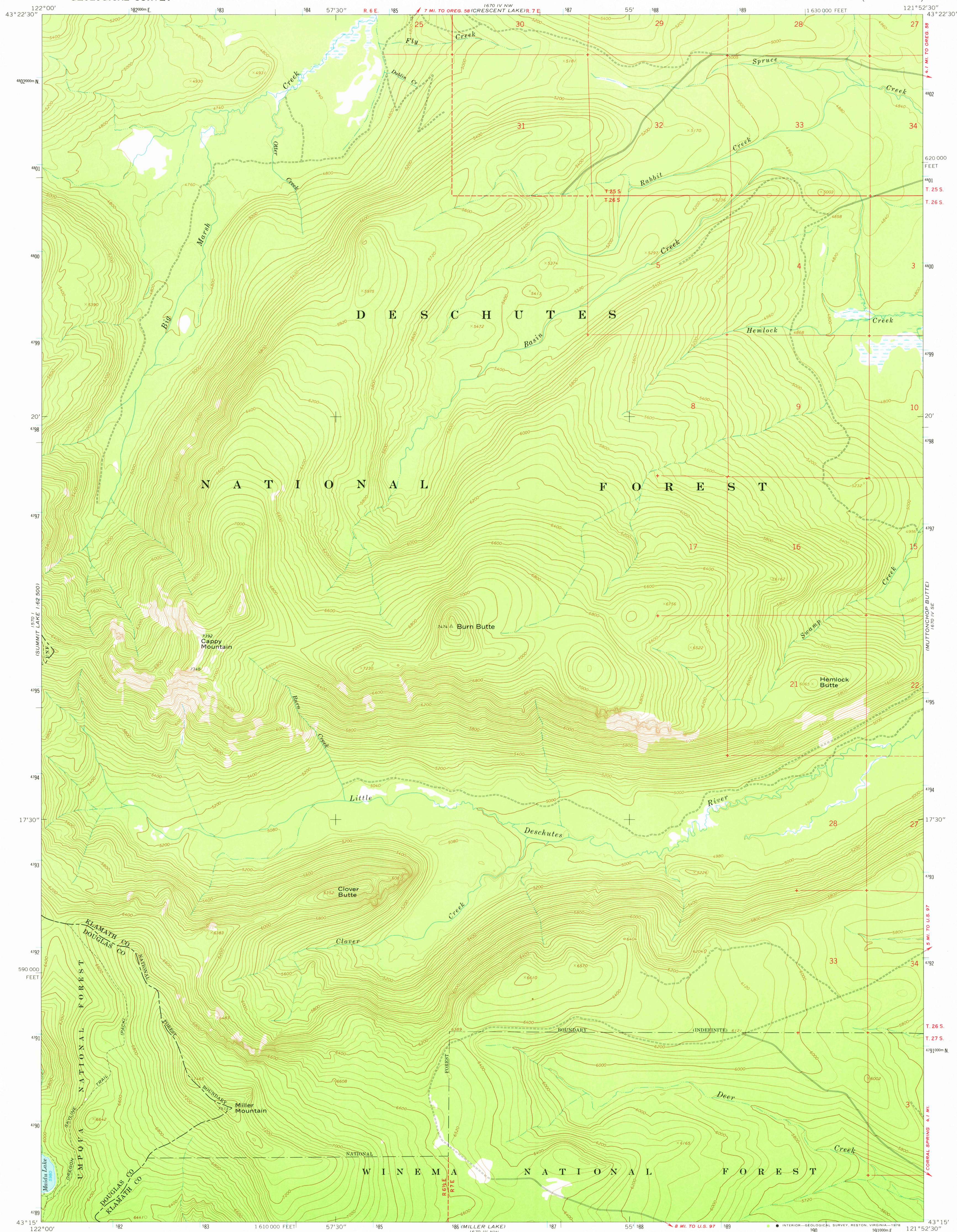
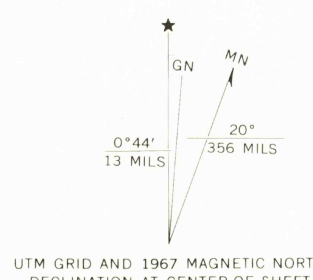


UNITED STATES  
DEPARTMENT OF THE INTERIOR  
GEOLOGICAL SURVEY

BURN BUTTE QUADRANGLE  
OREGON  
7.5 MINUTE SERIES (TOPOGRAPHIC)



Mapped, edited, and published by the Geological Survey  
Control by USGS and USC&GS  
Topography by photogrammetric methods from aerial  
photographs taken 1963. Field checked 1967  
Polyconic projection. 1927 North American datum  
10,000-foot grid based on Oregon coordinate system,  
south zone  
1000-meter Universal Transverse Mercator grid ticks,  
zone 10, shown in blue  
Where omitted, land lines have not been established  
or are not shown because of insufficient data



SCALE 1:24 000  
1 0000 0 1000 2000 3000 4000 5000 6000 7000 FEET  
1 KILOMETER  
CONTOUR INTERVAL 40 FEET  
DOTTED LINES REPRESENT 20-FOOT CONTOURS  
NATIONAL GEODETIC VERTICAL DATUM OF 1929

THIS MAP COMPLIES WITH NATIONAL MAP ACCURACY STANDARDS  
FOR SALE BY U. S. GEOLOGICAL SURVEY, DENVER, COLORADO 80225, OR RESTON, VIRGINIA 22092  
A FOLDER DESCRIBING TOPOGRAPHIC MAPS AND SYMBOLS IS AVAILABLE ON REQUEST



ROAD CLASSIFICATION  
Light-duty ———— Unimproved dirt ————  
USGS  
Historical File  
Topographic Division

BURN BUTTE, OREG.  
N4315—W12152.5/7.5

JUL 20 1978

2850

1967

AMS 1670 IV SW—SERIES V892