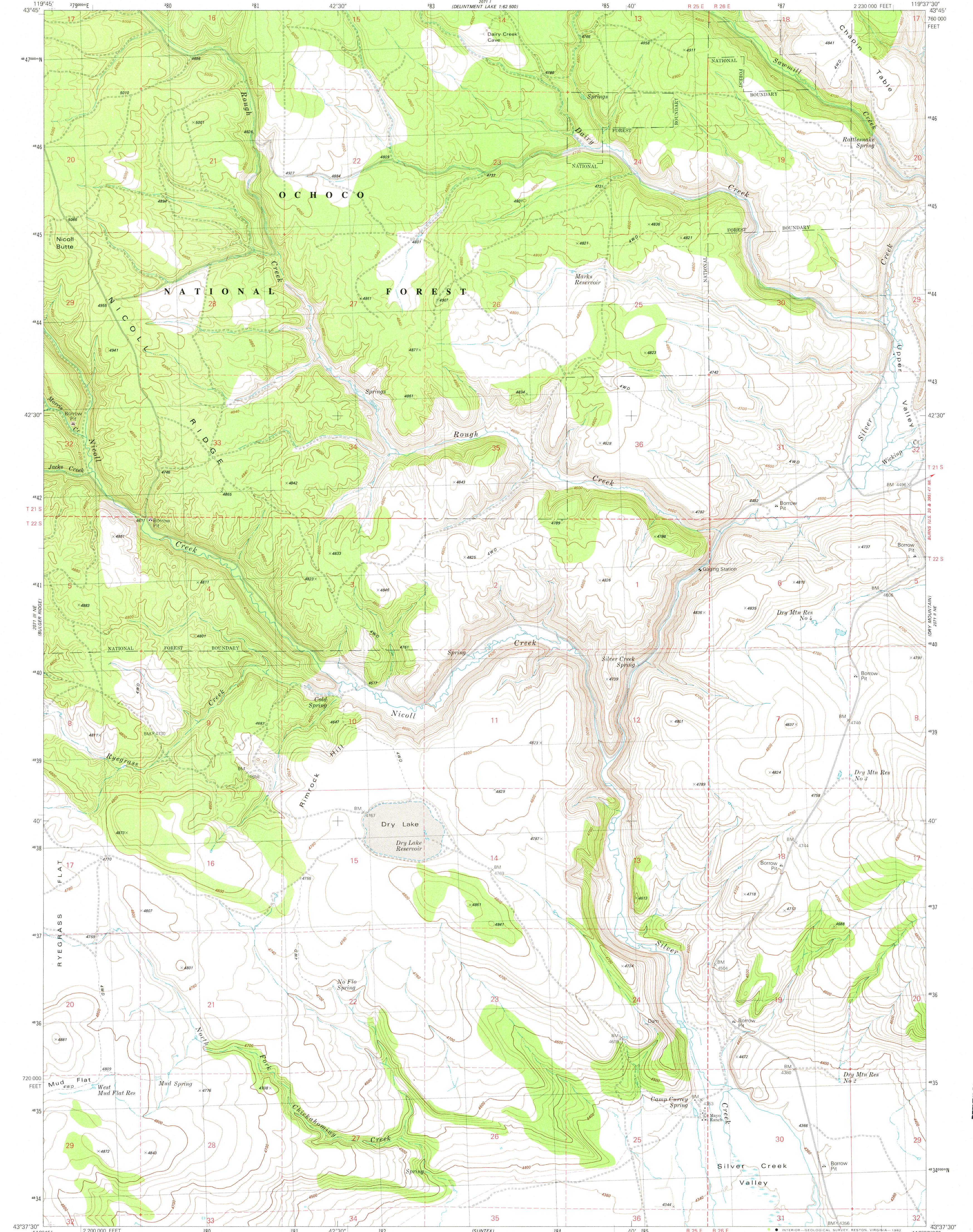


2011 N 35  
MAGNETIC BUTTE

2011 E  
DEWITT'S LAKE 1:62 500



Mapped, edited, and published by the Geological Survey  
Control by USGS and NOS/NOAA

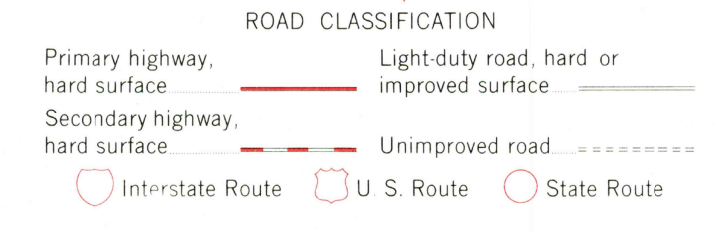
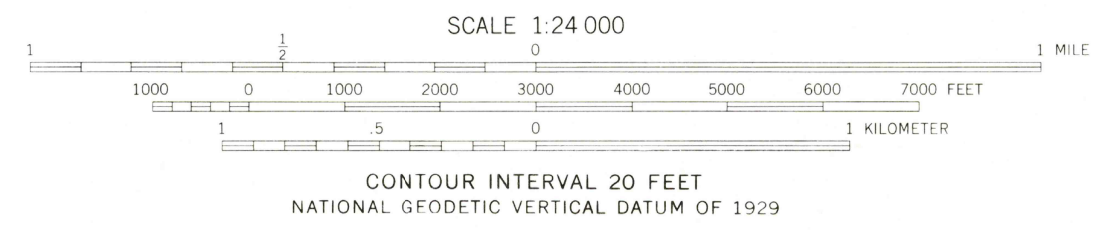
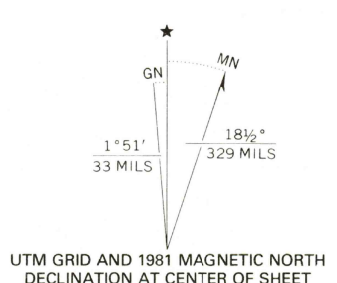
Topography by photogrammetric methods from aerial photographs  
taken 1974. Field checked 1976. Map edited 1981

Projection and 10,000-foot grid ticks: Oregon coordinate  
system, south zone (Lambert conformal conic)  
1000-meter Universal Transverse Mercator grid, zone 11  
1927 North American Datum

To place on the predicted North American Datum 1983  
move the projection lines 13 meters north and  
87 meters east as shown by dashed corner ticks

Fine red dashed lines indicate selected fence and field lines  
where generally visible on aerial photographs  
This information is unchecked

There may be private inholdings within the boundaries of  
the National or State reservations shown on this map



THIS MAP COMPLIES WITH NATIONAL MAP ACCURACY STANDARDS  
FOR SALE BY U. S. GEOLOGICAL SURVEY, DENVER, COLORADO 80225, OR RESTON, VIRGINIA 22092  
A FOLDER DESCRIBING TOPOGRAPHIC MAPS AND SYMBOLS IS AVAILABLE ON REQUEST

CAMP CURREY SPRING, OREG.  
N4337.5-W11937.5/7.5

1981  
DMA 2071 II NW—SERIES V892

RETURN TO:  
USGS AND HISTORICAL MAP ARCHIVES

APR 27 1982

2250