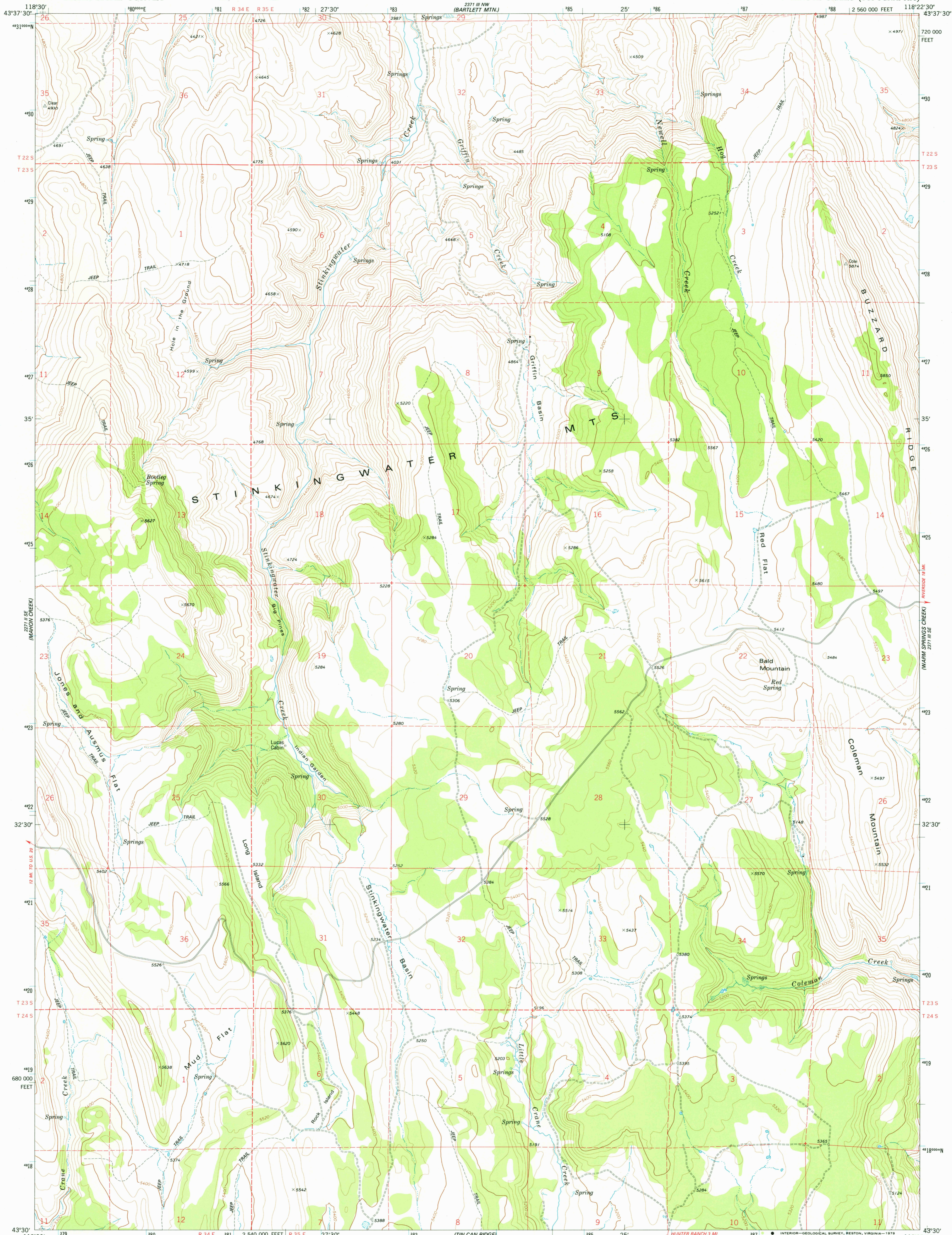
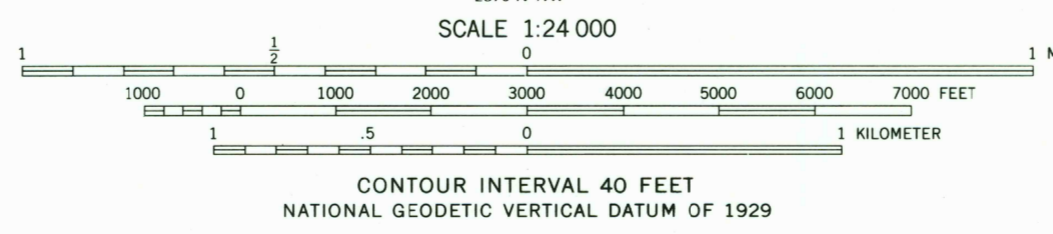
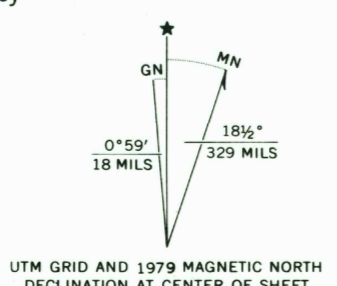




271° 15' E  
(TOPTON MTN.)



Mapped, edited, and published by the Geological Survey  
Control by USGS and NOS/NOAA  
Topography by photogrammetric methods from aerial  
photographs taken 1972. Field checked 1973. Map edited 1979  
Projection and 10,000-foot grid ticks: Oregon coordinate  
system, south zone (Lambert conformal conic)  
1000-meter Universal Transverse Mercator grid ticks,  
zone 11, shown in blue. 1927 North American datum  
To place on the predicted North American Datum 1983  
move the projection lines 17 meters north and  
83 meters east as shown by dashed corner ticks  
Fine red dashed lines indicate selected fence lines



ROAD CLASSIFICATION

Primary highway, hard surface	Light-duty road, hard or improved surface
Secondary highway, hard surface	Unimproved road
Interstate Route	U. S. Route
	State Route

THIS MAP COMPLIES WITH NATIONAL MAP ACCURACY STANDARDS  
FOR SALE BY U. S. GEOLOGICAL SURVEY, DENVER, COLORADO 80225, OR RESTON, VIRGINIA 22092  
A FOLDER DESCRIBING TOPOGRAPHIC MAPS AND SYMBOLS IS AVAILABLE ON REQUEST

USGS  
Historical File  
Topographic Division  
COLEMAN MTN. OREG.  
N4330-W11822.5/7.5  
1979  
DMA 2371 III SW—SERIES V892

SEP 18 1979

1700