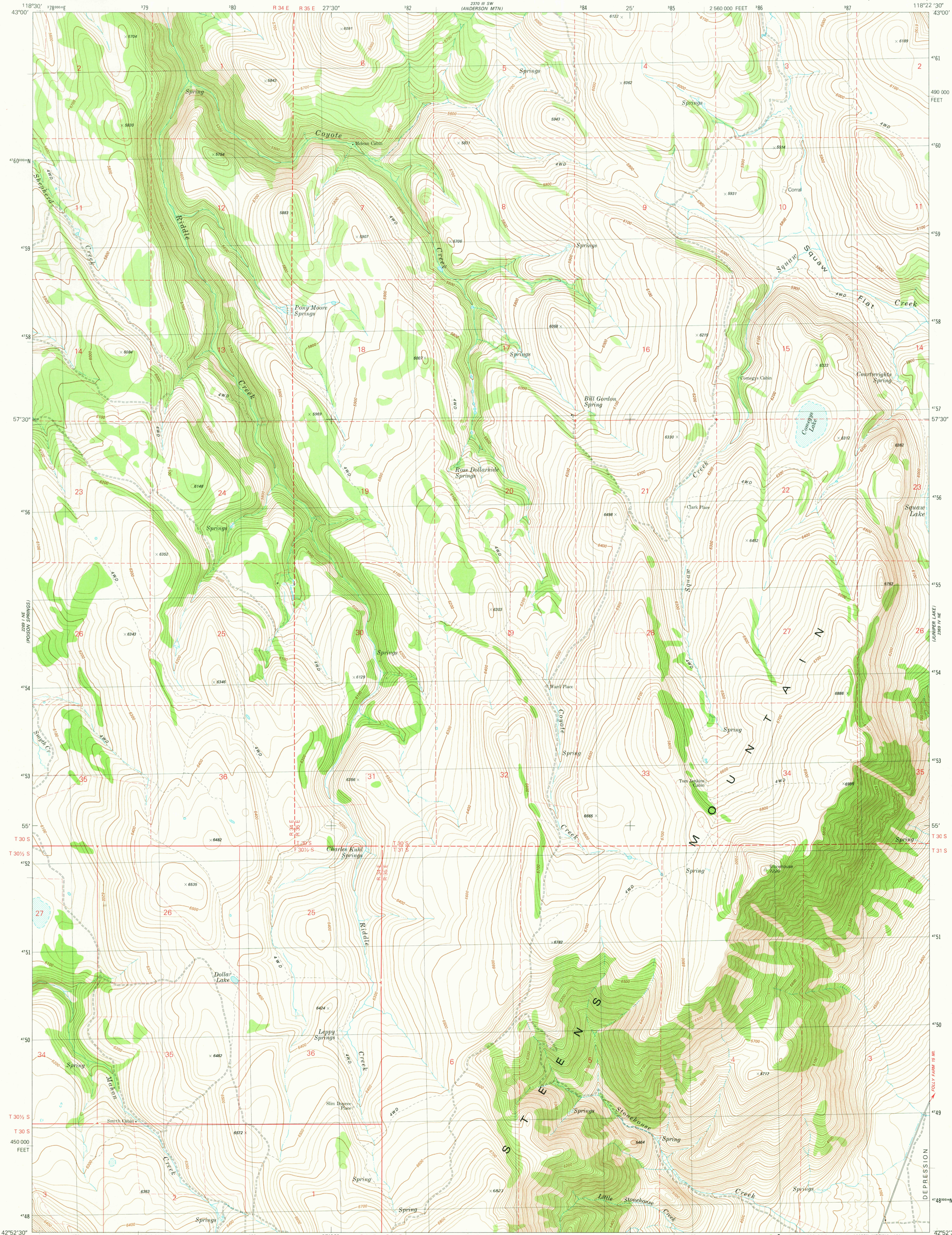
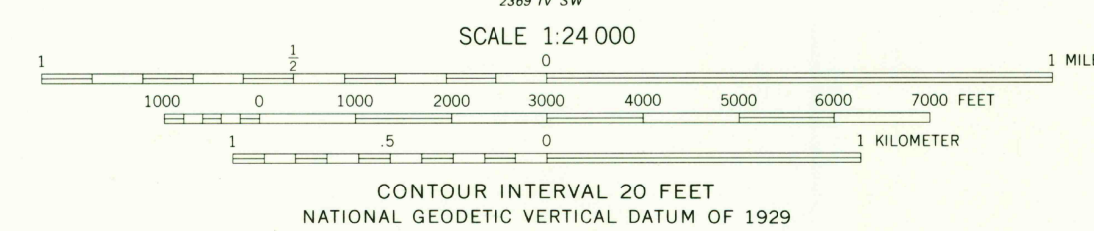
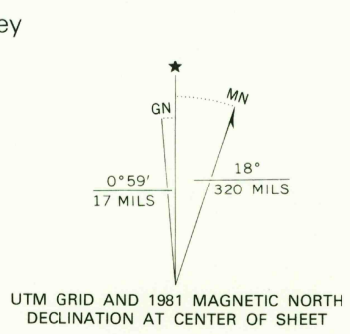


UNITED STATES
DEPARTMENT OF THE INTERIOR
GEOLOGICAL SURVEY

COMEGYS LAKE QUADRANGLE
OREGON—HARNEY
7.5 MINUTE SERIES (TOPOGRAPHIC)



Mapped, edited, and published by the Geological Survey
Control by USGS and NOS/NOAA
Topography by photogrammetric methods from aerial
photographs taken 1974. Field checked 1977
Map edited 1981
Projection and 10,000-foot grid ticks. Oregon coordinate
system, south zone (Lambert conformal conic)
1000-meter Universal Transverse Mercator grid, zone 11
1927 North American Datum
To place on the predicted North American Datum 1983
move the projection lines 17 meters north and
83 meters east as shown by dashed corner ticks
Fine red dashed lines indicate selectee fence lines
where generally visible on aerial photographs
This information is unchecked



ROAD CLASSIFICATION
Primary highway, hard surface
Secondary highway, hard surface
Light-duty road, hard or improved surface
Unimproved road
Interstate Route
U. S. Route
State Route

COMEGYS LAKE, OREG.
N4252.5-W11822.5/7.5

1981
DMA 2369 IV NW—SERIES V892

THIS MAP COMPLIES WITH NATIONAL MAP ACCURACY STANDARDS
FOR SALE BY U. S. GEOLOGICAL SURVEY, DENVER, COLORADO 80225, OR RESTON, VIRGINIA 22092
A FOLDER DESCRIBING TOPOGRAPHIC MAPS AND SYMBOLS IS AVAILABLE ON REQUEST

RETURN TO:
USGS AND HISTORICAL MAP ARCHIVES

OCT 22 1991

1050